



# Homeland Nickel

America's source of domestic nickel | APRIL 2025 | Corporate Presentation

# DISCLAIMER



**Homeland Nickel**  
America's source for domestic nickel

This presentation contains statements which constitute "forward-looking information" within the meaning of applicable securities laws, including statements regarding the plans, intentions, beliefs and current expectations of Homeland Nickel Corporation ("Homeland" or the "Company") with respect to future business activities and operating performance. Forward-looking information is often identified by the words "may", "would", "could", "should", "will", "intend", "plan", "anticipate", "believe", "estimate", "expect" or similar expressions and include information regarding: (i) the amount of future production over any period; (ii) assumptions relating to revenues, operating cash flow and other revenue metrics set out in the Company's disclosure materials; and (iii) future exploration and development plans.

Investors are cautioned that forward-looking information is not based on historical facts but instead reflect management's expectations, estimates or projections concerning future results or events based on the opinions, assumptions and estimates of management considered reasonable at the date the statements are made. Although Homeland believes that the expectations reflected in such forward-looking information are reasonable, such information involves risks and uncertainties, and undue reliance should not be placed on such information, as unknown or unpredictable factors could have material adverse effects on future results, performance or achievements of the Company. Among the key factors that could cause actual results to differ materially from those projected in the forward looking information are the following: the requirement for additional funding for development and exploration; the fluctuating price of nickel and other metals; success of exploration, development and operations activities; health, safety and environmental risks and hazards; uncertainty in the estimation of mineral reserves and mineral resources; replacement of depleted mineral reserves; the potential of production and cost overruns; obligations as a public company; risks relating to government and taxation regulation; volatility in the market price of the Company's securities; risks relating to property access and exploration permitting; risks relating to the construction and development of new mines; risks relating to the dependence of the Company on outside parties and key management personnel; and risks in the event of a potential conflict of interest.

## ABOUT



**Homeland Nickel**

America's source for domestic nickel

Canadian-based mineral exploration company with a focus on nickel in Oregon

Main asset is Cleopatra, a nickel laterite resource with 39.5 Mt @ 0.93% Ni

We have an 98.5% interest in Cleopatra with a path to 100%

Copper-gold joint-venture with Benton Resources in Newfoundland, Canada

~ \$4.9 million CAD in cash and securities (as of MAR 20, 2025)

Market capitalization is ~ \$14 million CAD

# CAPITAL STRUCTURE



**Homeland Nickel**  
America's source for domestic nickel

**TSXV: SHL**  
**OTCQB: SGRCF**

Exchange	Toronto Venture
Common shares outstanding	221,146,802
Warrants	15,000,000
Stock options	18,250,000
RSU's	2,350,000
Total	256,746,802

April, 2025



## CASH & SECURITIES



**Homeland Nickel**  
America's source for domestic nickel

Name	Symbol	Shares Owned	Market Price	Market Value
Canada Nickel	CNC	2,635,295	0.95	\$2,503,000
Noble Mineral	NOB	9,960,000	0.045	\$448,200
Benton Resources	BEX	12,761,500	0.07	\$893,000
Magna Terra	MTT	2,761,312	0.55	\$152,000
			securities	\$3,996,200
			cash	\$200,000

APR-10-2025

# THE TEAM



**Homeland Nickel**  
America's source for domestic nickel

---

## Officers

Stephen Balch, P.Geo. – President and CEO  
VP Exploration for Canada Nickel Company Inc.

Ashley Nadon, CPA, MBA – Chief Financial Officer  
Public company consultant and accounting services provider

Errol Farr, CPA, CMA – Corporate Secretary  
Public company CFO and CEO, currently CFO of 3 other public company's

## Directors

Vance White – President and CEO of Noble Mineral Exploration Inc.

Stephen Balch – President and CEO of Homeland Nickel Corp.

Michael Dehn – President and CEO of Temas Resources Corp.

Birks Bovaird – Chair of the board of Energy Fuels Inc.

# NORTH AMERICAN BATTERY FACTORIES



**Homeland Nickel**  
America's source for domestic nickel



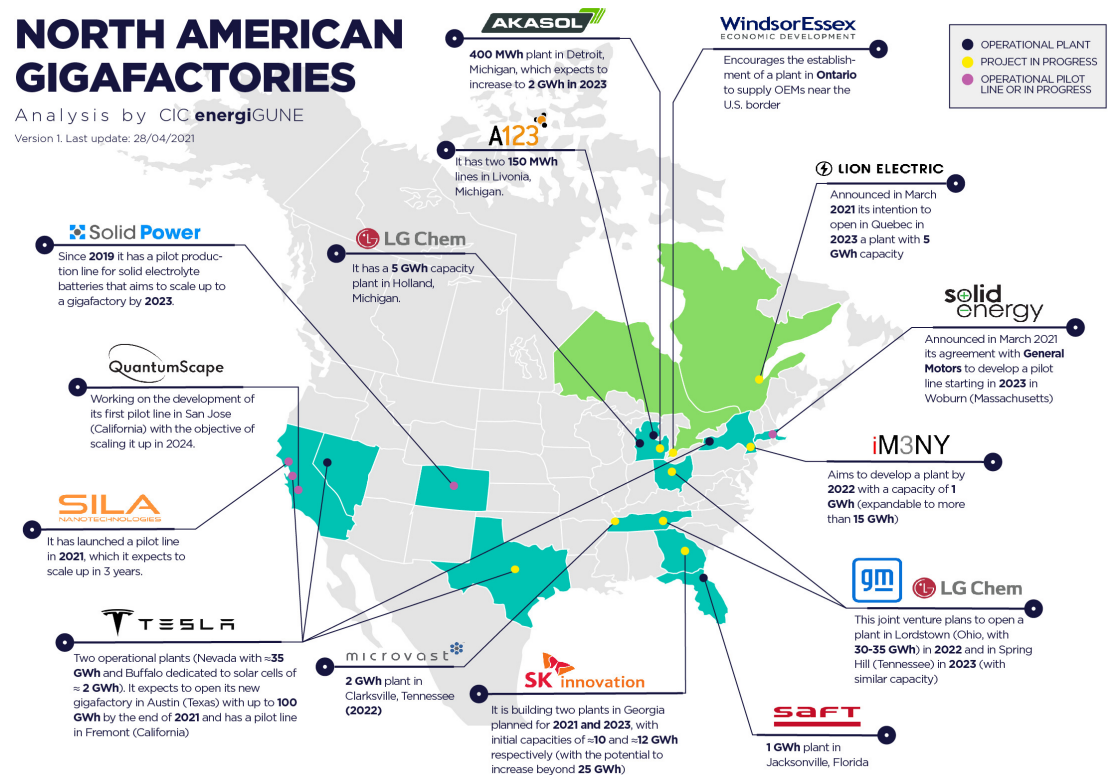
Tesla, Nevada (35 GWh)

Is there a source of domestic nickel?

## NORTH AMERICAN GIGAFACTORIES

Analysis by CIC energiGUNE

Version 1. Last update: 28/04/2021

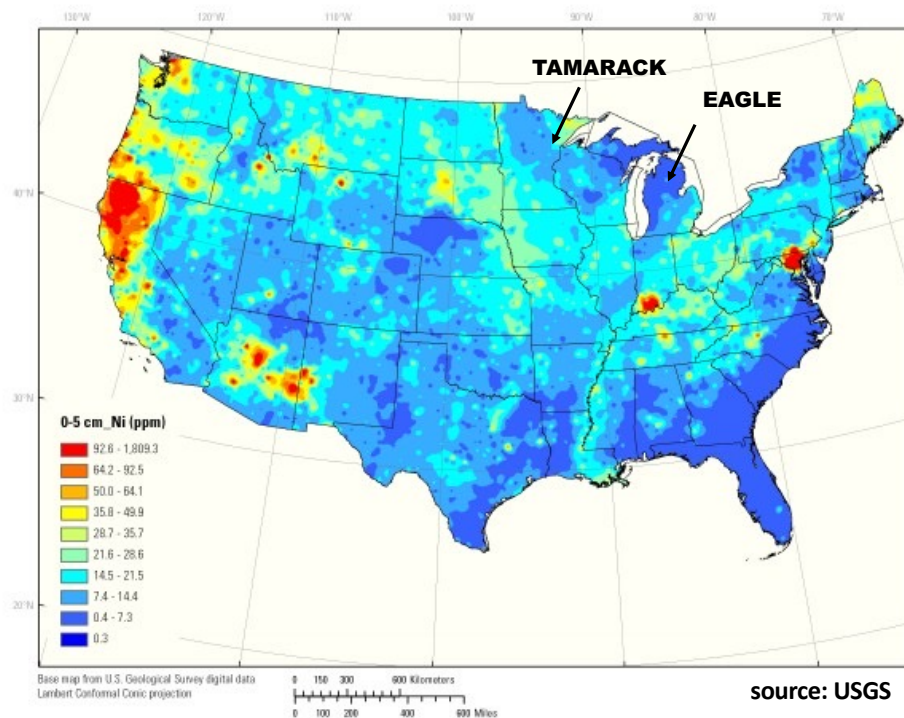


# SURFACE NICKEL IN THE USA



**Homeland Nickel**  
America's source for domestic nickel

## Surface Nickel



## Nickel Mining in America

### Eagle Mine, Michigan

- ☐ Underground nickel sulphide
- ☐ 5.16 Mt @ 3.1% Ni, 2.6% Cu
- ☐ 440 million pounds contained Ni
- ☐ In production
- ☐ Closure estimated 2027

### Tamarack Deposit, Minnesota

- ☐ Underground, nickel sulphide
- ☐ 17.03 Mt @ 1.28% Ni
- ☐ 480 million pounds contained Ni
- ☐ 8 separate deposits
- ☐ Not yet in production
- ☐ Facing water permit issues

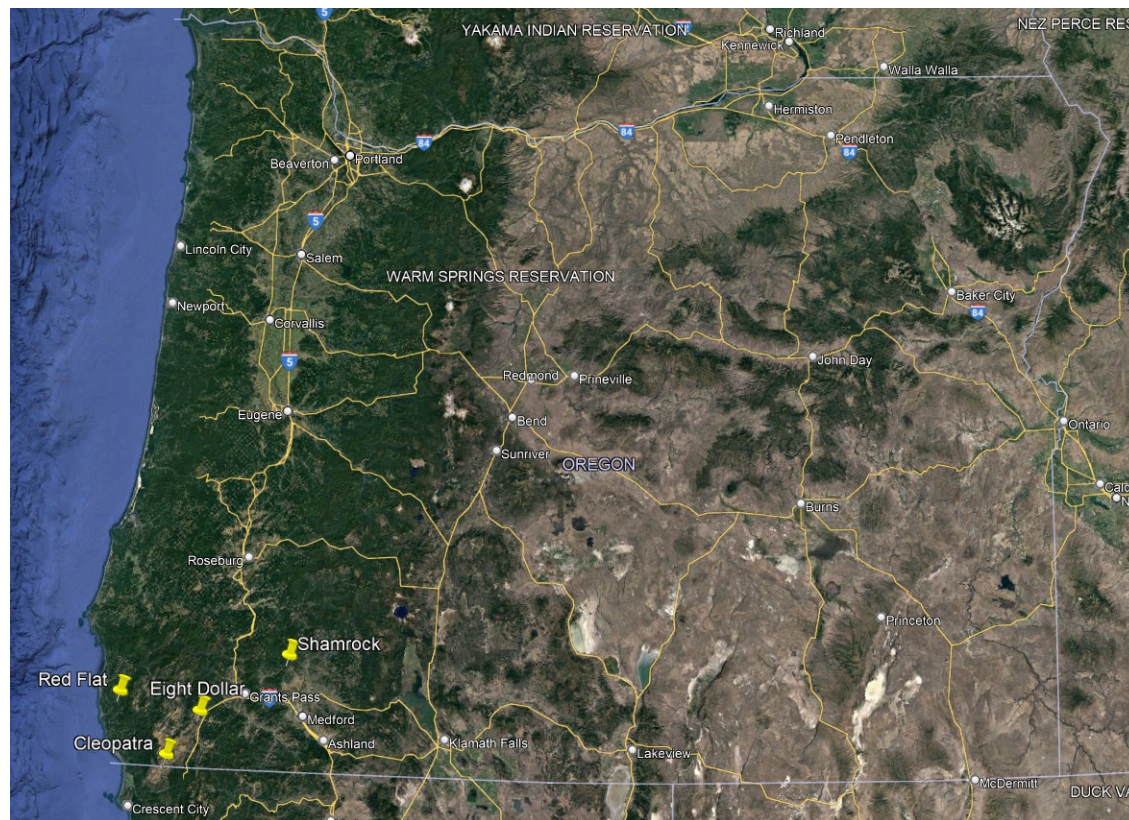
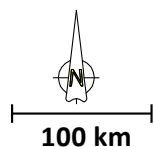
# OREGON NICKEL PROPERTIES



**Homeland Nickel**  
America's source for domestic nickel

All projects are in southwest Oregon, close to infrastructure, with known nickel occurrences

Name	County	Type
Cleopatra	Curry	Nickel Laterite
Red Flat	Curry	Nickel Laterite
Eight Dollar	Josephine	Nickel Laterite
Shamrock	Jackson	Nickel Sulphide

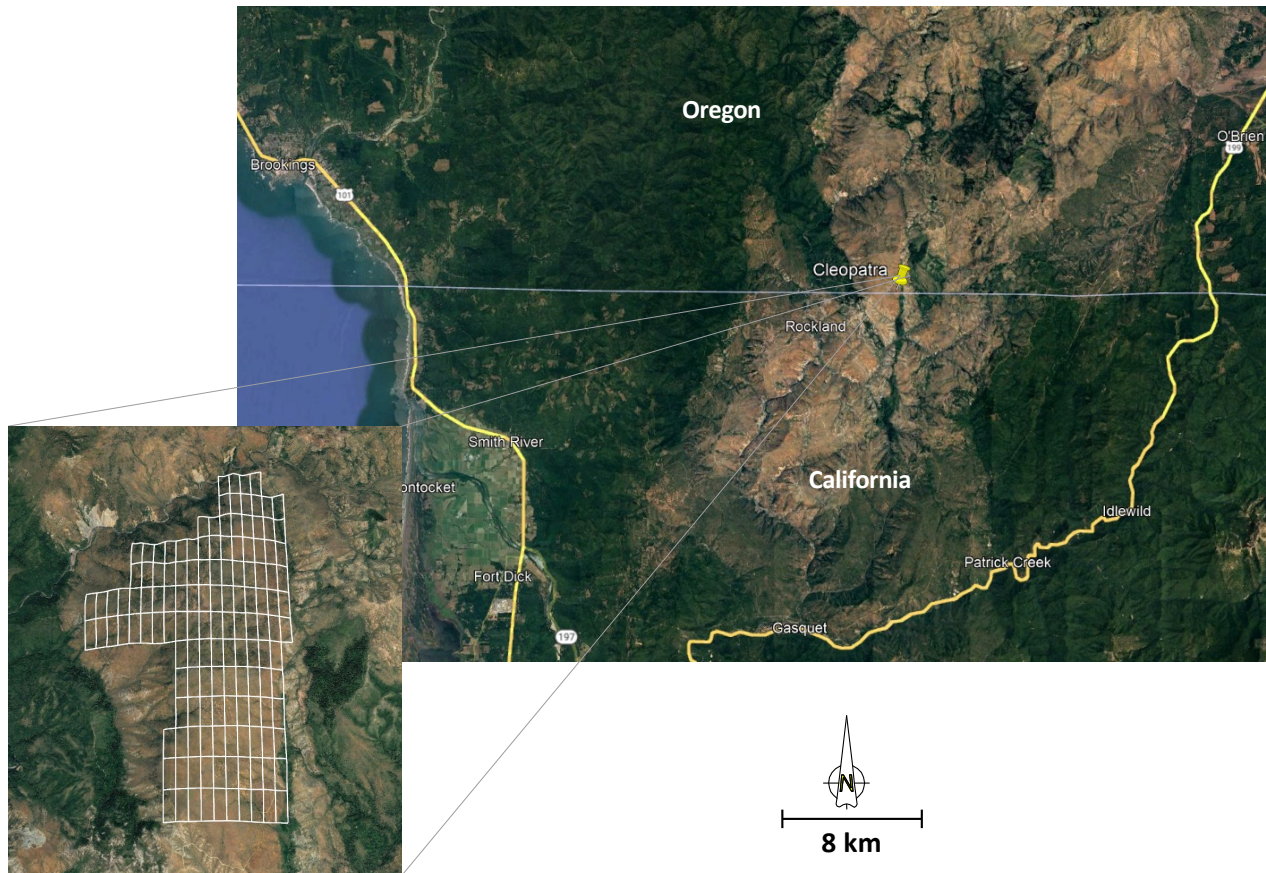




# CLEOPATRA : NICKEL RESOURCE



**Homeland Nickel**  
America's source for domestic nickel



## LOCATION:

- ❑ Southwest Oregon, bordering California
- ❑ Curry County
- ❑ 15 km west of Hwy 199
- ❑ Direct access by Road 450

## SIZE:

- ❑ 2,872 acres, ~2.5 km by 6.0 km
- ❑ 139 mining claims
- ❑ 1 claim ~ 600' x 1,500' or 20.66 acres

## ADMINISTRATION:

- ❑ Department of Geology (DOGAMI)
- ❑ Bureau of Land Management
- ❑ Forest Service

# CLEOPATRA : 800 M POUNDS OF NICKEL



**Homeland Nickel**  
America's source for domestic nickel

## Nickel Laterite

- ☐ Formed by prolonged weathering of ultramafic rocks (0.2-0.4% Ni)
- ☐ Confined to the upper 20-30 meters
- ☐ Combination of Ni-soil and Ni-rock (~0.8-1.4% Ni)
- ☐ Ni grade tends to increase with depth

## History

- ☐ Nickel laterites discovered in Oregon in 1881, resampled in 1979
- ☐ Additional sampling and auger drilling from 2007 – 2009
- ☐ Average sampling depth less than 12 feet
- ☐ NI 43-101 resource was completed in 2009 but never published
- ☐ Nearby Riddle Mine, America's largest, operated from 1954-1983

## Resources\*

- ☐ Divided based on soil or rock
- ☐ Measured : 5.255 Mt @0.98% Ni
- ☐ Indicated : 14.548 Mt @0.92% Ni
- ☐ Inferred : 19.671 Mt @0.92% Ni
- ☐ Total : 39.5 Mt @0.93% Ni (800 million pounds of Ni)

\* 0.7% Ni cut-off



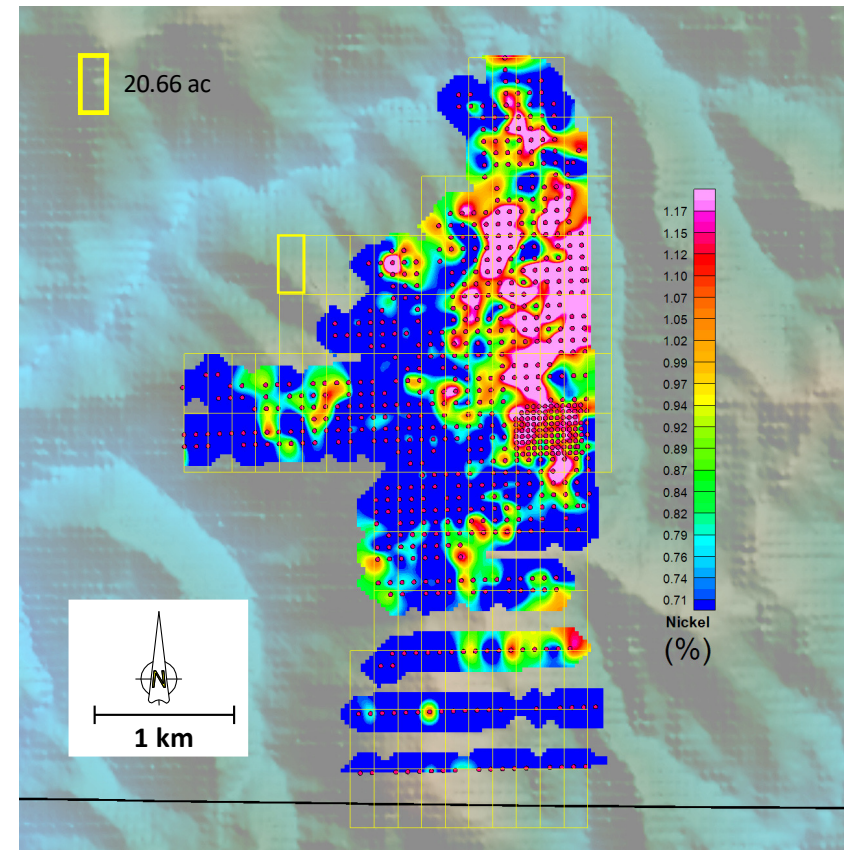


# CLEOPATRA : AVERAGE NICKEL GRADE



**Homeland Nickel**  
America's source for domestic nickel

- ❑ Almost all claims have  $>0.7\%$  Ni
- ❑ 46 claims (949 ac) average  $1.12\%$  Ni
- ❑ 949 ac is equivalent to 10 Mt per vertical meter
- ❑ Average depth of exploration is 8-12 feet
- ❑ Maximum depth of exploration is 23.5 feet
- ❑ Upcoming exploration will test to 50 feet (15 m)
- ❑ Current resource is 39.5 Mt



# CLEOPATRA : PROPERTY ACCESS



**Homeland Nickel**  
America's source for domestic nickel

- ❑ Almost entirely burned out a decade ago
- ❑ Access to the edge of the property via truck & trailer
- ❑ Most of the property is boulder covered
- ❑ Would require trail construction and road upgrading
- ❑ Trails require an exploration permit (DOGAMI – 6 months)

Photo: Forest Service members visit Cleopatra with Homeland, 2024



# RED FLAT : NICKEL RESOURCE



**Homeland Nickel**  
America's source for domestic nickel



## LOCATION:

- ☐ Southwest Oregon, near Gold Beach
- ☐ Curry County
- ☐ 10 km east of Hwy 101
- ☐ Access by Road 635

## SIZE:

- ☐ 1,820 acres, ~2.0 km by 5.0 km
- ☐ 84 mining claims
- ☐ 1 claim = 20.66 acres

## ADMINISTRATION:

- ☐ Department of Geology (DOGAMI)
- ☐ Bureau of Land Management
- ☐ Forest Service



# RED FLAT : NICKEL AT SURFACE



**Homeland Nickel**  
America's source for domestic nickel

## Nickel Laterite

- ☐ Weathered and upgraded ultramafic (from 0.3 to 1% Ni)
- ☐ Red Flat was explored to a maximum depth of 60' (18 m)
- ☐ Average exploration depth is 12 feet

## History

- ☐ Discovered in 1939
- ☐ Reconnaissance mapping and sampling in 1947
- ☐ Extensive drilling, trenching, sampling in 1954
- ☐ Drilling and complete mapping in 1978
- ☐ Additional sampling and auger drilling from 2007 – 2009
- ☐ NI 43-101 resource in 2009 but never published
- ☐ Average sampling depth was less than 30' (10 m)

## Resources\*

- ☐ Divided based on soil or rock
- ☐ Measured : 3.987 Mt @0.99% Ni
- ☐ Indicated : 6.436 Mt @0.81% Ni
- ☐ Inferred : 8.338 Mt @0.80% Ni
- ☐ Total : 18.8 Mt @0.84% Ni (347 million pounds of Ni)

\* 0.7% Ni cut-off



# RED FLAT : SURFACE TRENCHES



**Homeland Nickel**  
America's source for domestic nickel

## Trenched by the USGS

- ☐ Several trenches dug to 15 feet depth, cutting 1.0%+ Ni
- ☐ Trenching by USGS in the 1950s
- ☐ Trenches up to hundreds of metres long by 20-30 metres across
- ☐ Entire property is road accessible
- ☐ Resource defined in 2007-2009
- ☐ Sampled by Homeland in 2024
- ☐ Drilling and bulk sample planned for April 2025

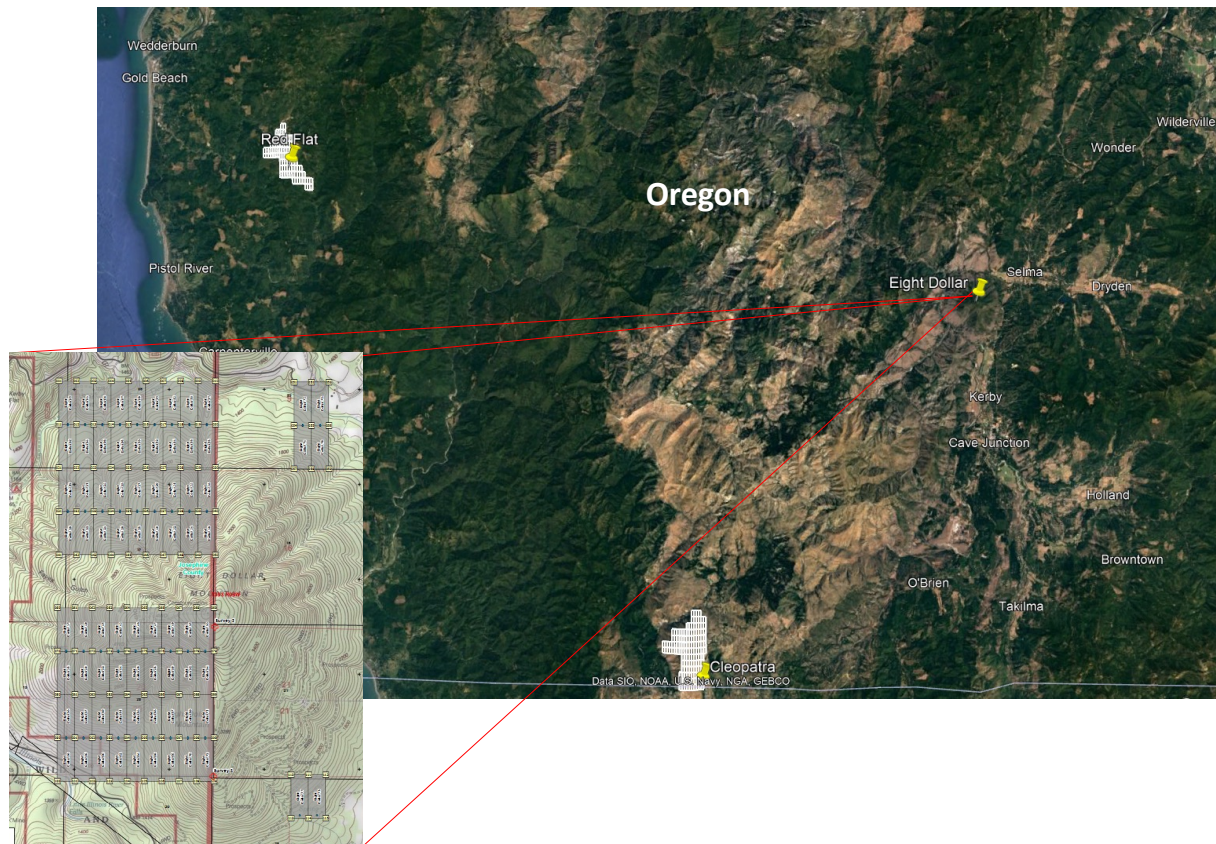




# EIGHT DOLLAR PROPERTY



**Homeland Nickel**  
America's source for domestic nickel



## LOCATION:

- ☐ Southwest Oregon, near Selma
- ☐ Josephine County
- ☐ 10 km east of Hwy 199
- ☐ Contains local trails and access routes

## SIZE:

- ☐ 1,611 acres, ~2.0 km by 5.0 km
- ☐ 78 mining claims
- ☐ 1 claim = 20.66 acres

## ADMINISTRATION:

- ☐ DOGAMI (exploration & mining)
- ☐ Bureau of Land Management (claims)
- ☐ Forestry Service (land access)

# EIGHT DOLLAR PROPERTY



**Homeland Nickel**  
America's source for domestic nickel

## Nickel Laterite

- ☐ Weathered peridotite
- ☐ Underlain by fresh peridotite (CO2 sequestering?)
- ☐ Very large area
- ☐ Excellent access

## History

- ☐ Explored by Freeport in 1942
- ☐ Discovery pits and shallow shifts dug
- ☐ Minor resource of 9 Mt @ 0.56% Ni identified
- ☐ Also found to contain chromium and cobalt
- ☐ Not much work since 1976

## Resources\*

- ☐ 9 Mt nickel @ 0.56 % (not on our claims)
- ☐ Chromium oxide @ 0.93%
- ☐ Cobalt @ 0.04%

\* Unclassified as of 1975





# SHAMROCK PROPERTY



**Homeland Nickel**  
America's source for domestic nickel



## LOCATION:

- ☐ Southwest Oregon
- ☐ Jackson County
- ☐ 30 km north of Medford
- ☐ Intersected by Road 635

## SIZE:

- ☐ 758 acres, ~2.1 km by 2.7 km
- ☐ 40 mining claims

## ADMINISTRATION:

- ☐ DOGAMI (exploration & mining)
- ☐ Bureau of Land Management (claims)
- ☐ Forest Service (land access)

# SHAMROCK PROPERTY



**Homeland Nickel**  
America's source for domestic nickel

- ☐ Nickel sulphide
- ☐ Ni, Cu, Pt, Co
- ☐ Limited drilling
- ☐ Direct road access
- ☐ Some underground workings
- ☐ Owned by Freeport McMoran
- ☐ Bulk sample 1.1% Cu, 1.3% Ni

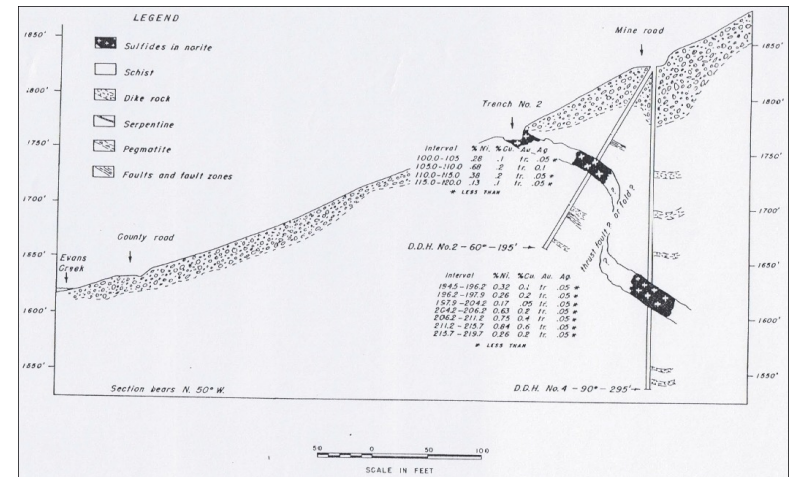
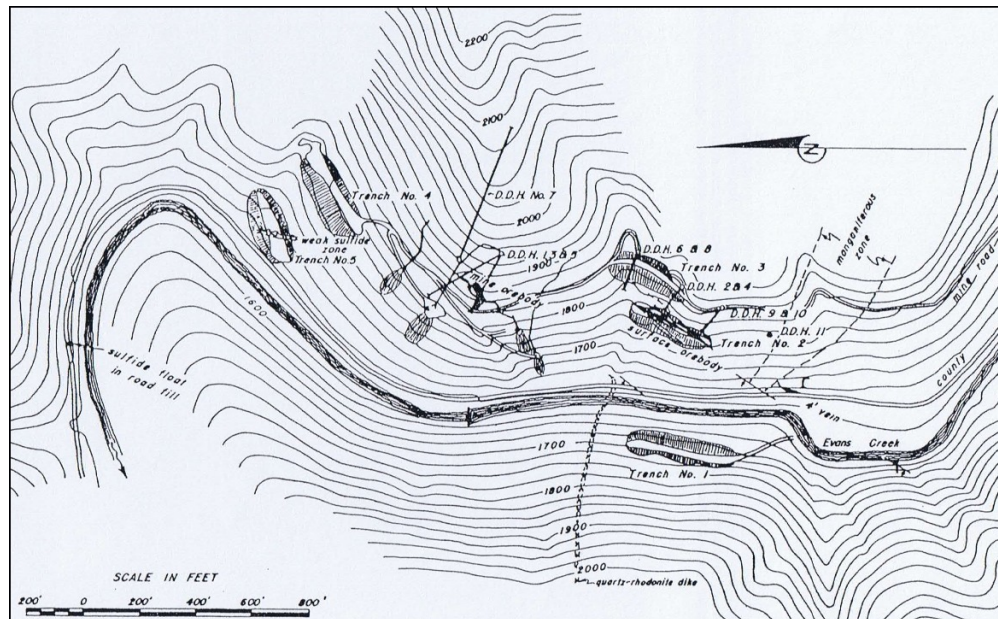




# SHAMROCK : PREVIOUS DRILLING



**Homeland Nickel**  
America's source for domestic nickel



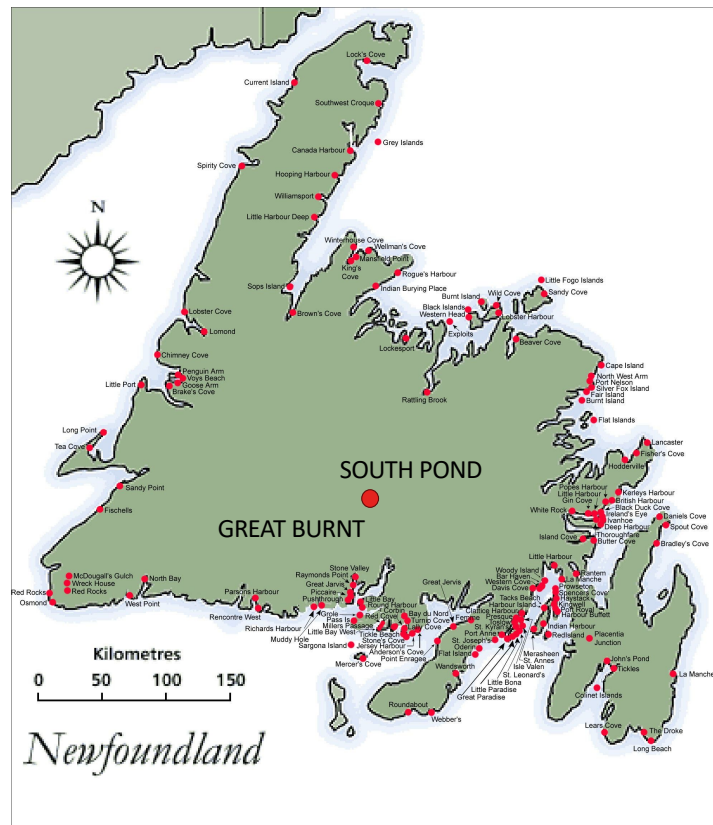
- ☐ 11 drillholes, several trenches (top left)
- ☐ Mineralization is faulted (top right)
- ☐ Typical mineralization taken near main adit – S68491
- ☐ S68491 assayed 1.19% Ni, 1.97% Cu, 3.40 g/t TPM



# COPPER AND GOLD : NEWFOUNDLAND



**Homeland Nickel**  
America's source for domestic nickel



## Great Burnt : High-grade copper

- Road access
- Exploration camp
- Copper resource
- Open down plunge

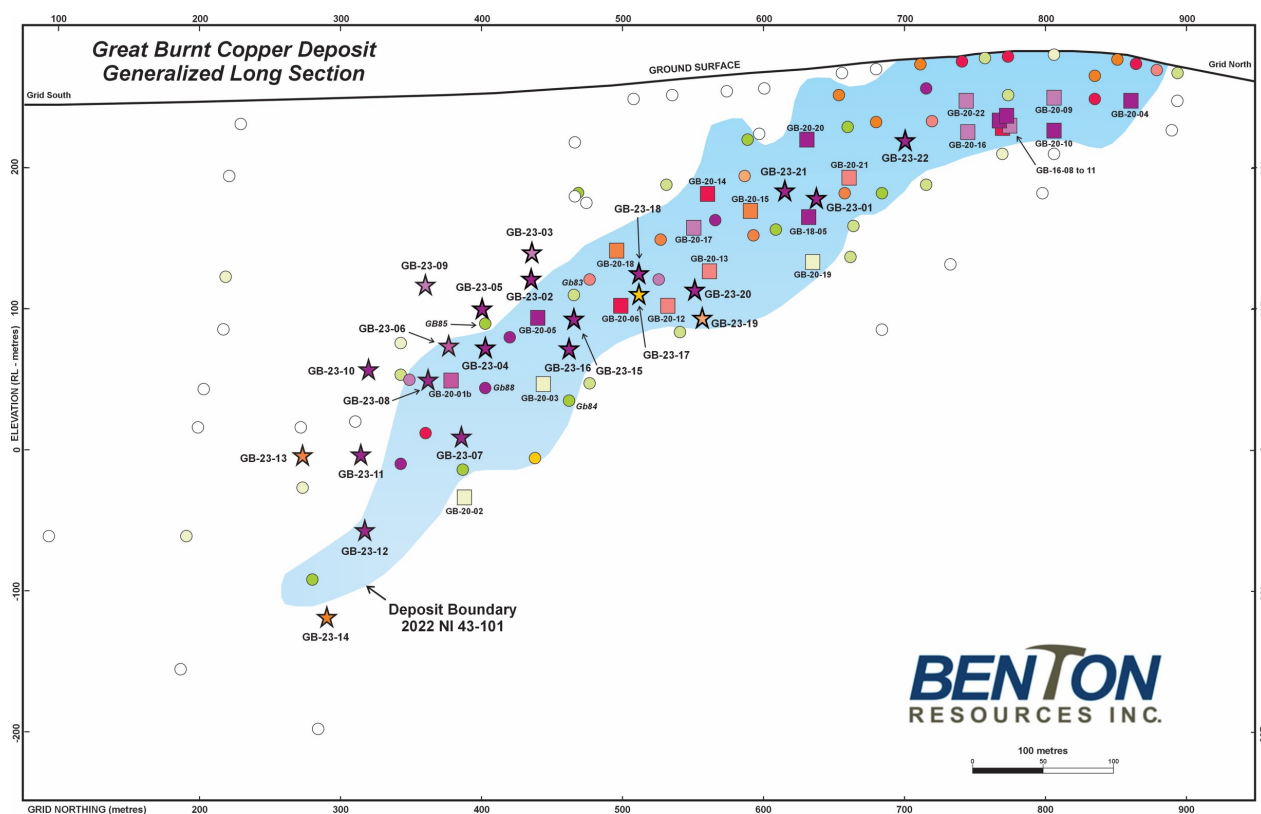
## South Pond : Low-grade gold

- Road access
- Linked to Great Burnt by trail
- Gold intersections over 50 m
- Shallow mineralization

# GREAT BURNT COPPER : NEWFOUNDLAND



**Homeland Nickel**  
America's source for domestic nickel



- ☐ High-grade copper
- ☐ JV with Benton Resources
- ☐ Homeland has 30% interest
- ☐ Existing resource
- ☐ Outcrops
- ☐ Open at depth down-plunge

## Selected results

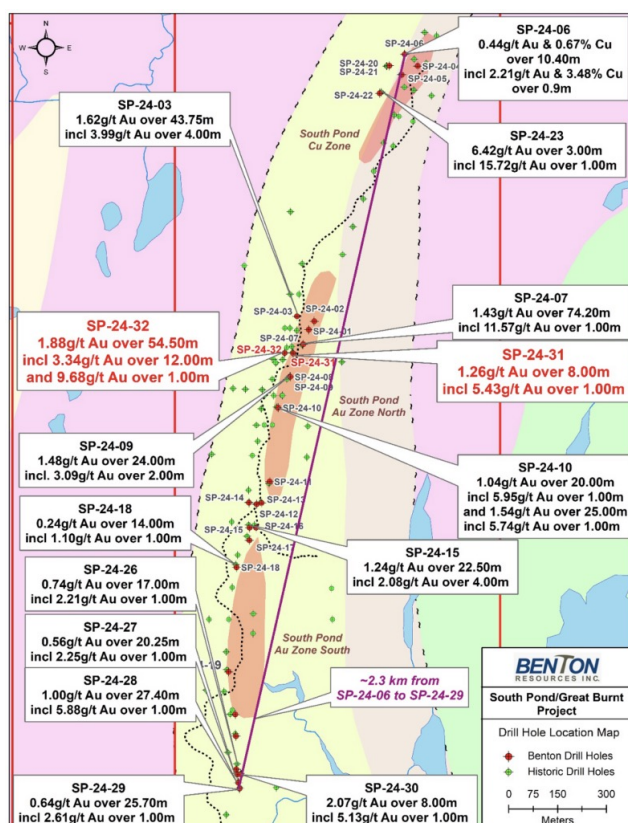
Drillhole	Interval (m)	Cu grade (%)
GB20-05	27.20	8.06
GB20-20	22.75	6.89
GB18-05	20.94	6.21
GB23-02	13.00	8.31
GB23-04	26.87	7.18
GB24-49	22.00	7.47

# SOUTH POND GOLD : NEWFOUNDLAND



**Homeland Nickel**

America's source for domestic nickel



- ☐ Gold and copper
- ☐ Homeland has 30% interest
- ☐ JV with Benton Resources
- ☐ Outcrops
- ☐ Over 2 km of drillhole intersections
- ☐ Open at depth and along strike

## Selected results

Drillhole	Interval (m)	Au grade (g/t)
SP-24-32	54.50	1.88
SP-23-31	8.00	1.26
SP-24-07	74.20	1.43
SP-24-15	22.50	1.24
SP-24-09	24.00	1.48

## CONTACT US



**Homeland Nickel**  
America's source for domestic nickel

---

*110 Yonge Street, Suite 1601  
Toronto, Ontario  
M5C1T4*

*Stephen Balch – [steve@homelandnickel.com](mailto:steve@homelandnickel.com)  
(905) 407-9586*

*Errol Farr – [errol@homelandnickel.com](mailto:errol@homelandnickel.com)  
(647) 296-1270*

**TSXV: SHL  
OTCQB: SGRCF**

[www.homelandnickel.com](http://www.homelandnickel.com)