



NOBLE MINERAL

EXPLORATION INC.

TSX.V: NOB
FWB: NB7
OTCQB: NLPFX

2023 PRESENTATION



Certain statements contained in this presentation that are forward-looking in nature are based on the current beliefs and assumptions of the Company's management.

When used in this presentation, the words "may," "could," "should," "anticipate," "believe," "estimate," "expect," "intend," "plan," "predict," and similar expressions and their variants may be used to identify forward-looking statements. Such statements are valid only as of today, and we disclaim any obligation to update this information.

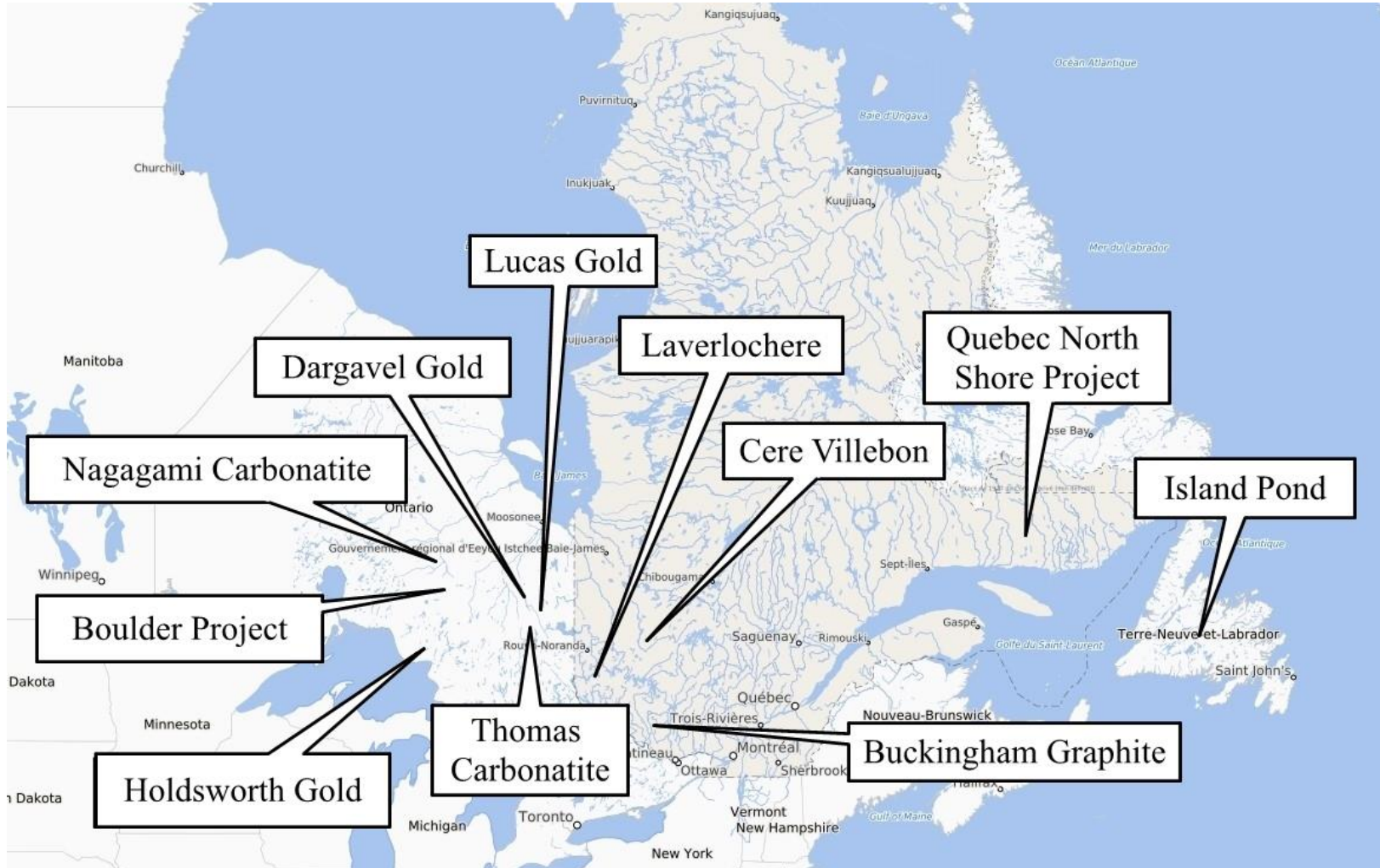
These statements are subject to known and unknown risks and uncertainties that may cause actual future experience and results to differ materially from the statements made. These statements are based on our current beliefs and expectations as to such future outcomes.

DISCLOSURE OF EXPLORATION RESULTS & HISTORICAL ESTIMATES

- Exploration activities were conducted on Noble's Projects prior to the adoption of National Instrument 43-101 ("NI 43-101"), as well as more recently when NI 43-101 was in force.
- Historical Exploration results that pre-date the adoption of NI 43-101 do not comply with current definitions prescribed by NI 43-101 or the *Canadian Institute of Mining*, and are disclosed only as indications of the presence of nickel, VMS, gold and other minerals. The historical models and data sets used to prepare these historical estimates are not available to Noble, nor have they been verified under current standards. In order to verify these resources as current estimates, Noble will have to conduct additional exploration work to verify the historic data. An independent qualified person for the purposes of NI 43-101 has not done sufficient work to classify these historical estimates as a current mineral resources or mineral reserves and Noble is not treating the historical estimates as a current mineral resources or mineral reserves.
- For information concerning the historical results of exploration activities conducted on Project 81, readers are encouraged to review "NI 43-101 Technical Report on the Project 81 Area", a technical report prepared for the Company by Ulrich Kretschmar, P. Geo., that is available on the Company's website (<http://www.noblemineralexploration.com>) and under the Company's profile on SEDAR (www.sedar.com). This is the most recent technical report prepared in respect of the Property, in accordance with *National Instrument 43-101* (NI 43-101).
- Wayne Holmstead, P. Geo. (ON), Exploration Manager for Noble Mineral Exploration Inc., is a "qualified person" as defined in NI 43-101, has reviewed and approved the disclosure of mineral exploration information contained in this presentation.

PROJECT GENERATOR FOCUSED ON BATTERY AND CRITICAL MINERALS

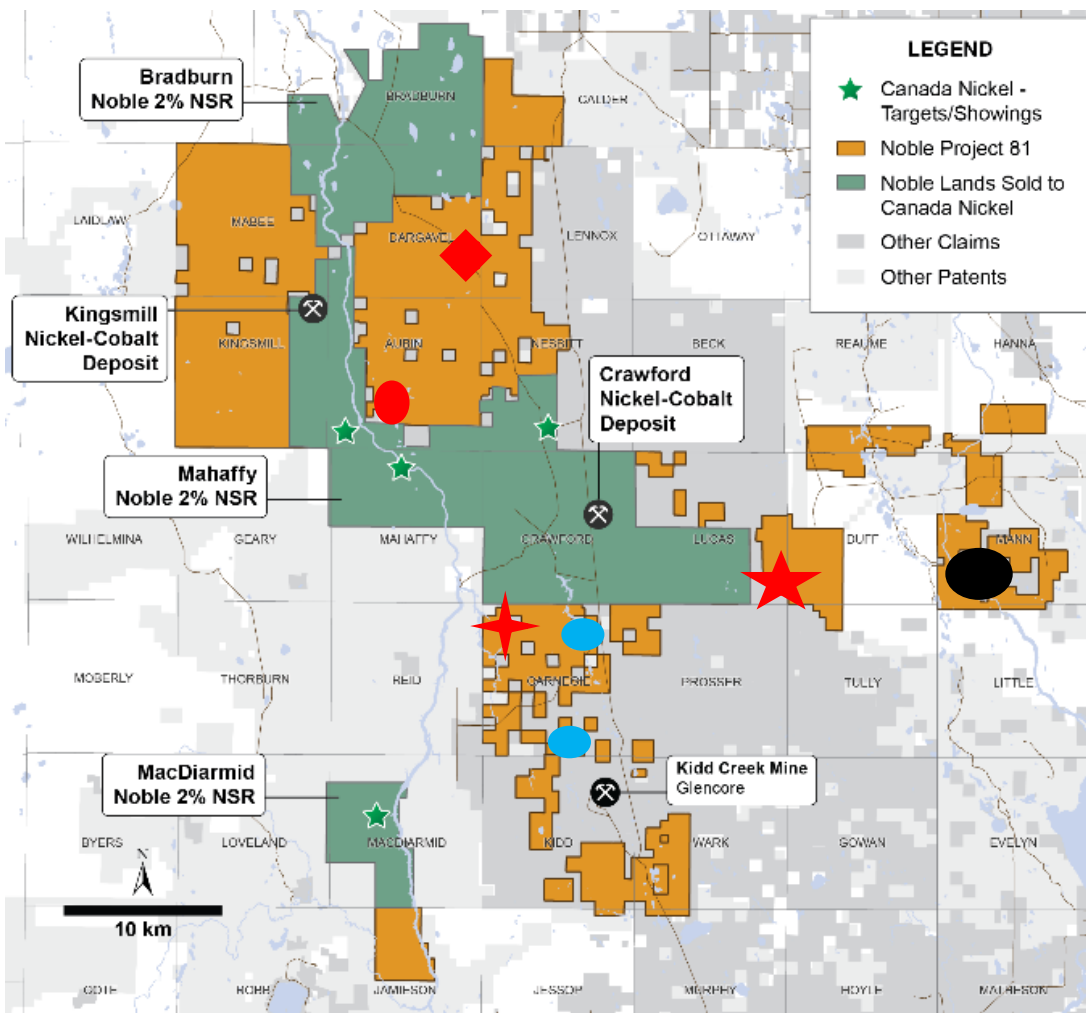
- **Project 81** ~25,000ha in the Timmins-Cochrane area of Northern Ontario, for which it holds the mineral rights for VMS and Gold available for option;
- **Carnegie/Kidd 2** – Multiple VMS targets for drilling Winter 2023 located 3-4 kms north of the Kidd Creek Mine;
- **Dargavel Gold Trend** – 7 kms strike length with follow up drilling underway;
- **Lucas Gold** – 17 km strike length with gold results reported;
- **Nickel-Cobalt/VMS/Gold** ~11,000ha in the Timmins-Cochrane area of Northern Ontario, for which it holds the mineral rights optioned to Canada Nickel Company;
- **Nagagami River Carbonatite** ~4,845ha Niobium and Rare Earth prospect near Hearst in Northern Ontario to be drilled in 2022;
- **Buckingham Graphite** in the Outaouais area of Western Quebec with large flake recoverable graphite with infill drilling proposed for 2024;
- **Cere-Villebon** ~483ha near Val d’Or, Quebec with historic Copper-Nickel-PGM results on the property drilling in 2023;
- **Laverlochere** ~518ha near Rouyn-Noranda, Quebec follow up work on Nickel-Copper-Cobalt-Gold and PGM results from 1960’s;
- **Central Newfoundland** ~14,400ha untested VMS/Copper/Gold anomaly with a 25km strike length with airborne EM and Mag for 2024
- **Securities portfolio:**
 - **2.9mm Canada Nickel Shares**
 - **18mm Spruce Ridge Shares**
 - **1.4mm Go Metals shares**
- **Well respected financial partner and technical partners applying state of the art technology to find metal in the ground** - geoscience, geophysics and gravity surveys to identify and prioritize gold, copper, lead, zinc, niobium and rare earths
- **Possible discoveries in the near future** – Multiple Diamond Drilling Programs throughout Winter-Spring 2023-2024








PROJECT 81

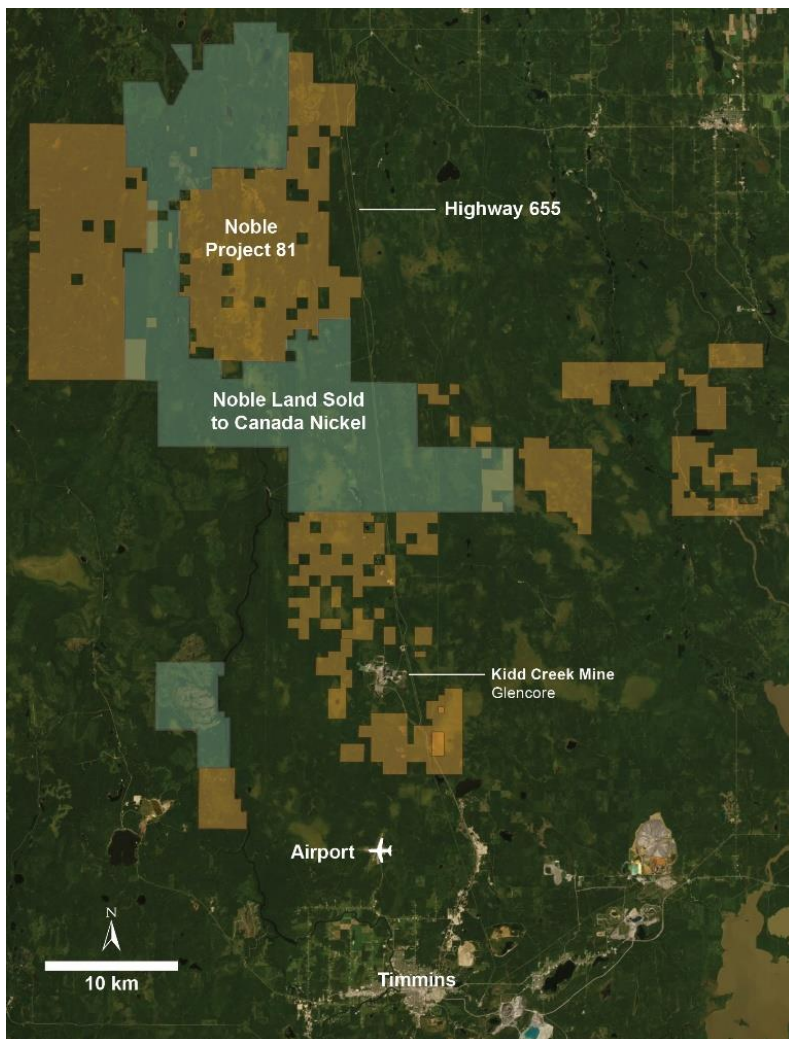
HISTORICAL EXPLORATION ACTIVITIES

TSXV: NOB
FWB: NB7
OTCQB: NLPXF



-  Drill Indicated Gold Showings
-  Gold Targets
-  VMS Targets
-  Dargavel Gold Trend
-  Lucas Gold Zone
-  Nickel Target

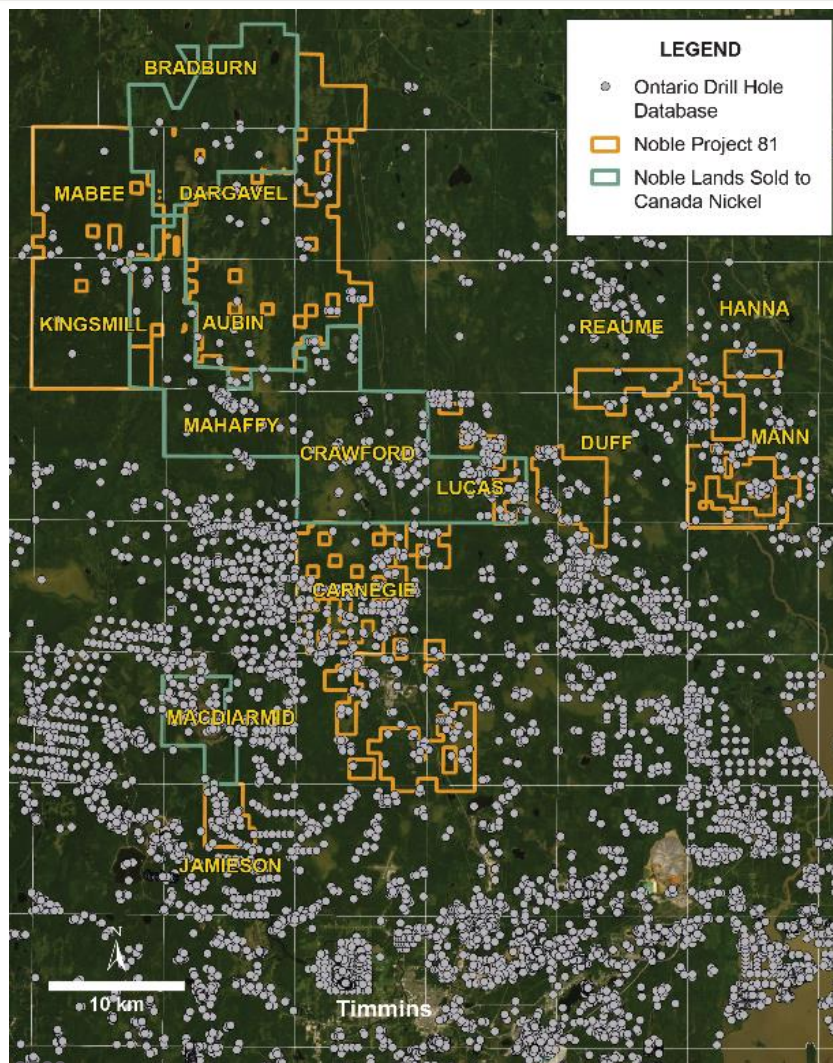
GOOGLE MAP SHOWING TIMMINS AREA INFRASTRUCTURE



- Significant industry services, supplies and infrastructure in place in Timmins with access by paved Highway 655
- Ample access to high tension power and water
- MoU signed with First Nations
- Drill programs proposed for Winter-Spring 2023-2024

PROJECT 81

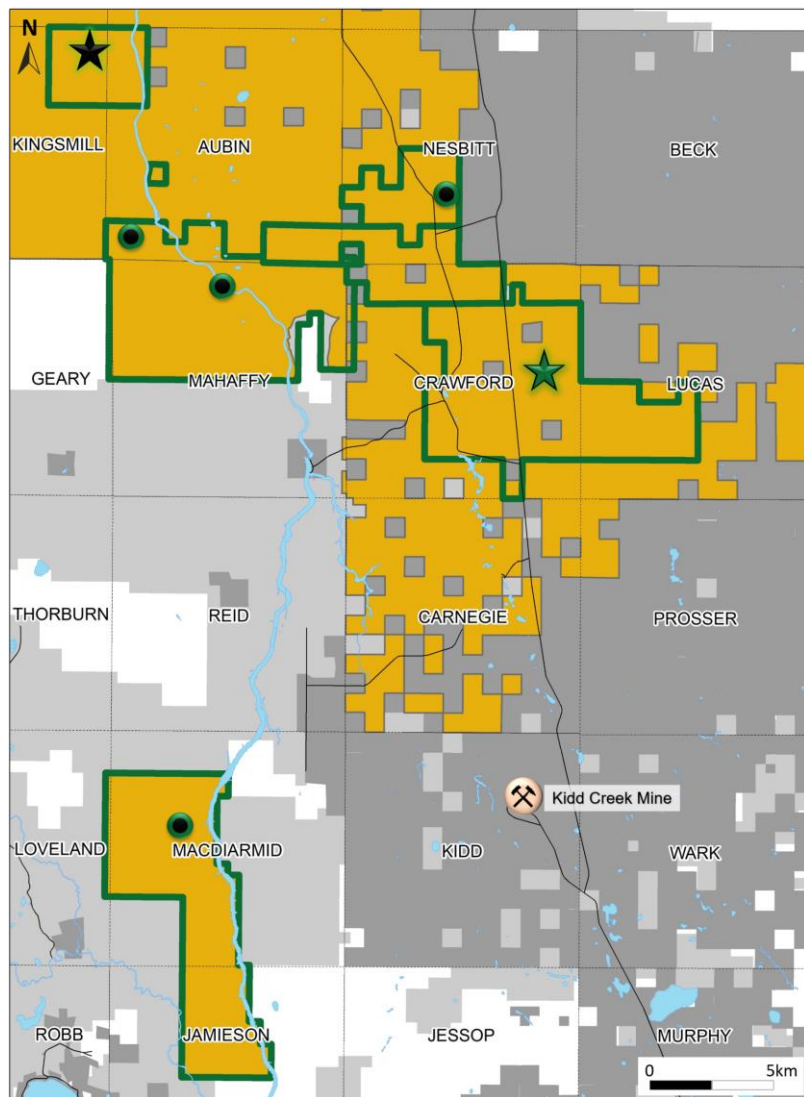
HISTORICAL EXPLORATION ACTIVITIES



- Under Explored Project Area ~25,000ha
- MNDM database showing the lack of exploration within the Project 81 area
- VMS Targets
- Gold Targets
- Noble Drill programs proposed for winter/ spring 2023-2024

CNC PROJECTS (NICKEL + COBALT +/- PGM)

TSXV: NOB
FWB: NB7
OTCQB: NLPXF

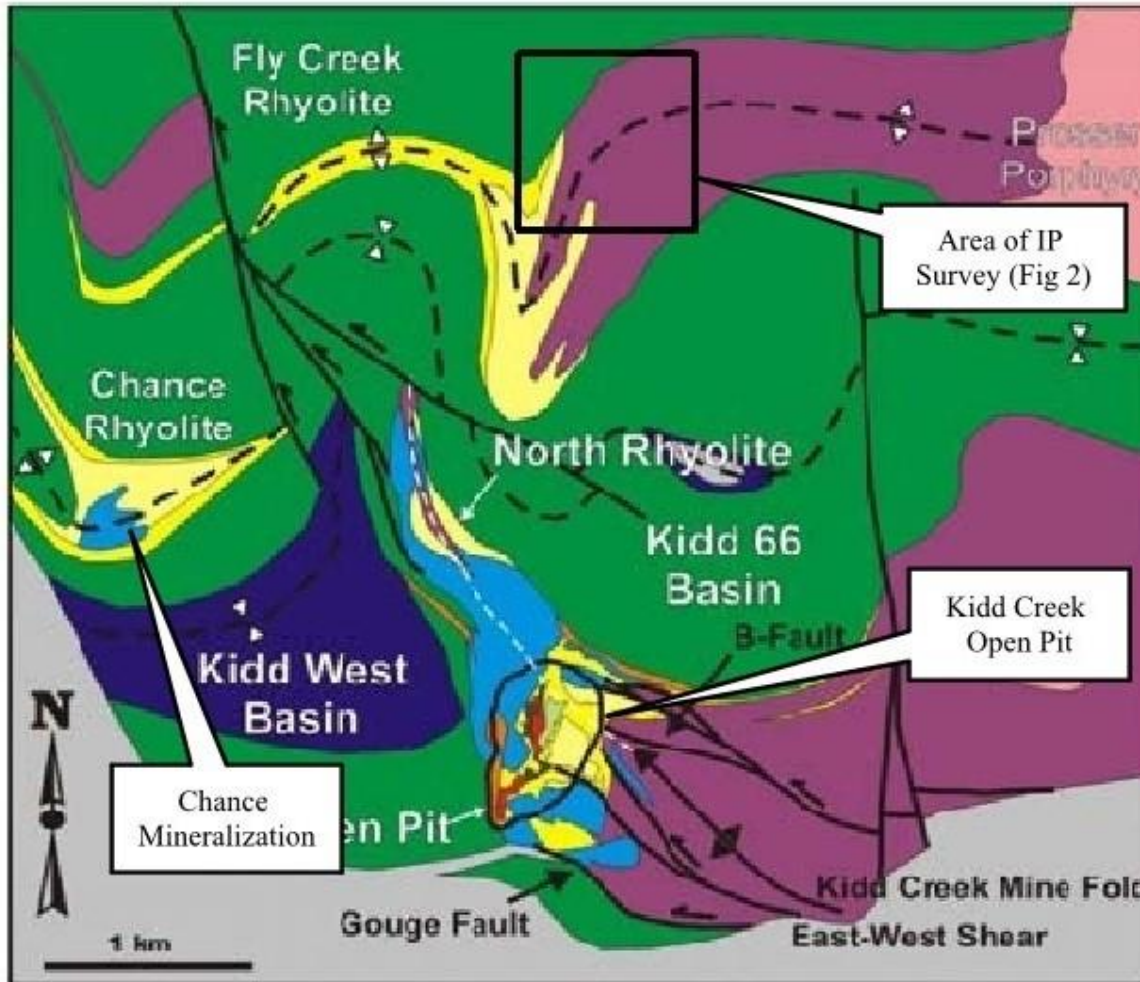


-  Canada Nickel - Targets/Showings
-  Crawford Nickel-Cobalt Deposit
-  Kingsmill Nickel-Cobalt Deposit
-  Noble Project 81
-  Noble lands sold to Canada Nickel
-  Other Claims
-  Other Patents

- **Project 81's Area Play is a ~25,000ha Land Package**
- **Located approximately 30 km north of Timmins world famous for >75mm oz. of Au production**
- **2-3 km north of the world class Kidd Creek Mine celebrating its 52nd year of continuous production having produced >161mm tonnes of ore**

GEOLOGY FOR THE CARNEGIE KIDD 2 PROJECT

TSXV: NOB
FWB: NB7
OTCQB: NLPXF



- Geological Map of the Kidd Creek Area showing Relation of Area Rhyolites to the Kidd Creek Rhyolite
- Drilling December 2023

LEGEND:

Traces of inferred upright F₁ folds
 Kidd Creek Mine fold: reclined F₁, antiform
 Faults

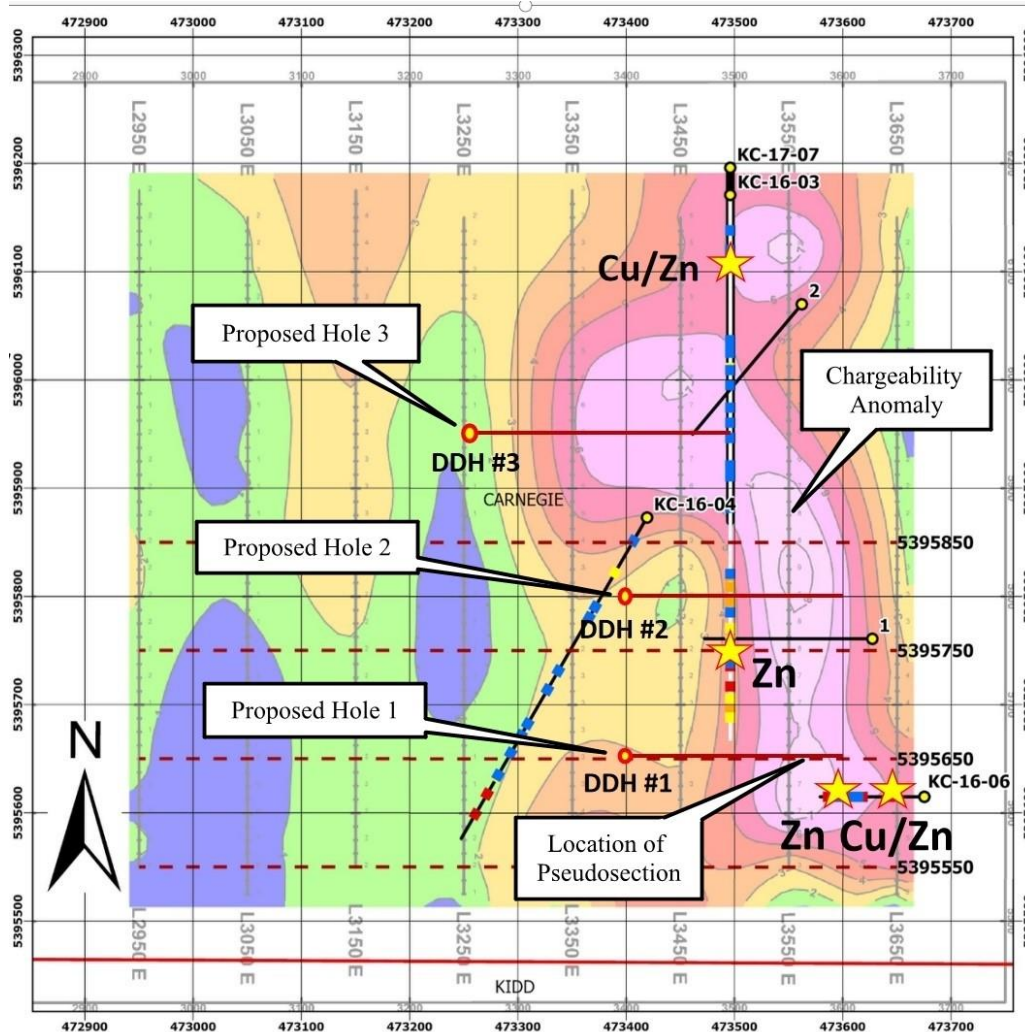
Kidd Volcanic Complex (KVC):

Heterolithic epiclastic breccias
 Subvolcanic gabbroic sills
 Hanging-wall basalts with thin felsic tuffs
 Quartz-feldspar porphyritic rhyolite
 Graphitic wacke and argillite

Rock Types:

Prosser Porphyry intrusions
 Porcupine Group turbidite greywackes
 Massive sulfide lenses
 Main chalcopyrite stringer zone
 Fragmental rhyolites
 Massive footwall rhyolite
 Komatiite flows, sill and low-Ti Tholeiites

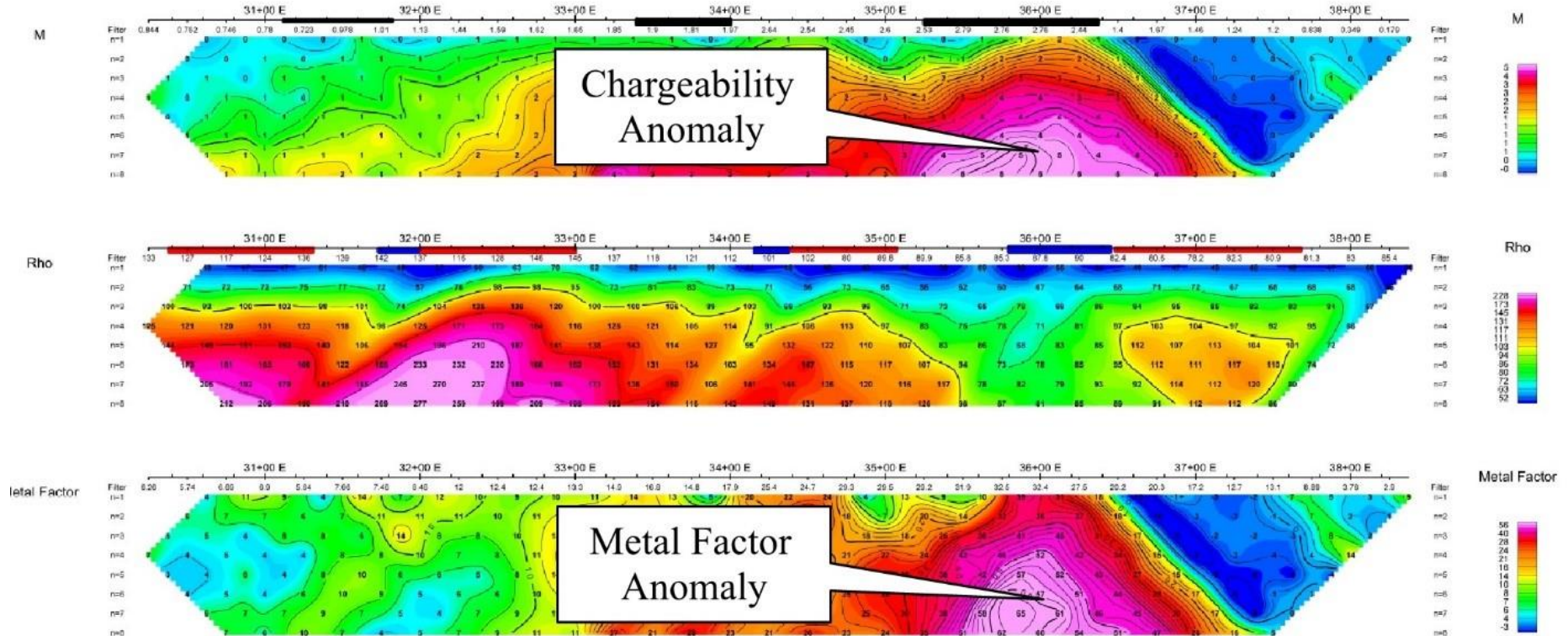
TARGET A FOR THE CARNEGIE KIDD 2 PROJECT



- Plan showing the location of the chargeability anomaly and proposed drill holes.
- The yellow stars indicate mineralization encountered in past drill programs.
- Drill mobilization November 2023

CHARGEABILITY AND METAL FACTOR ANOMALY FOR TARGET A

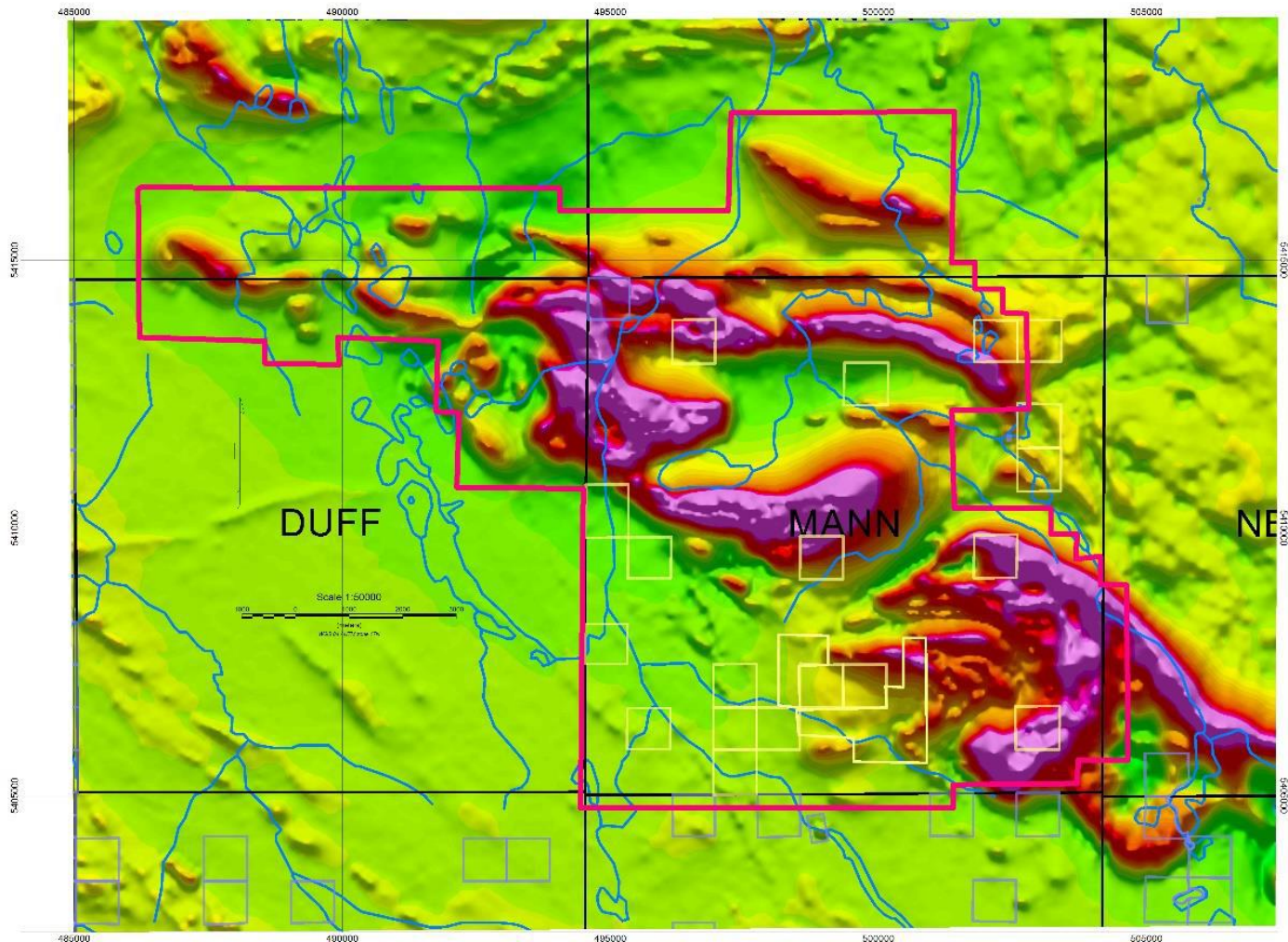
TSXV: NOB
FWB: NB7
OTCQB: NLPXF



Pseudo-section with the corresponding resistivity and metal factor

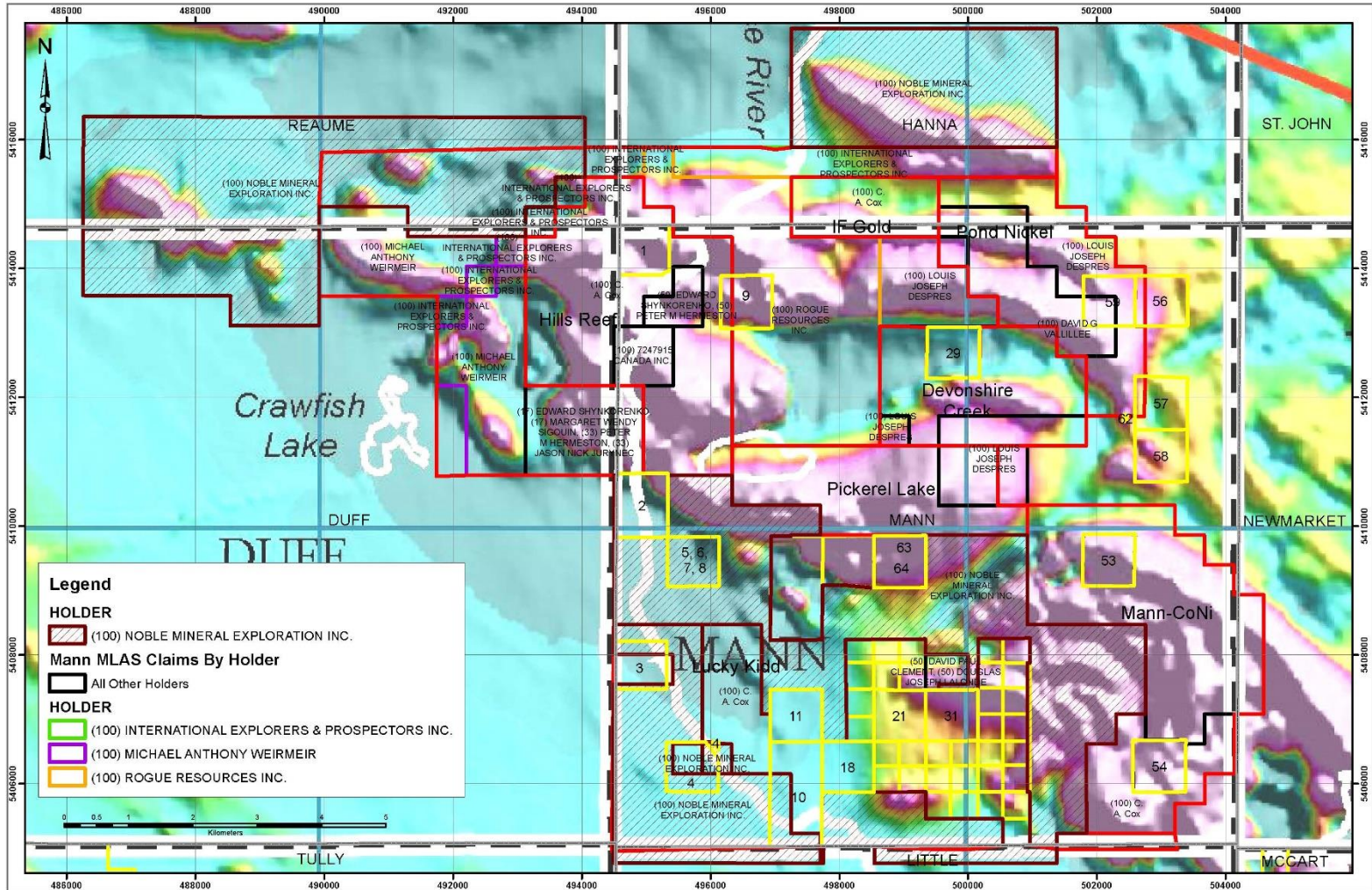
MANN TOWNSHIP STAKED AND OPTIONED CLAIMS

TSXV: NOB
FWB: NB7
OTCQB: NLPXF

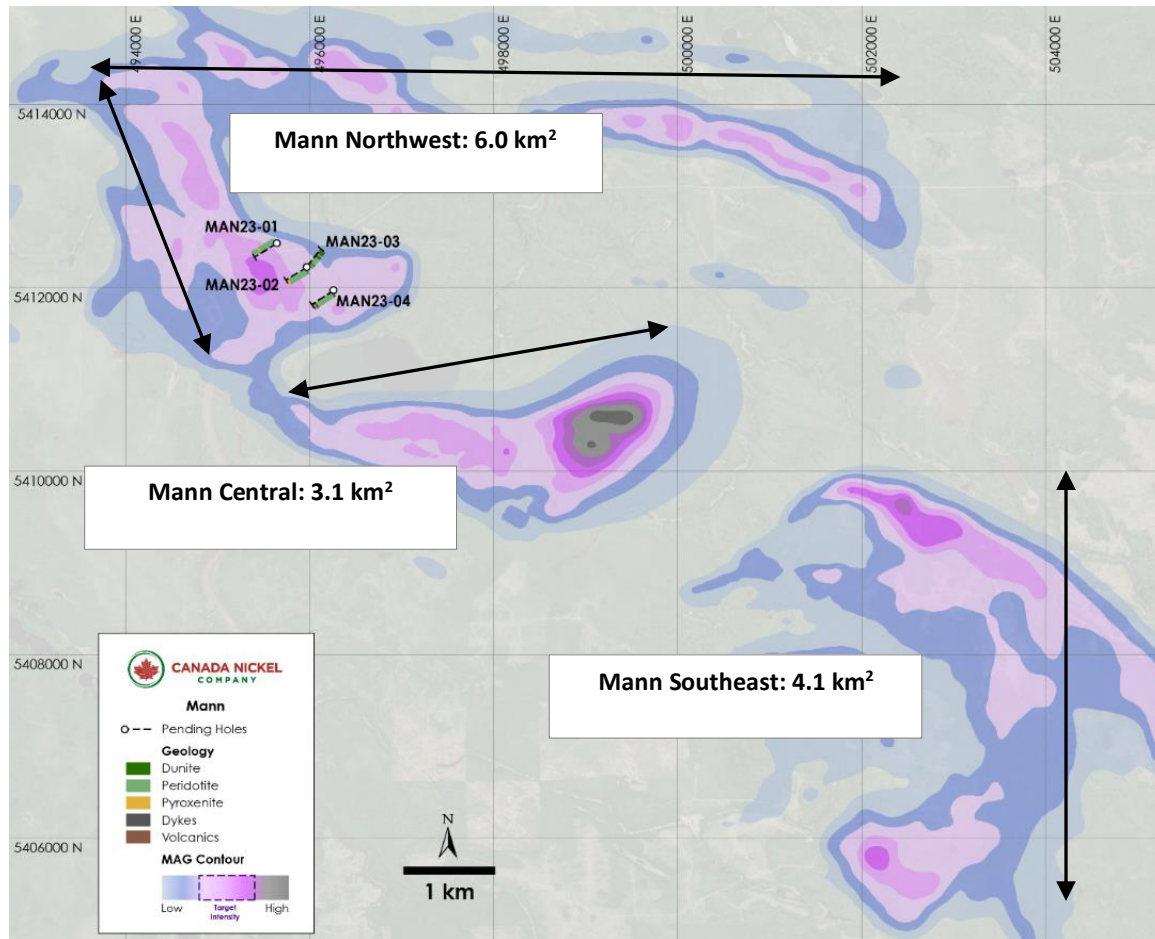


MANN TOWNSHIP STAKED AND OPTIONED CLAIMS

TSXV : NOB
FWB : NB7
OTCQB : NLPXF



MANN TOWNSHIP NORTHWEST, CENTRAL AND SOUTHEAST ZONES



- The Mann properties are optioned to Canada Nickel who has carried out Airborne EM/Mag and Gravity
- Mann Northwest and Mann Central have been drilled including a total of 16 holes with results pending
- Project will revert to an 80/20JV with Canada Nickel as operator

THE COUSINEAU BOULDER

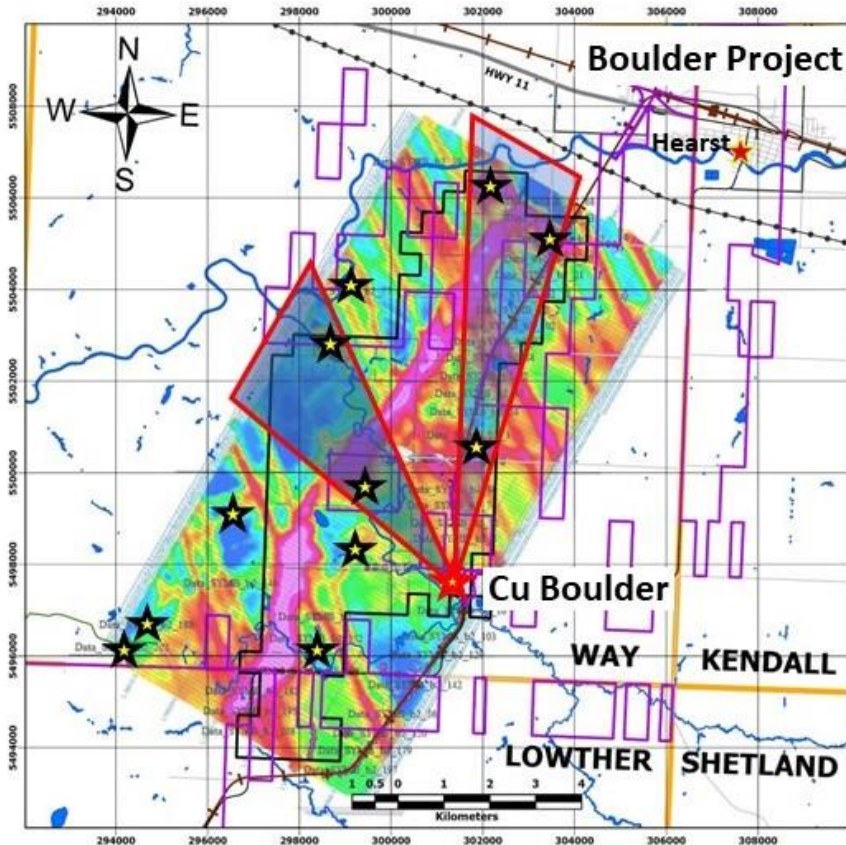


THE COUSINEAU BOULDER

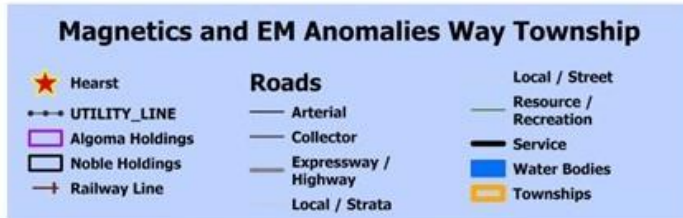


BOULDER MAG AND EM PICKS WITH ICE TRAINS IDENTIFIED

**TSXV : NOB
FWB : NB7
OTCQB : NLPXF**

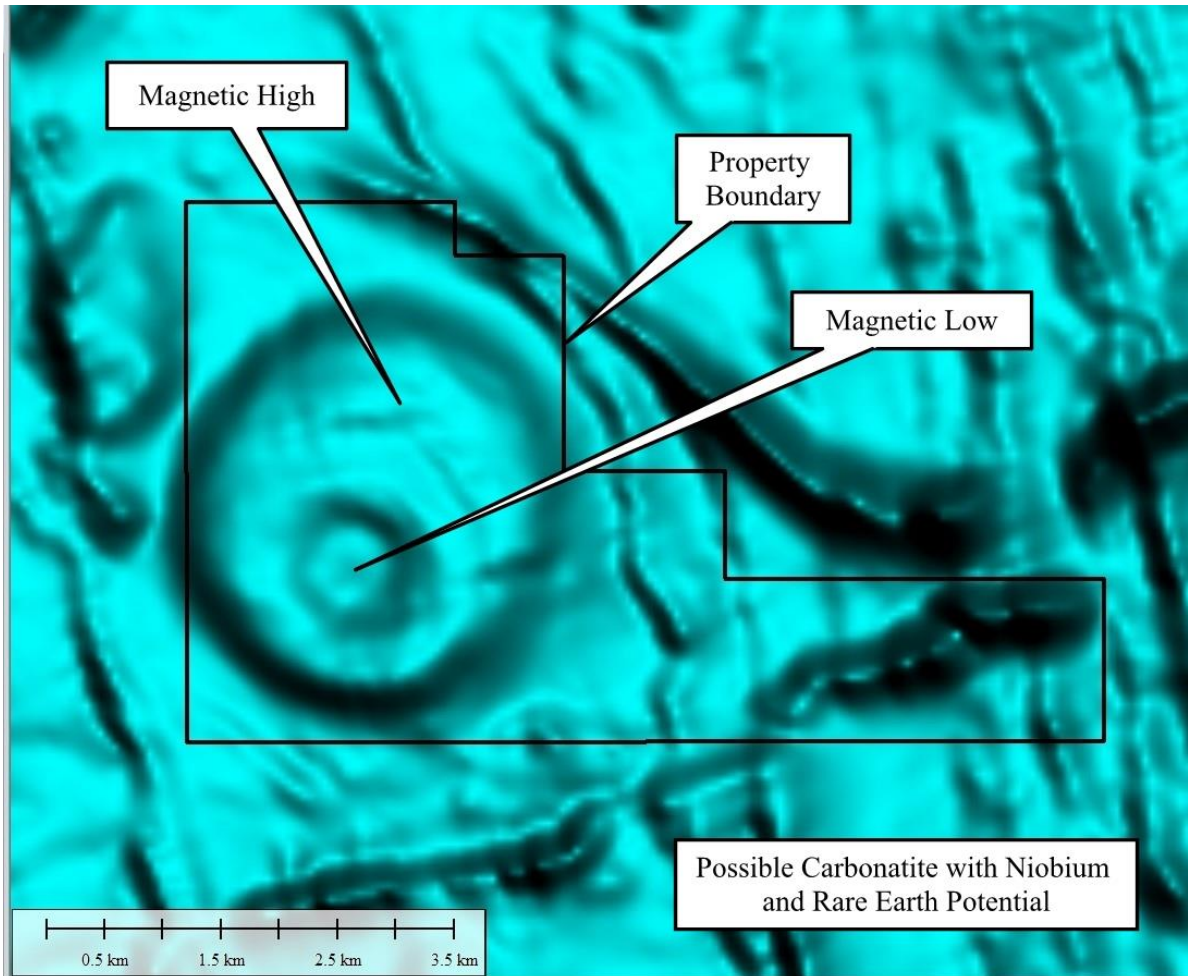


Boulder		NOV 10, 2023			
	ppm	US\$/lb or oz	Cdn\$/lb or oz	Cdn\$ Value	
Cu	718760	71.88 %	3.64	5.02	7938.4272
Ni	3338	0.33 %	7.71	10.64	77.2464
Pb	34922	3.49 %	0.99	1.37	105.1886
Zn	10929	1.09 %	1.16	1.60	38.368
Au	3.79	3.79 g/t	1,936.80	2,672.78	326.77
Ag	252	252 g/t	22.22	30.66	249.24
Rh	0.6	0.6 g/t	3,800.00	5,244.00	101.50
Pd	4.43	4.43 g/t	950.00	1,311.00	187.35
Pt	2.2	2.2 g/t	842.00	1,161.96	82.46
					\$9,106.54



THOMAS TOWNSHIP POTENTIAL CARBONATITE

TSXV: NOB
FWB: NB7
OTCQB: NLPXF



The Cere Villebon property consists of 15 claims (483 hectares). The property is road and power accessible, located only 4 kilometers east of Highway 117, the highway that connects Montreal to Val d'Or;

The Cere Villebon property consists of pyrrhotite and chalcopyrite mineralization in fracture fillings hosted by ultramafic rocks in the metamorphic halo of the Freville Batholith. The copper, nickel, platinum group mineralization is located in two zones, the North and the South Zone;

Drilling and resource estimates done by the Groupe La Fosse Platinum Inc., in 1987, evaluated a historical resource of 421,840 tonnes grading 0.52% copper, 0.72 % nickel and 1.08 g/t combined platinum-palladium (Groupe La Fosse Platinum Inc., 1987 Annual Report). (This estimate is historical in nature, non-compliant to NI 43-101)

Diamond Drill Hole FV-87-1 drilled by LaFosse Platinum in 1987 into the North Zone intersected 27.38* meters of 0.70% nickel, 0.68% copper, 0.23 g/t platinum, 0.64 g/t palladium and 0.08 g/t gold including 7.65* meters of 0.94% nickel, 1.02% copper.

A drill program and geophysical survey have been completed on the Cere Villebon Project southeast of Val d'Or, Quebec. The program included 7 diamond drill holes for a total of 1,955 meters. Significant mineralization was encountered in holes 1 and 5 and are summarized in Table below in a following slide

Sampling of Hole 1 from the Cere Villebon drill program returned analyses of 5.2 meters* of 0.66% copper, 0.94% nickel, 0.04% cobalt, 0.25 g/t platinum and 0.66 g/t palladium within a 63 meter* wide mineralized zone grading 0.24% copper, 0.38% nickel, 0.02% cobalt, 0.11 g/t platinum and 0.33 g/t palladium. (*true width not known at this time)

Sampling of Hole 5, located 25 meters east of Hole 1, of 0.46% copper, 0.69% nickel, 0.03% cobalt 0.78 g/t platinum and 1.28 g/t palladium over 19 meters* within a 37 meter* zone of 0.36% copper, 0.50% nickel, 0.02% cobalt, 0.36 g/t platinum and 0.54 g/t palladium. (*true width not known at this time)

The mineralization is associated with a strong chargeability anomaly associated with a resistivity low reflecting the sulphide mineralization encountered in the core. (See Figures 1, 2 and Image 1)

Holes 2, 3, 4, 6, and 7 showed no significant mineralization and were drilled off trend of Hole 1 and 5 to test targets on other parts of the property.

SIGNIFICANT HISTORIC RESULTS FROM CERE-VILLIBON

The significant results for the holes which intersected the Cu-Ni mineralized peridotite are given below:

Hole number	From (m)	To (m)	Length (m)	Ni (%)	Cu (%)	Pt (ppb)	Pd (ppb)	Au (oz/t)	Ag (oz/t)	Zone
F-1	44.97	57.93	12.96	0.99	0.57	-	-	-	-	North
F-3	54.88	85.37	30.49	0.41	0.28	-	-	-	-	North
F-4	46.34	50.30	3.96	0.38	0.24	-	-	-	-	North
F-4	53.35	59.45	6.10	0.35	0.197	-	-	-	-	North
F-4	70.73	83.84	13.11	0.33	0.30	-	-	-	-	North
F-5	53.35	56.40	3.05	0.64	0.44	-	-	-	-	North
F-5	56.40	67.07	10.67	1.02	0.82	-	-	-	-	North
F-5	67.07	71.34	4.27	0.43	0.52	-	-	-	-	North
F-6	58.54	62.20	3.66	0.17	0.34	-	-	-	-	North
F-6	63.72	71.34	7.62	1.10	0.88	-	-	-	-	North
F-6	62.20	79.27	17.07	0.82	0.63	-	-	-	-	North
F-6	79.27	86.89	7.62	0.26	0.45	-	-	-	-	North
F-7	13.11	26.34	13.23	0.50	0.48	-	-	-	-	North
F-8	55.18	68.60	13.41	0.39	0.37	-	-	-	-	North
F-9	41.52	46.10	4.57	0.19	0.23	-	-	-	-	North
F-12	118.90	125.91	7.01	0.62	0.43	-	-	-	-	North
F-13	122.56	125.00	2.44	0.53	0.59	-	-	-	-	North
F-13	142.38	144.82	2.44	0.53	0.45	-	-	-	-	North
F-14	120.73	124.09	3.35	0.55	0.27	-	-	-	-	North
F-17	42.68	47.26	4.57	0.23	0.10	-	-	-	-	South
U-2	78.81	86.89	8.08	0.44	0.54	-	-	-	-	North
U-2	101.07	114.33	13.26	0.33	0.26	-	-	-	-	North
U-3	73.66	76.95	3.29	0.13	0.49	-	-	-	-	North
U-3	83.51	94.39	10.88	0.43	0.27	-	-	-	-	North

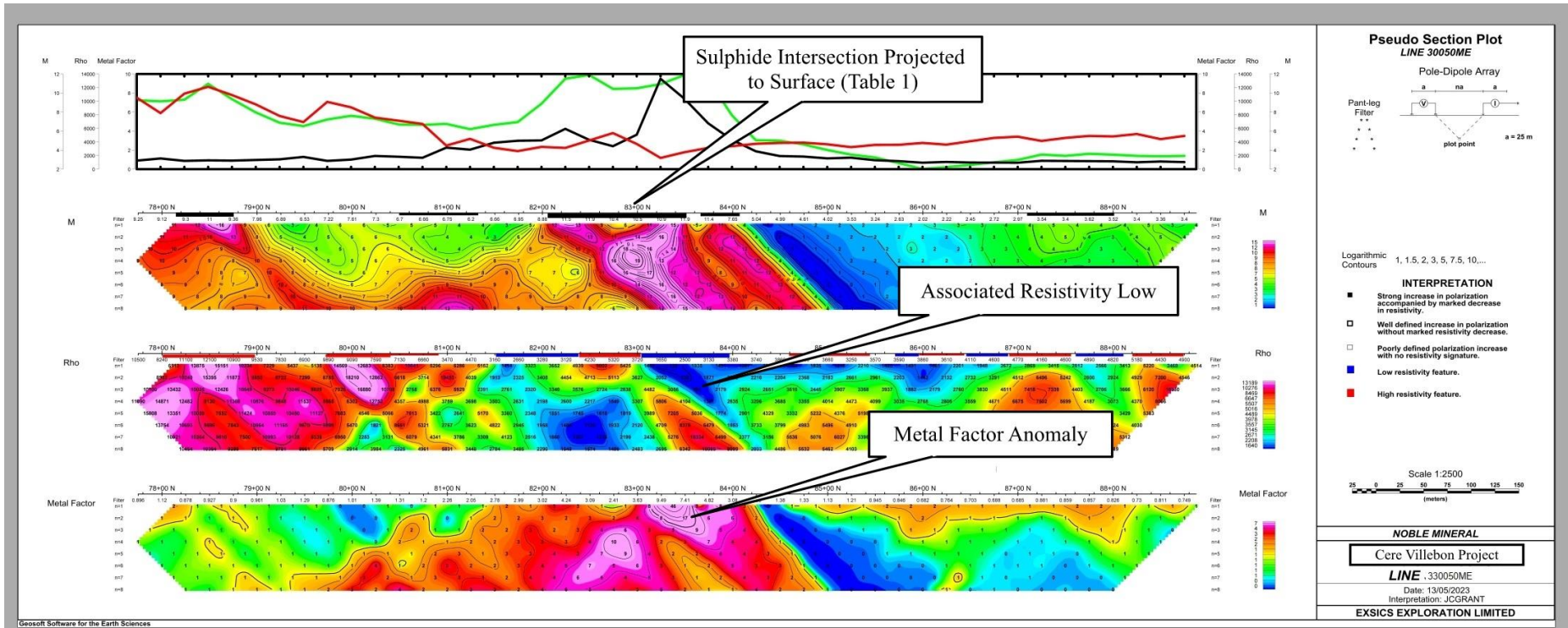
CERE-VILLEBON SIGNIFICANT 2023 RESULTS FROM HOLE 1 AND 5

Hole 1								
From (m)	To (m)	Width (m)	Cu (%)	Ni (%)	Co (%)	Pt (g/t)	Pd (g/t)	Pt+Pd (g/t)
101.50	102.50	1.00	0.41	0.46	0.02	0.35	0.63	0.98
137.35	148.00	10.65	0.12	0.25	0.01	0.06	0.13	0.19
162.00	225.00	63.00	0.24	0.38	0.02	0.11	0.25	0.36
including								
166.70	169.00	2.30	0.25	0.45	0.02	0.09	0.20	0.29
plus								
192.00	197.00	5.00	0.44	0.45	0.02	0.17	0.35	0.52
plus								
200.00	205.20	5.20	0.66	0.94	0.04	0.25	0.66	0.91
plus								
210.00	221.00	11.00	0.38	0.56	0.02	0.17	0.37	0.54
Hole 5								
From (m)	To (m)	Width (m)	Cu (%)	Ni (%)	Co (%)	Pt (g/t)	Pd (g/t)	Pt+Pd (g/t)
157	194	37.00	0.36	0.5	0.02	0.36	0.54	0.90
including								
165	184	19.00	0.46	0.69	0.03	0.50	0.78	1.28

Significant Intersections in Hole 1 and 5 July 2023

CERE-VILLEBON CHARGEABILITY ANOMALY

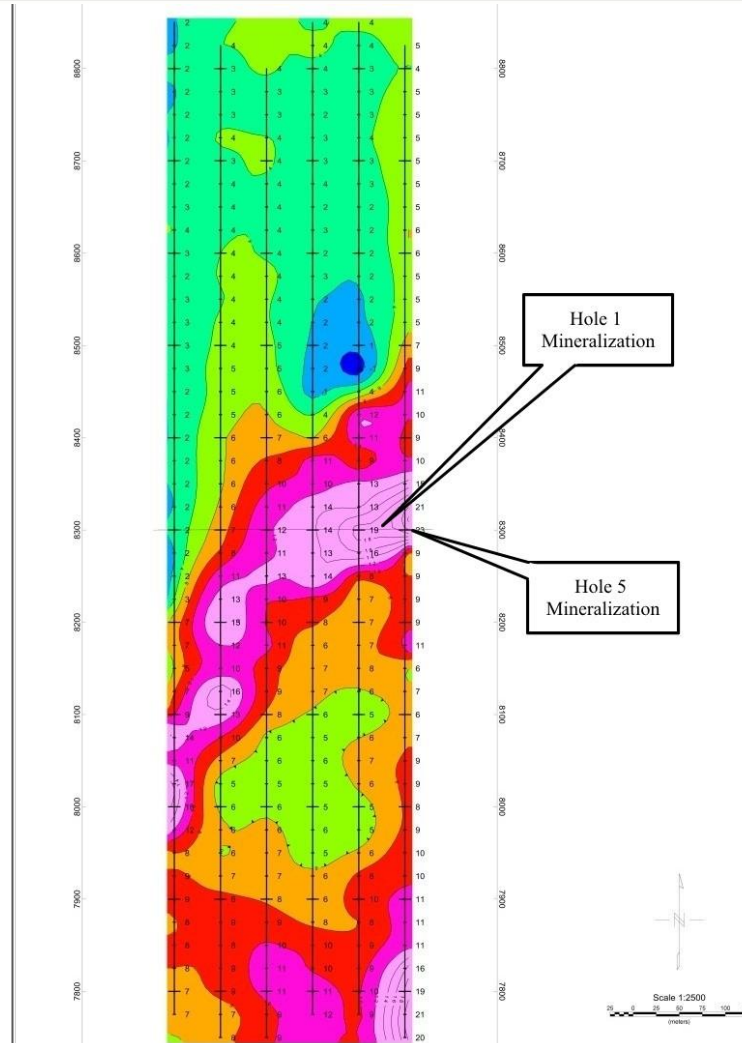
TSXV: NOB
 FWB: NB7
 OTCQB: NLPXF



Chargeability Anomaly Showing Mineralization in Hole 1 and 5

CERE-VILLEBON CHARGEABILITY ANOMALY

TSXV : NOB
FWB : NB7
OTCQB : NLPXF



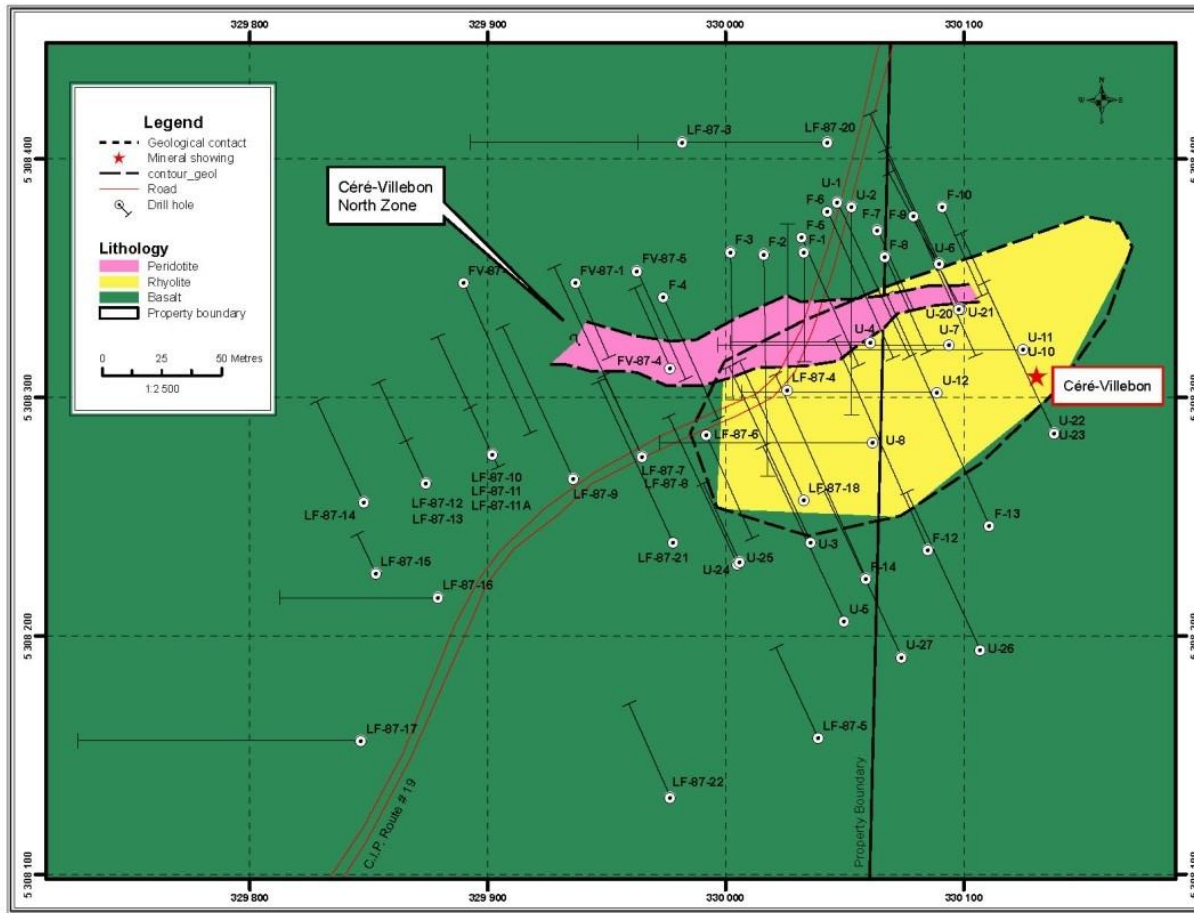


Figure 4. The North Zone of CERE-VILLEBON Deposit (GM38561)

CERE-VILLEBON DEPOSIT SOUTH ZONE

TSXV: NOB
FWB: NB7
OTCQB: NLPXF

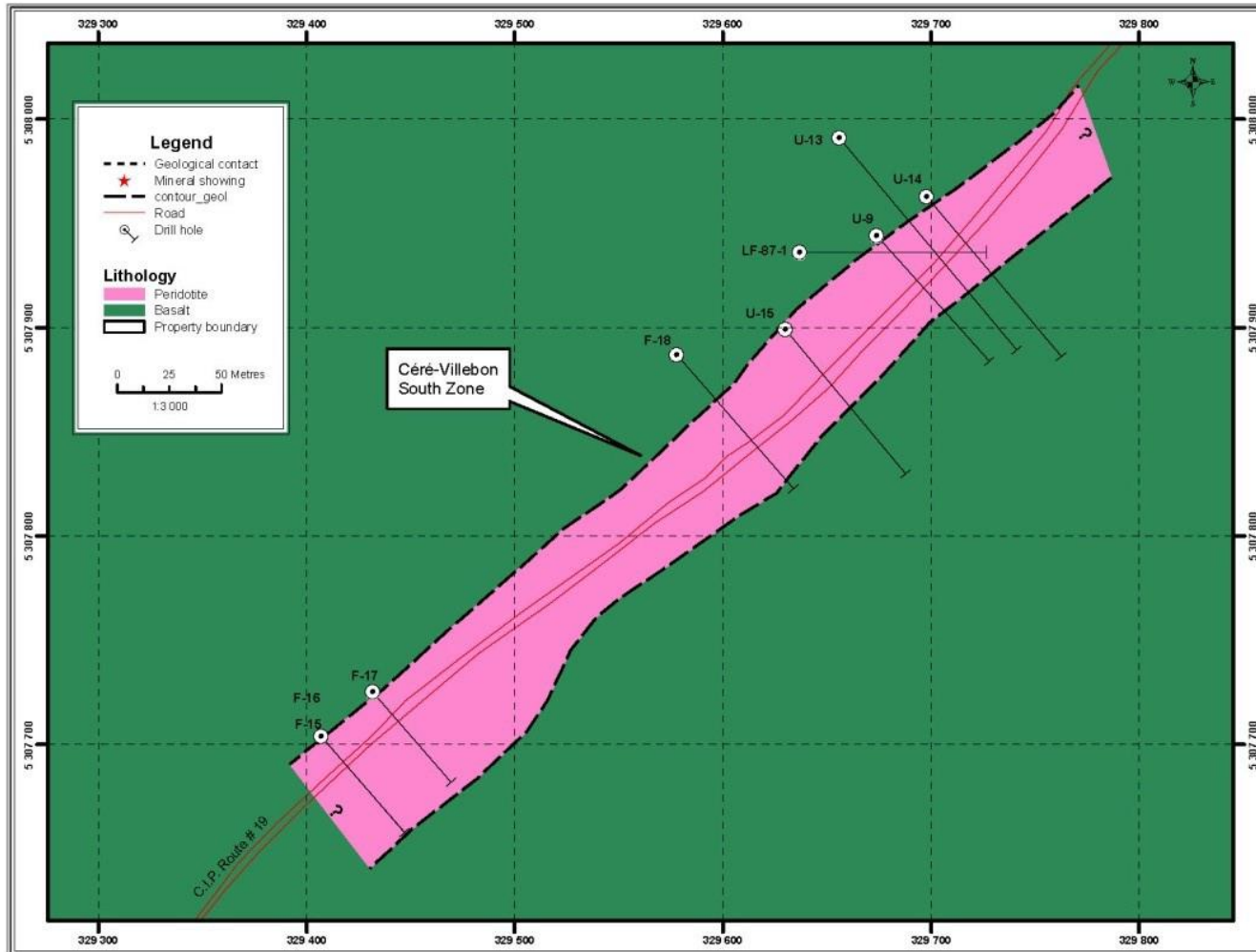
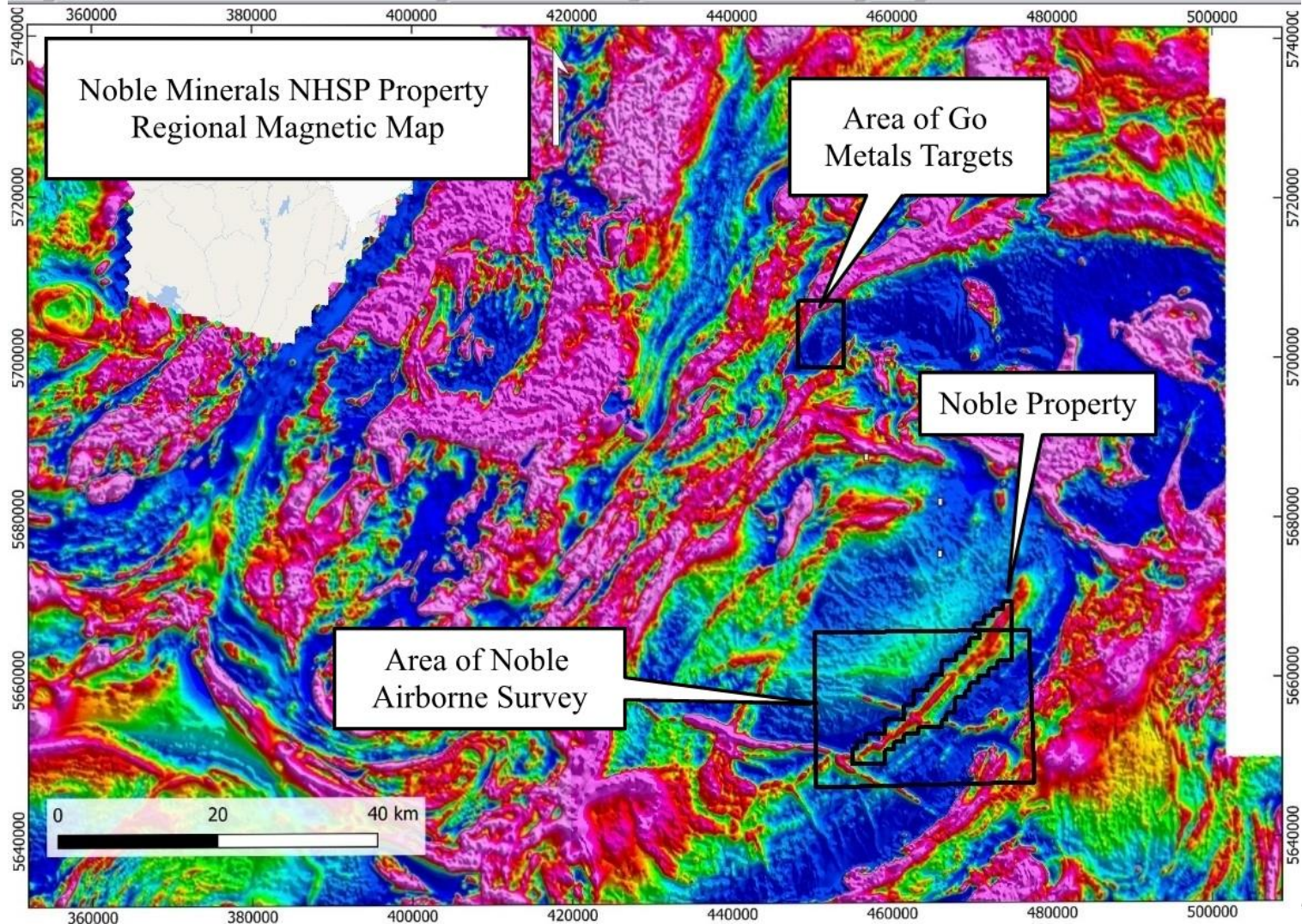


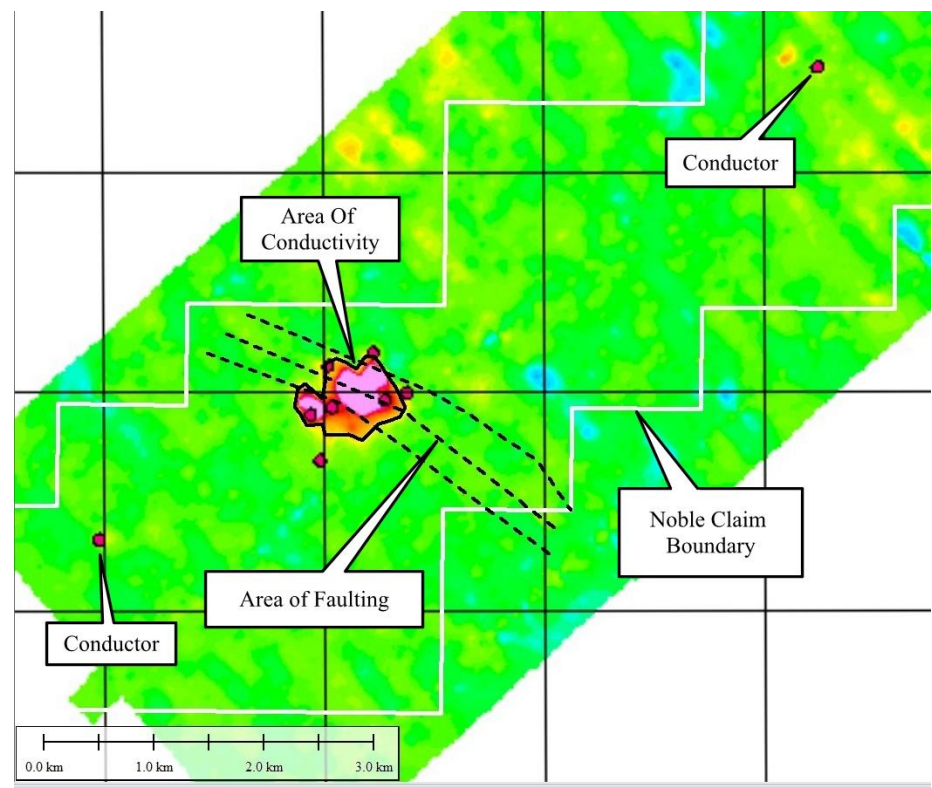
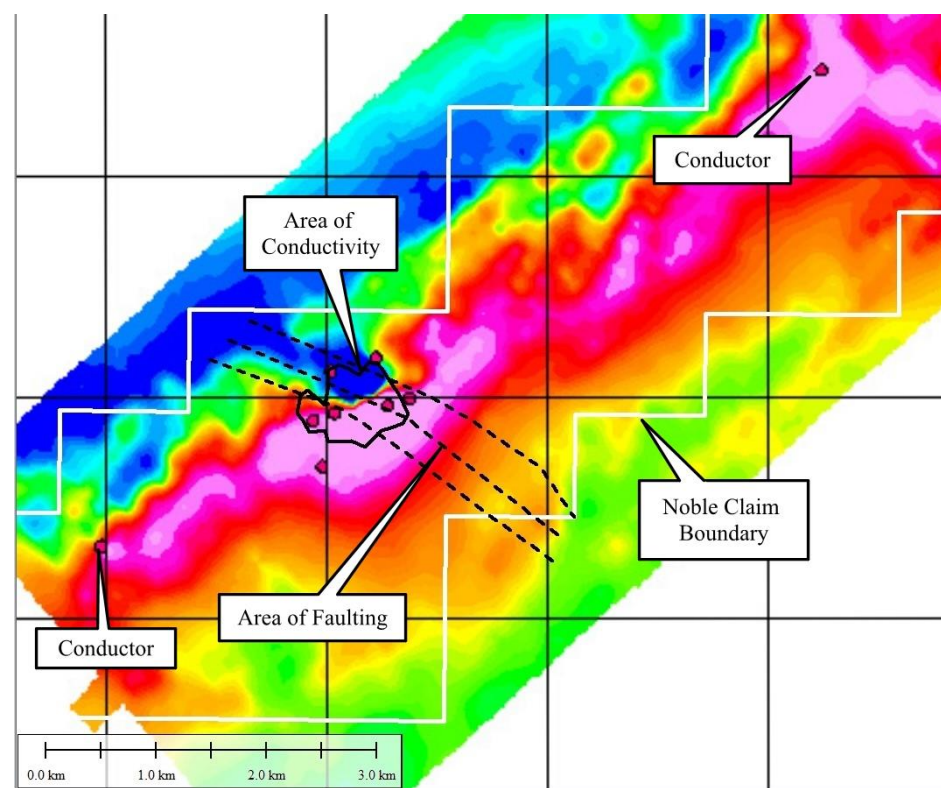
Figure 5. The South Zone of CERE-VILLEBON Deposit (GM38561)

CERE-VILLEBON MINERALIZED DRILL CORE SECTION 2023

TSXV: NOB
FWB: NB7
OTCQB: NLPXF





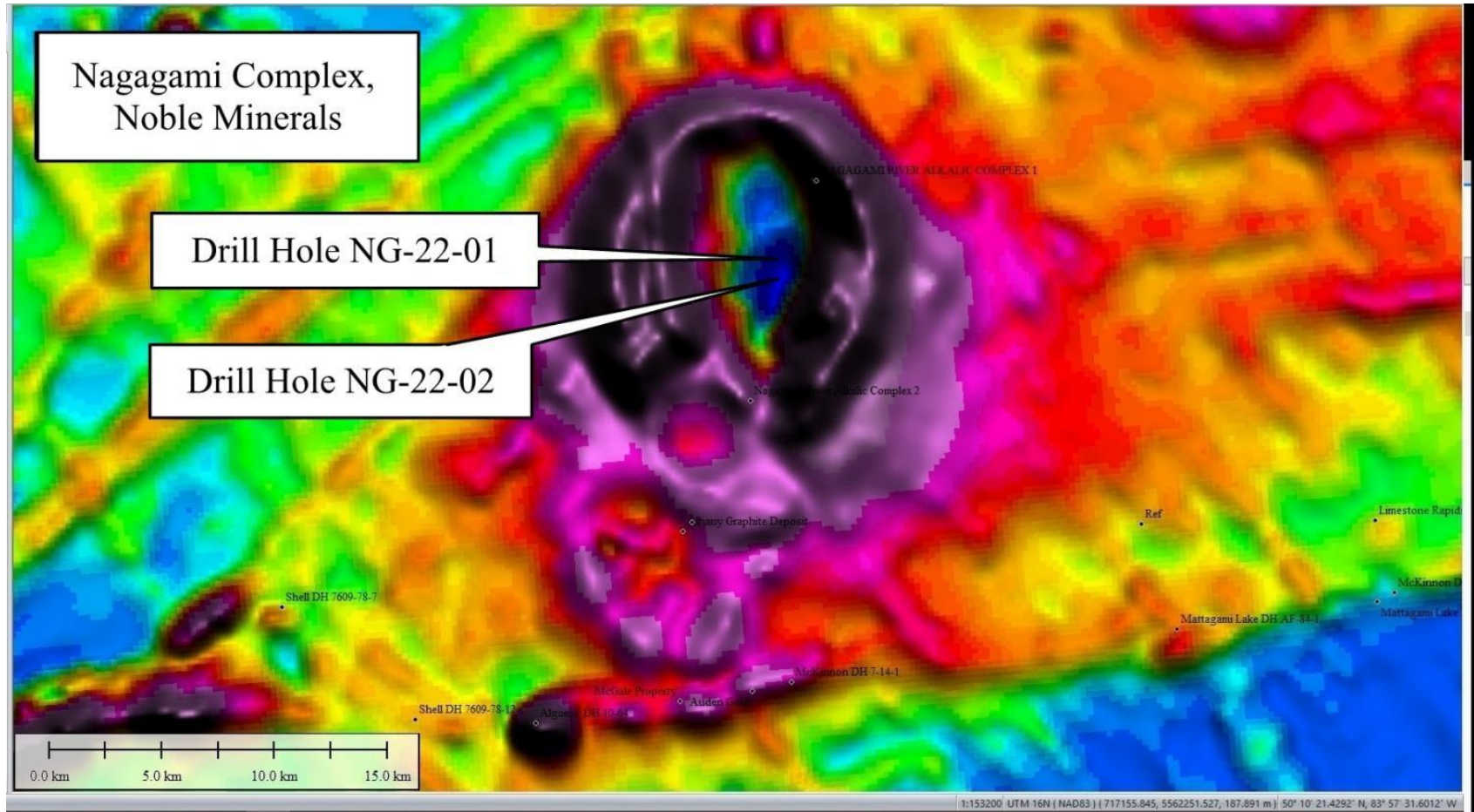


The Nagagami Carbonatite Property consists of 234 claims, to cover the Nagagami Carbonatite/Alkalic Complex, located about 65 kilometers Northwest of Hearst Ontario. The staked area is equivalent to about 4,845 hectares or 48.5 square kilometers.

Recent research by Noble indicated remarkable similarities between the niobium producing Niobec Mine and the Nagagami Complex. The Niobec Mine, now owned by Magris Performance Materials, started commercial production of niobium pentoxide in 1976. It is one of the major sources of niobium in the world and North America's only source of pyrochlore. It currently produces around 7%-8% of the niobium used globally. Niobec also has a resource in rare earth metals.

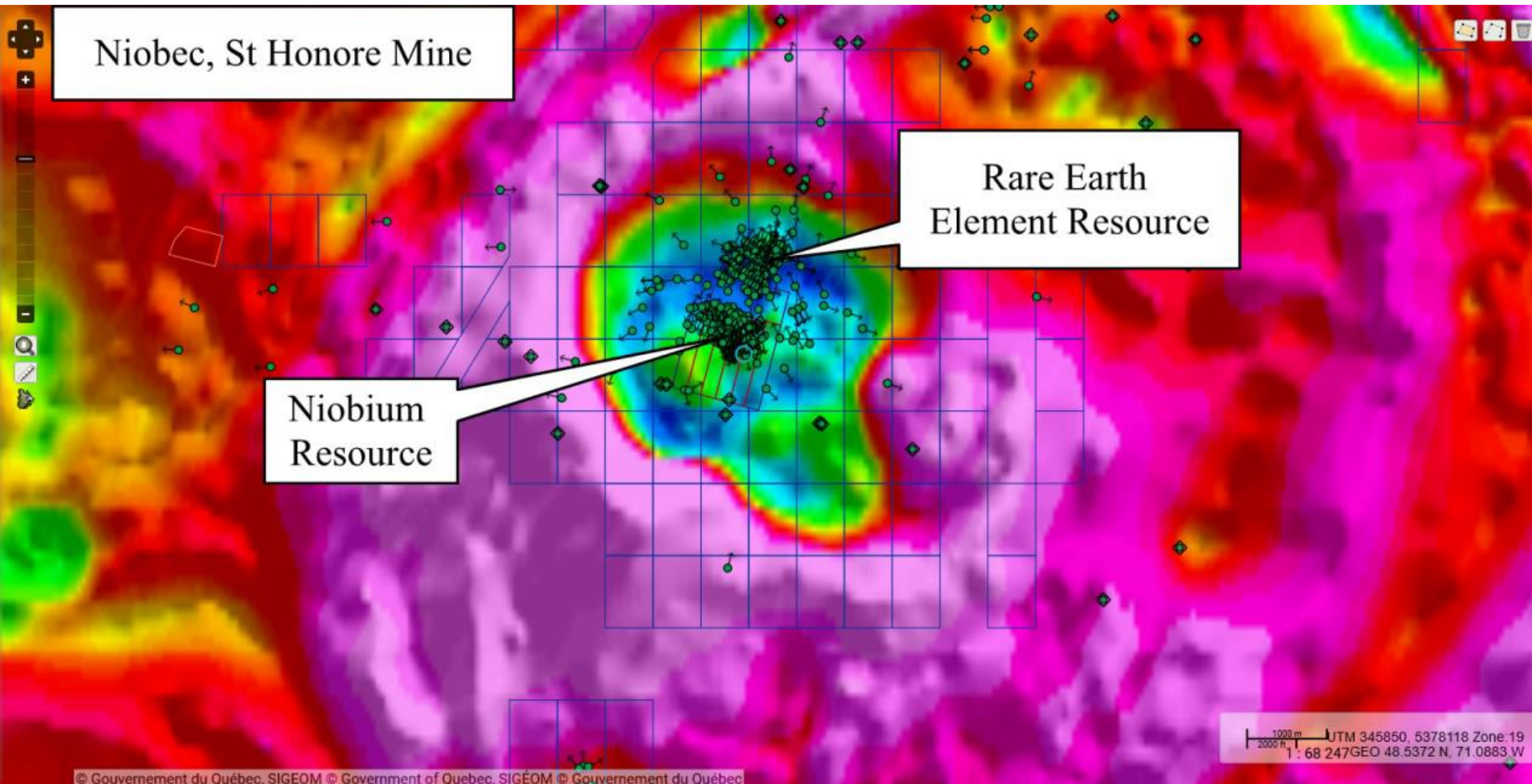
A study of the magnetic data for the Nagagami Complex and the Niobec Mine both indicate a donut shaped structures with syenitic rocks forming the circular magnetic high with carbonatitic rocks forming the central magnetic low. At Niobec, it is in the central magnetic low where the Niobium and Rare Earth mineralization is hosted.

- Sampling of the core in hole NG-22-02 has identified a 61.0 metre* long mineralized zone on the Nagagami Project in Ontario. The mineralized zone grades 0.554% Total Rare Earth Oxide (TREO) and 0.098% Nd₂O₃ (includes new and December 5, 2022, results).
- 61.0 metre* intercept (between 373 and 434m) contains 0.554% Total Rare Earth Oxides and 0.098% Nd₂O₃
- Above intercept includes 17.0 metres* (between 380 and 397m) containing 0.665% TREO and 0.118% Nd₂O₃.
- Two smaller intercepts contain 0.573 % TREO and 0.105% Nd₂O₃ over 4 metres* (between 528 and 532m) and 0.605 % TREO and 0.119% Nd₂O₃ over 7 metres (between 538 and 545m).
- A slightly longer mineralized intercept also contains 0.24% Ce₂O₃ over 89 metres* (345 to 434m).
- The average Dy₂O₃, Nd₂O₃, Pr₂O₃, and Tb₂O₃ content of the 61 metre intercept is equivalent to 5.2 g/t of gold (this comparison was made using REE and Gold US\$ values reported by Kitco.com at 4 pm on Jan 13,2022).



Carbonatite/Alkalic Complex/234 Claims/4,845ha/65km North of Hearst

NIOBEC MINE IN CARBONATITE IN QUEBEC COMPARISON



The Laverlochere property consists of 12 claims (518 hectares). The property is road and power accessible, located about 100 kilometers south of Rouyn-Noranda.

The mineralization is primarily chalcopyrite and a 30 cm sample across the quartz lense analyzed 0.57% copper and 2.6 g/t gold.

Drillhole 32375 The analyses reportedly revealed a 214.7 meter (0 to 93.9 m) mineralized interval grading 0.01% Copper, 0.29% Nickel and 0.02% Cobalt (Exact width not known at this time).

Drill hole 32376, from 97.6 m to the bottom of the hole at 108.8 eight samples of core from the gabbro, andesite and a chlorite bearing chist were analyzed for copper, nickel and zinc. Three were also analyzed for platinum and palladium and gave the following results for palladium of 0.12 g/t, 0.28g/t and 0.31 g/t and for platinum 0.16 g/t, 0.37 g/t and 0.12 g/t. The peridotite graded 0.02% Cu and 0.224% Ni over the 11.2 meter interval (Exact width not known at this time).

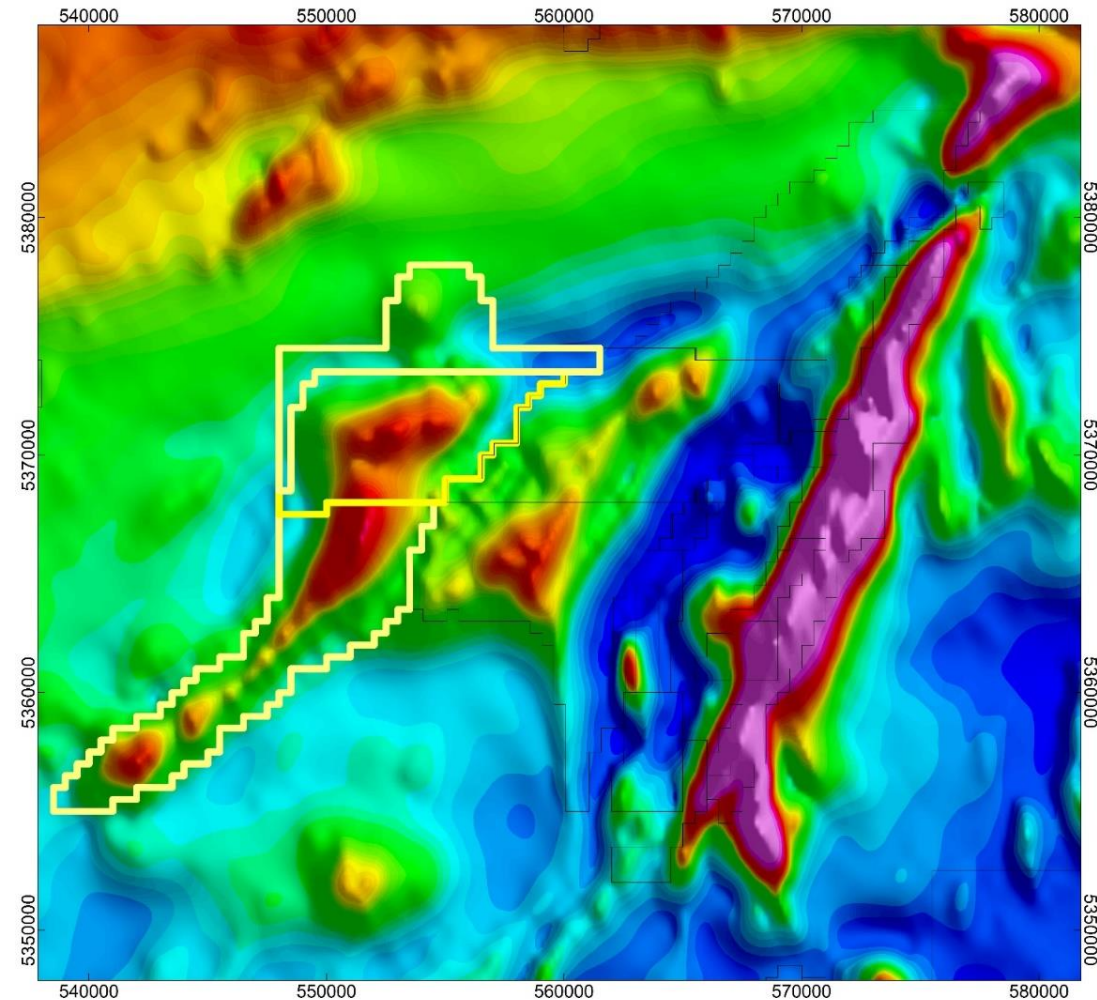
Laverlochere
Property (Noble
Mineral
Exploration)

Lorraine Mine: Produced
600,000 tonnes 0.47%
Nickel, 1.08% Copper,
6.86 g/t Silver and 0.67
g/t Gold

Lac Kelly: 1.4 million
tonnes of 0.7% Copper,
0.7 Nickel, 0.33 g/t
Platinum+Palladium

Blondeau: 227,000
tonnes grading
0.45% Copper and
0.45% Nickel

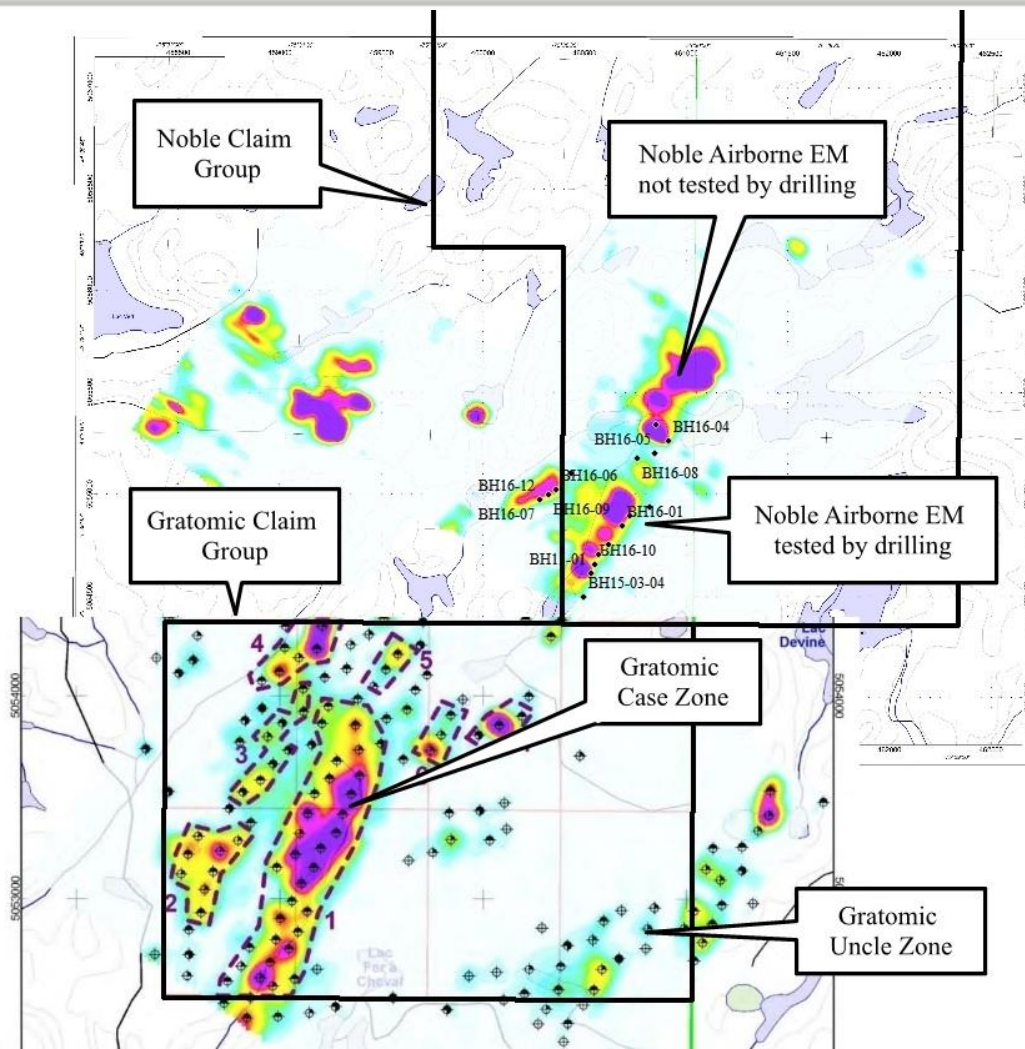
1 km
UTM 638873, 5240802 Zone: 17
T: 136 494 GEO 47.306 N, 79.1628 W



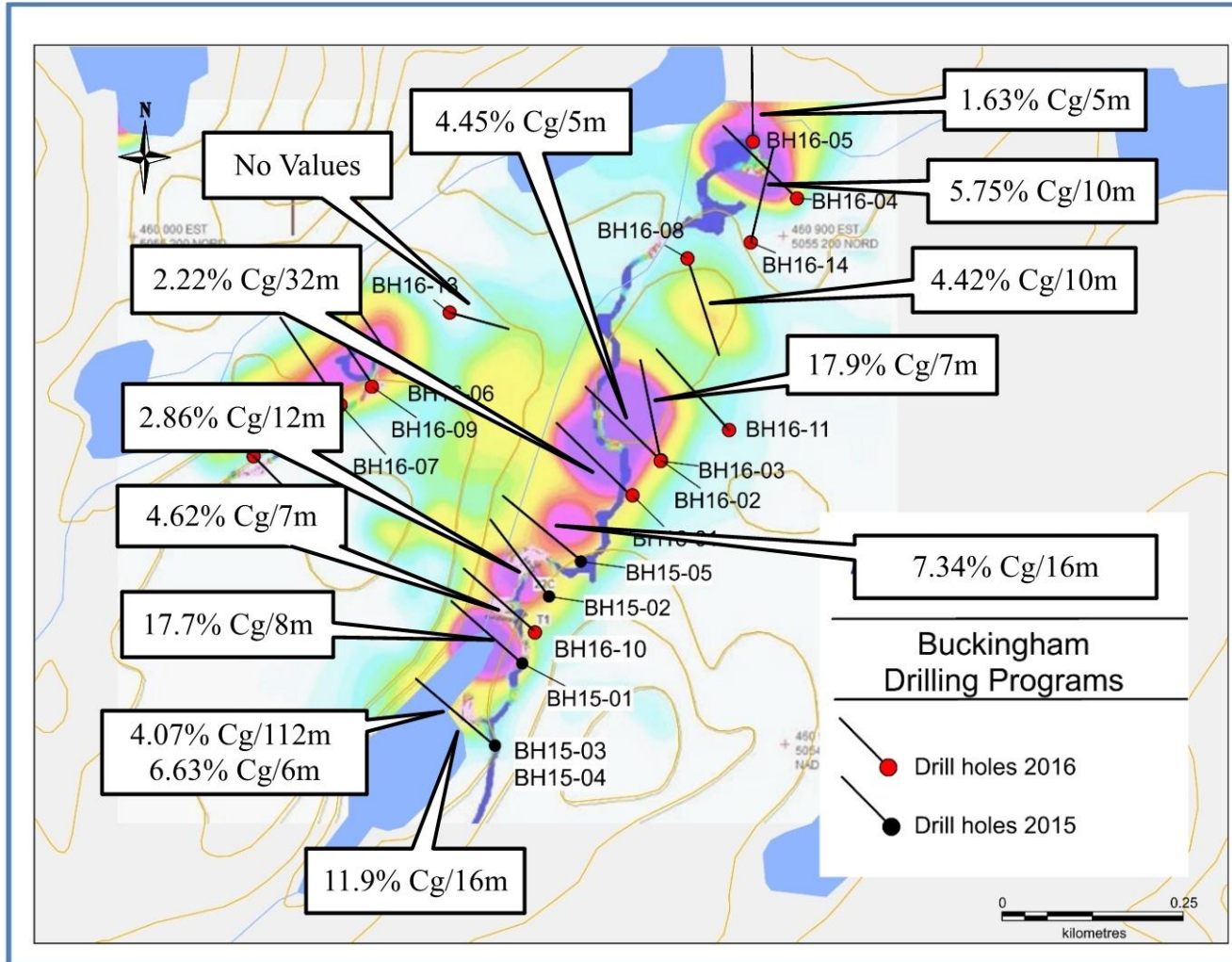
- 576 Mining Claims
- 14,400 hectares
- Unexplored
- 25 km strike length
- VMS Gold Target
- Airborne EM/Mag Q2 2024

BUCKINGHAM GRAPHITE PROJECT (Outaouais Quebec)

TSXV : NOB
FWB : NB7
OTCQB : NLPXF



BUCKINGHAM 2015 & 2016 DRILL LOCATIONS



ASHBURTON 2015 BUCKINGHAM DRILL RESULTS

Hole ID	From (m)	To (m)	Length (m)*	Cg (wt.%)	Hosting Rock
BH15-01	3.7	15.0	11.3	1.81	Marble
	70.0	106.0	36.0	2.51	Marble, gneiss
<i>including</i>	<i>73.0</i>	<i>85.7</i>	12.7	4.16	Marble
	175.0	203.8	28.8	8.36	Marble
<i>including</i>	<i>185.0</i>	<i>193.0</i>	8.0	17.70	Marble
BH15-02	162.0	174.0	12.0	2.07	Phlogopite garnet gneiss, quartzite
	187.7	200.0	12.3	2.86	Gneiss
BH15-03	30.0	54.0	24.0	3.05	Marble
<i>including</i>	<i>46.0</i>	<i>52.0</i>	6.0	6.63	Marble
	112.0	224.0	112.0**	4.07	Marble, gneiss
<i>including</i>	<i>166.0</i>	<i>173.0</i>	7.0	11.20	Marble
<i>including</i>	<i>198.0</i>	<i>203.0</i>	5.0	8.45	Marble
BH15-04	51.0	67.0	16.0	11.90	Marble, gneiss
BH15-05	68.0	81.0	13.0	2.43	Phlogopite and garnet gneiss
	109.0	197.0	88.0*	3.29	Marble, gneiss
<i>including</i>	<i>144</i>	<i>160</i>	16	7.34	Marble

*the mineralized lengths do not represent true thickness as the attitude of the marble units are not defined at this time.

**the intercept was not totally assayed: there are no values from 162-169.4 m and 174.5-179 m

ASHBURTON 2016 BUCKINGHAM DRILL RESULTS

Hole ID	From (m)	To (m)	Length (m)	Cg (wt %)	Hosting Rock
BH16-01	108	129	21	2.48	Marble, garnet gneiss
	146	177	32	2.22	Gneiss, marble
	191	200	9	2.62	Marble
BH16-02	69	74	5	4.45	Marble
	124	149	25	3.24	Gneiss, marble
BH16-03	87	101	14	4.33	Marble
	176	200	24	6.28	Marble, gneiss
<i>including</i>	177	184	7	17.90	
BH16-04	41	49	8	2.75	Marble, gneiss
	94	122	28	3.88	Gneiss, ductile zone and marble
<i>including</i>	106	116	10	5.75	Ductile zone and marble
BH16-05	29	34	5	1.63	Marble
	165	170	5	1.4	Marble
BH16-06	2	72	70	5.18	Quartzite, marble, gneiss
<i>including</i>	11	25	14	12.52	Marble
BH16-08	91	101	10	4.42	Marble
	113	130	18	3.20	Marble
	148	184	36	3.34	Marble
BH16-10	48	87	39	2.66	Marble, gneiss
<i>including</i>	80	87	7	4.62	Gneiss
	104	114	10	3.98	Gneiss, marble
BH16-12	4.5	11	6.5	3.55	Gneiss, calc-silicate rocks
BH16-14	111	122	11	3.54	Calc silicate rocks, gneiss

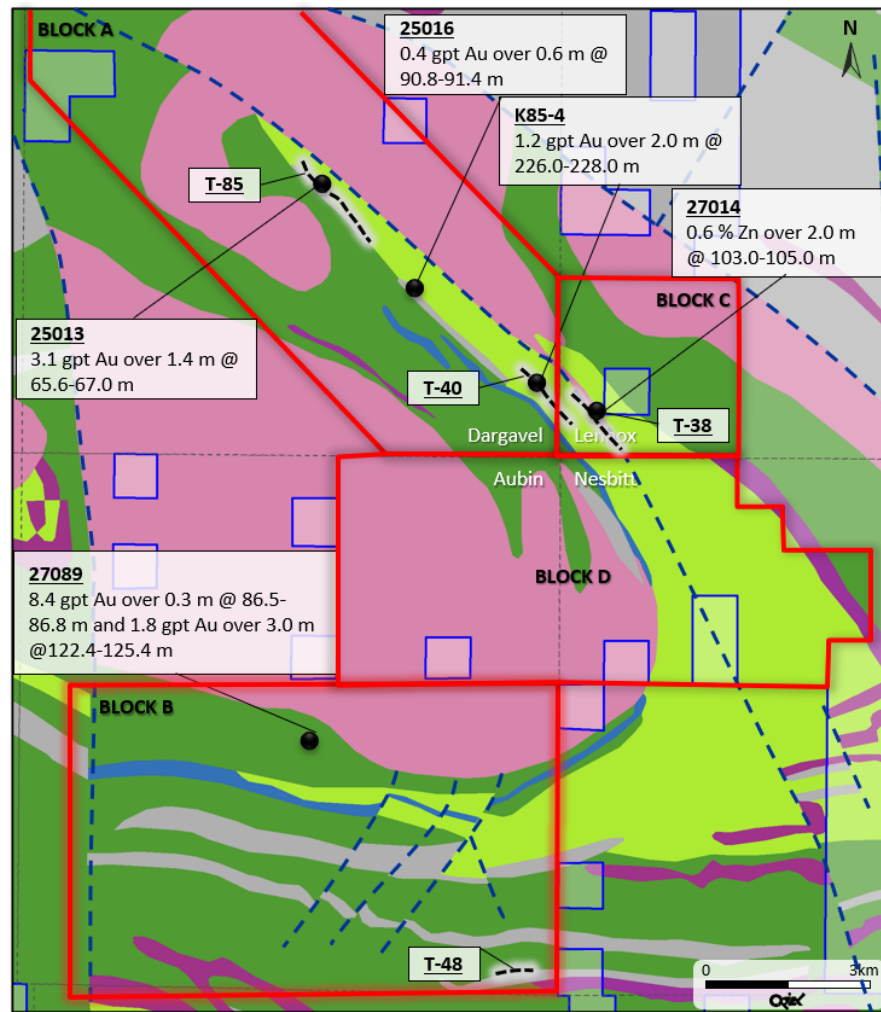
- Ashburton Ventures 2015 and 2016 drill campaigns for a total of 3,782m
- 20 KG Bulk Sample subjected to flotation testing for Graphite
- Head Grade at 20.7% Cg
- 94.8% purity
- 32% large flake (+65 mesh) to Jumbo (+28 mesh)
- Purity in large fractions 94.8-96.1%
- Follow up drilling in Q2 2024

*the mineralized lengths do not represent true thickness as the attitude of marble units are not defined at this time.
Nov 2023

BUCKINGHAM DRILL CORE

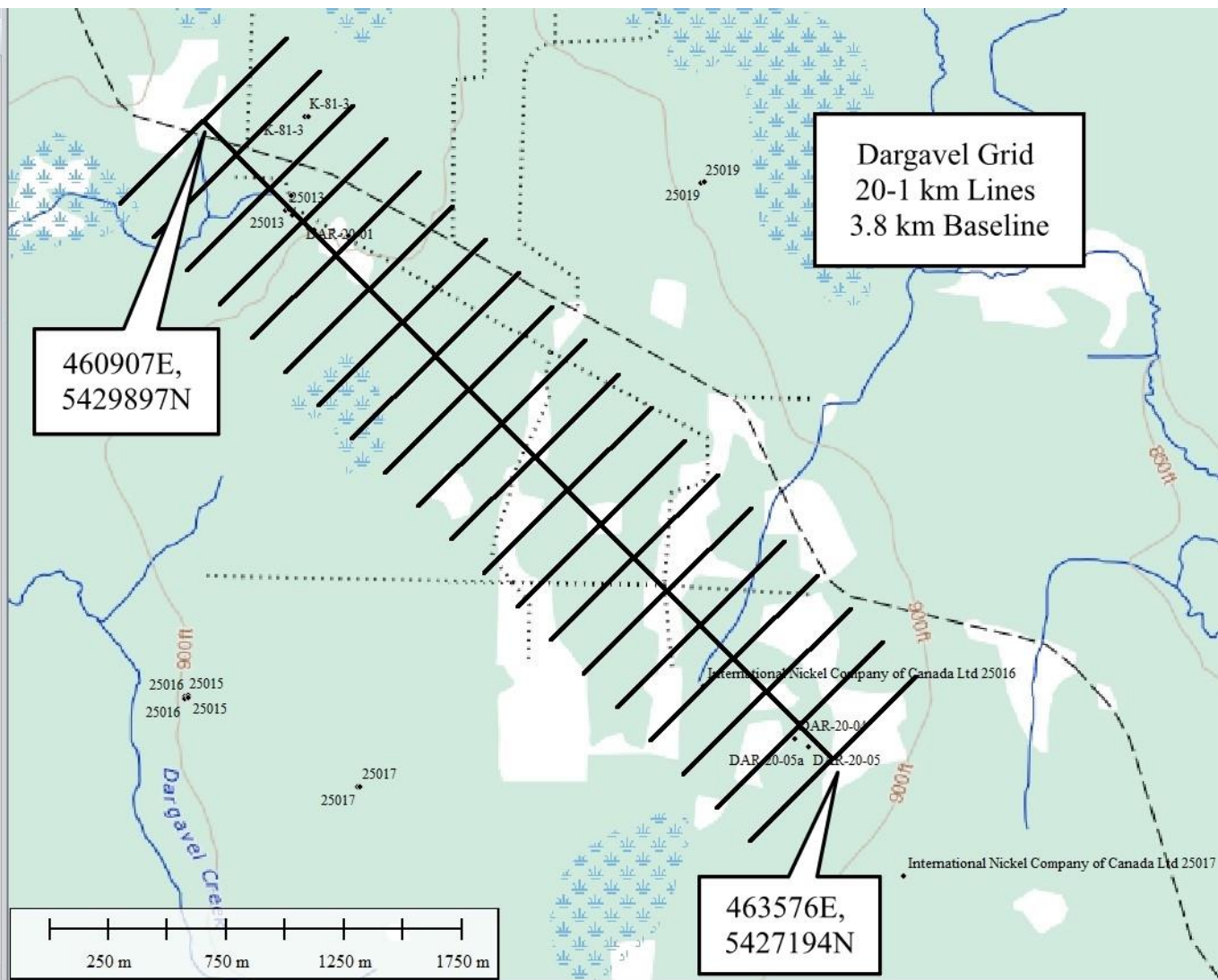
TSXV: NOB
FWB: NB7
OTCQB: NLPXF





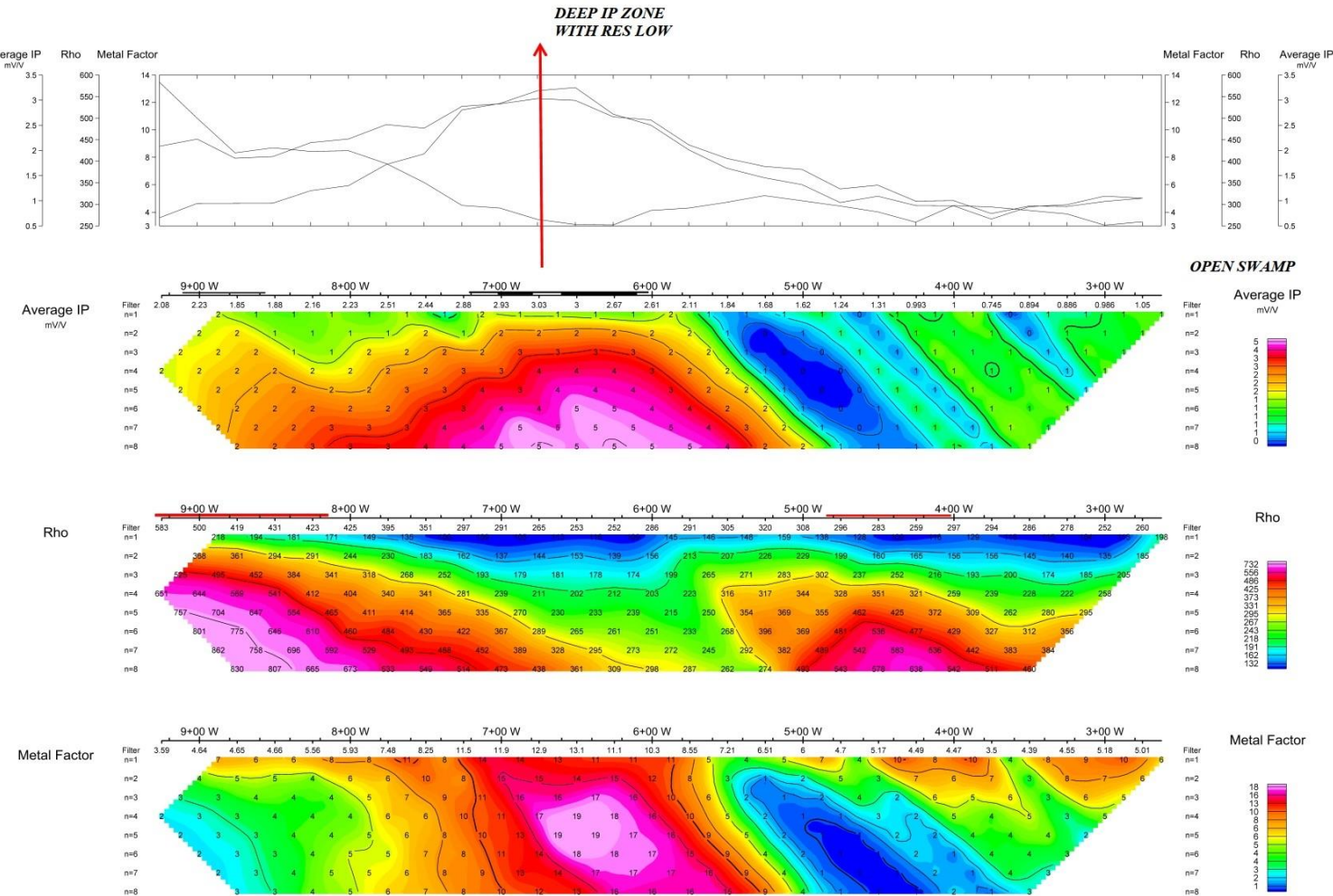
DARGAVEL GRID FOR IP SURVEY COMPLETED FALL 2021

TSXV: NOB
FWB: NB7
OTCQB: NLPXF

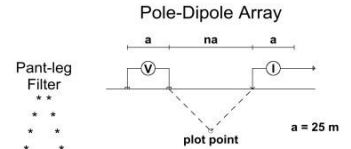


DARGAVEL IP SURVEY RESULTS (Line 600MS)

TSXV: NOB
FWB: NB7
OTCQB: NLPXF



Pseudo Section Plot LINE 600MS

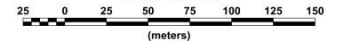


Logarithmic Contours 1, 1.5, 2, 3, 5, 7.5, 10,...

INTERPRETATION

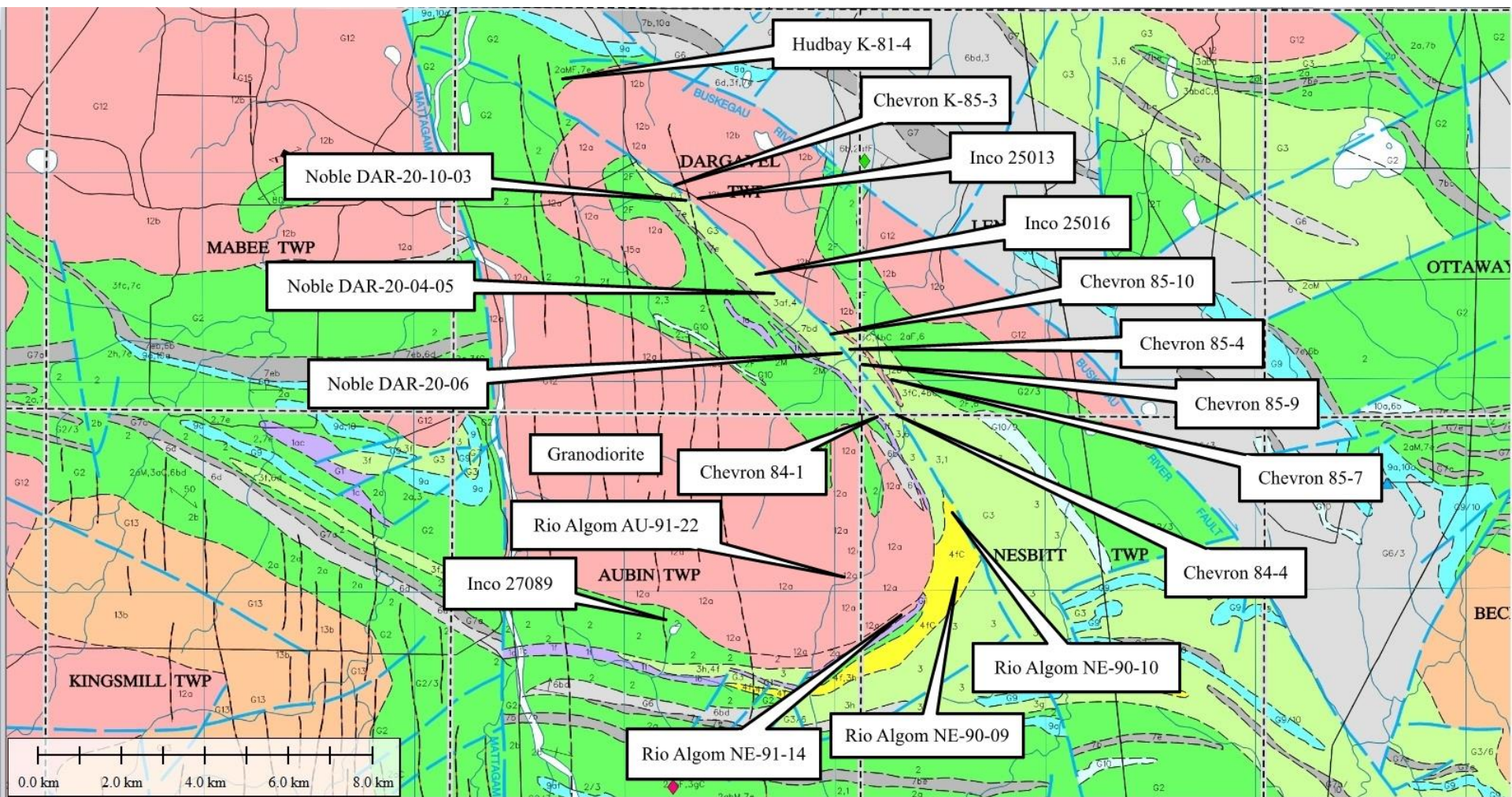
- Strong increase in polarization accompanied by marked decrease in resistivity.
- Well defined increase in polarization without marked resistivity decrease.
- Poorly defined polarization increase with no resistivity signature.
- Low resistivity feature.
- High resistivity feature.

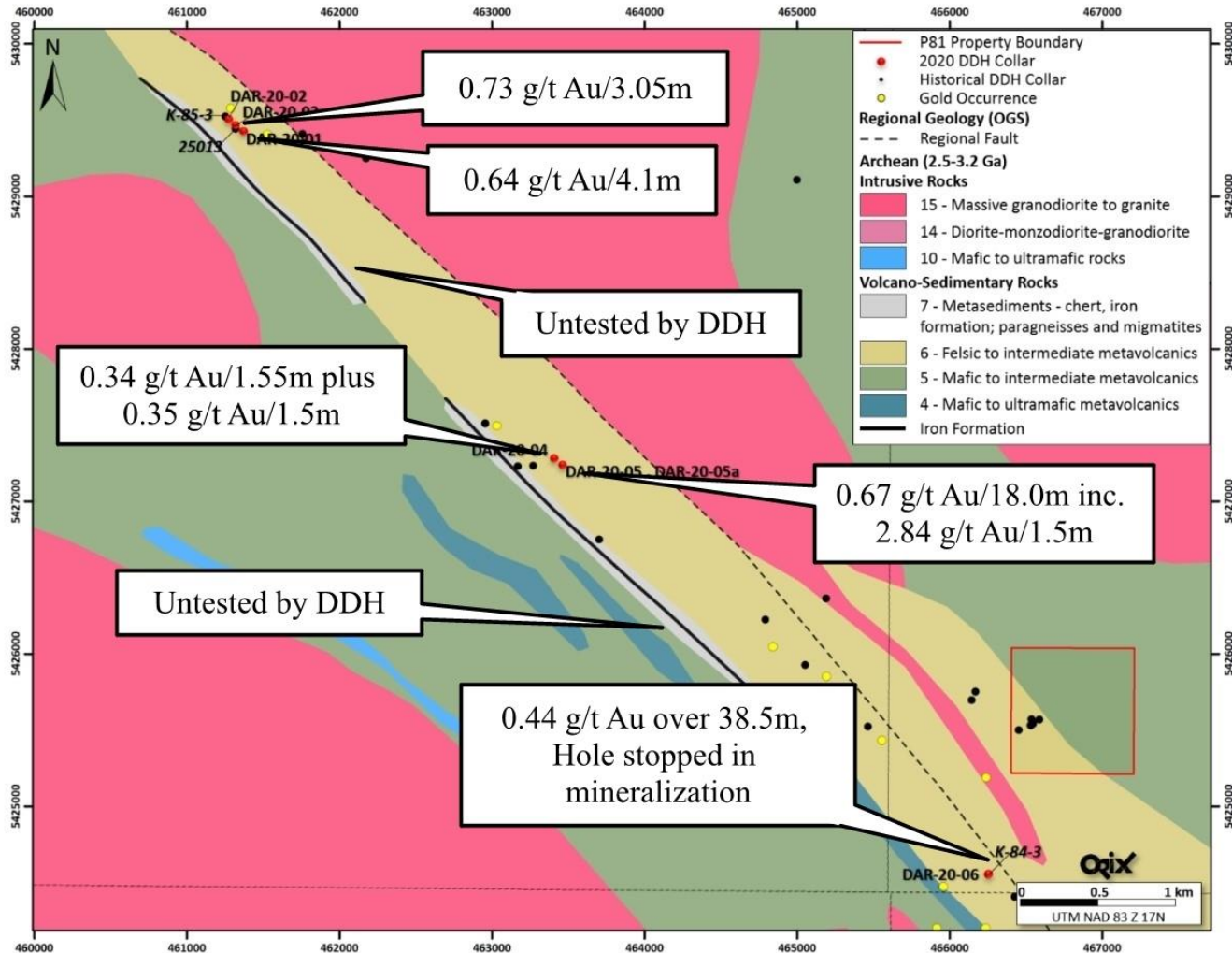
Scale 1:2500



NOBEL MINERALS INC.
INDUCED POLARIZATION SURVEY
DARGAVEL PROPERTY
LINE 600MS
Date: 21/09/2021
Interpretation: JCGRANT

DARGAVEL GOLD TREND HISTORIC & NOBLE DRILL HOLES





DARGAVEL 2022 DRILL CAMPAIGN

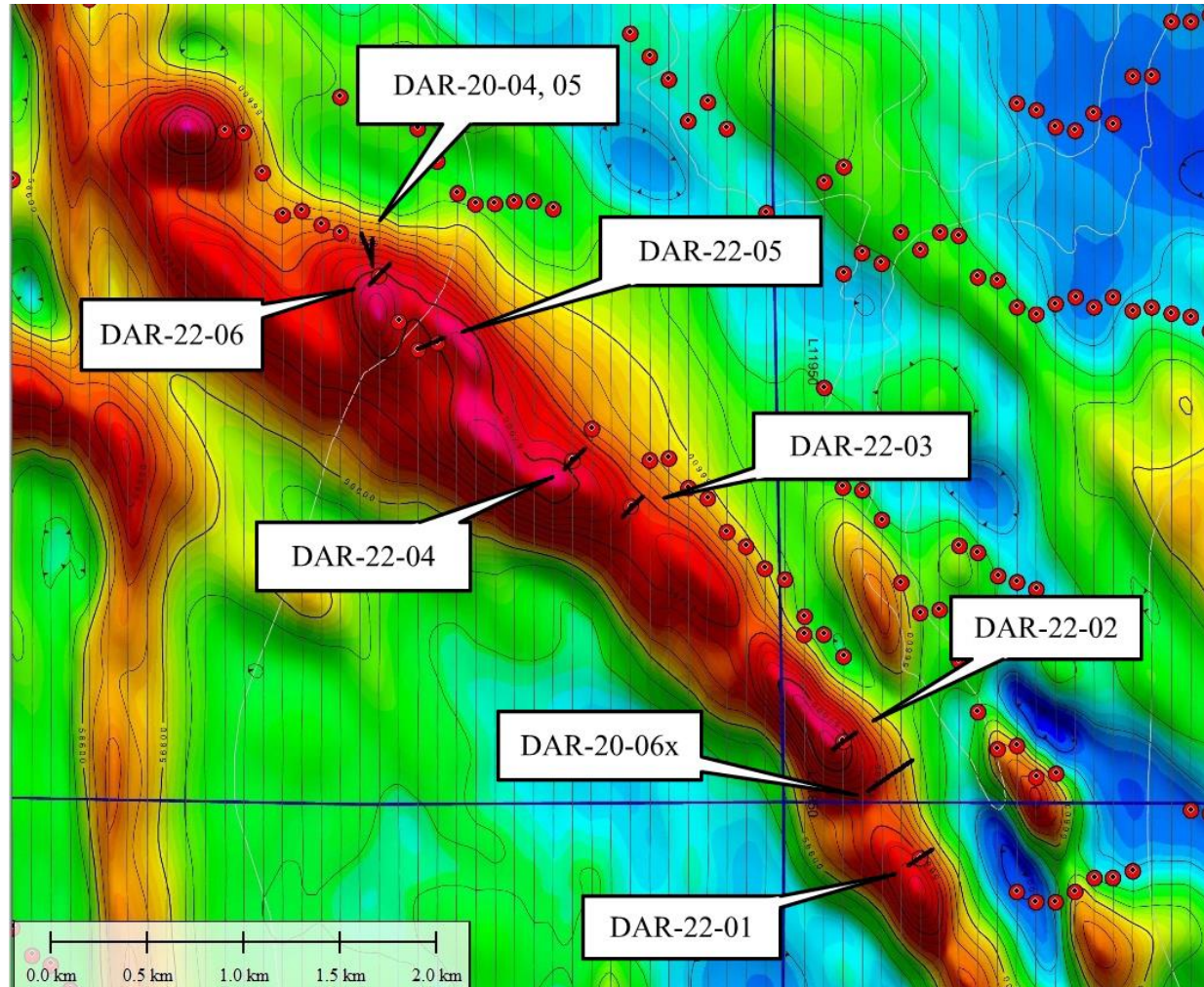
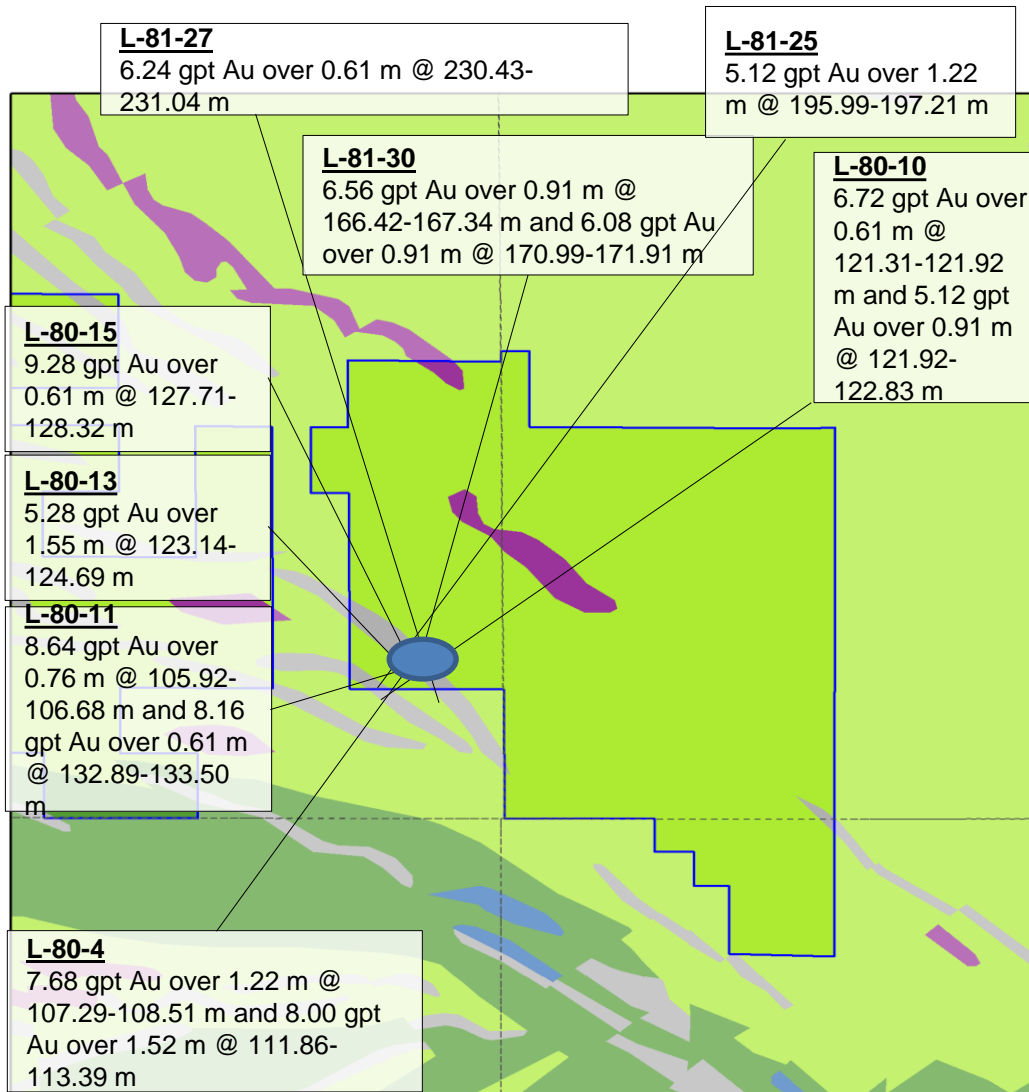


Table 4: Assay Highlights from 2020 Drilling Program

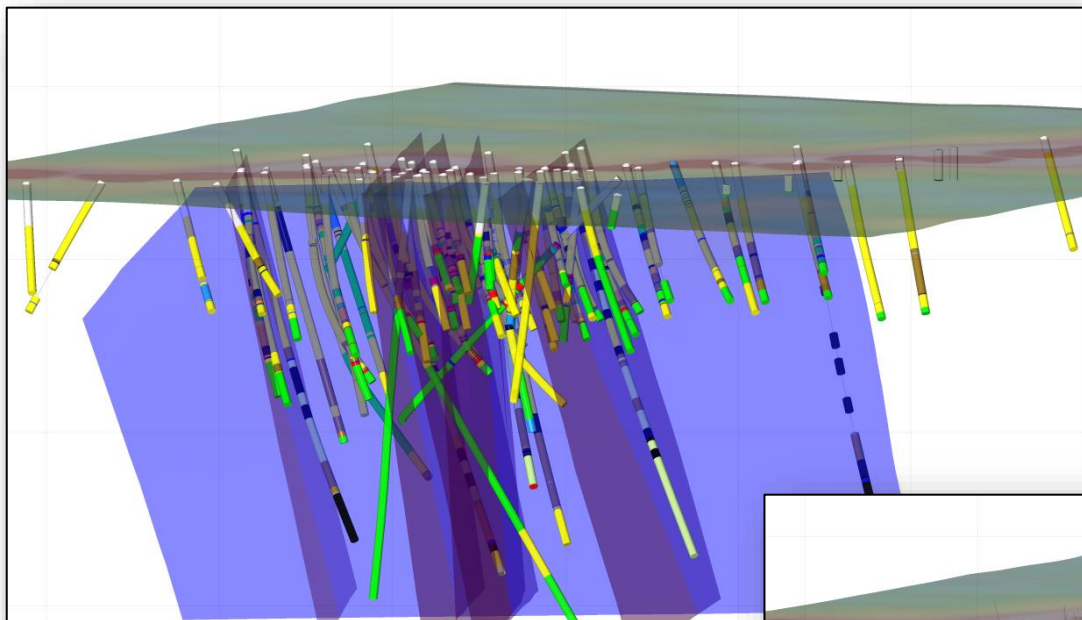
DDH	Assay (g/t)	From (m)	To (m)	Interval (m)
DAR-20-01	0.73 Au	64.25	67.30	3.05
DAR-20-03	0.64 Au	83.40	87.50	4.10
DAR-20-04	0.34 Au	74.45	76.00	1.55
	0.35 Au	139.00	140.50	1.50
DAR-20-05	0.67 Au	72.50	90.50	18.00
<i>Including</i>	2.84 Au	74.00	75.50	1.50
	2.15 Au	84.50	86.00	1.50
AND	2.13 Au, 0.93 Pd and 0.58 Pt	155.00	156.50	1.50
DAR-20-06	2.41 Au	396.50	398.00	1.50
	0.52 Au	415.20	435.00	19.80

LUCAS GOLD TARGET - GEOLOGY



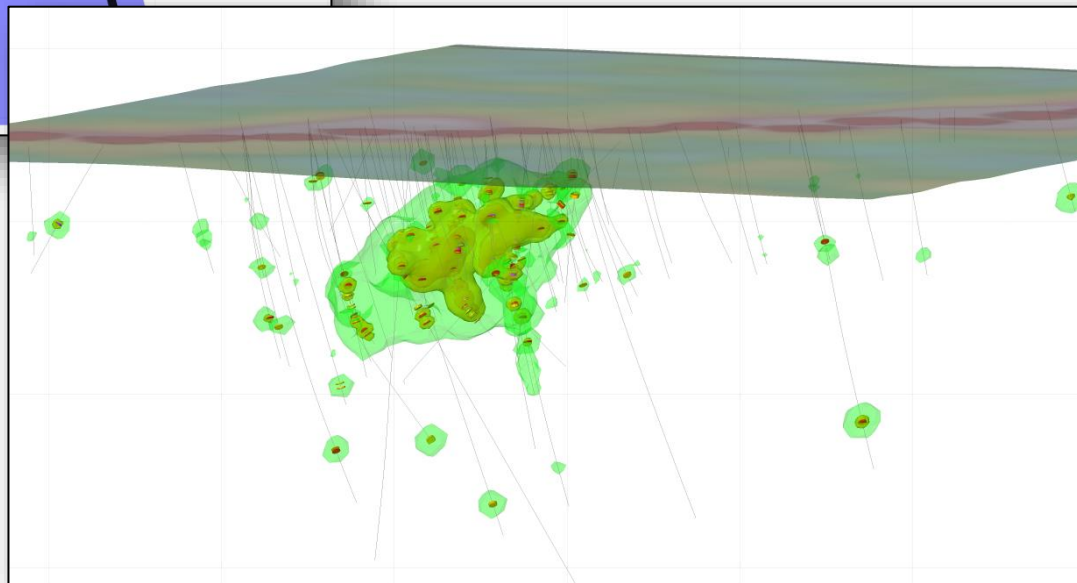
LUCAS 2018 DRILL CAMPAIGN RESULTS

BHID	Au Assay Highlights	<i>including</i>
LUC-18-07	0.87 gpt over 6.50m	<i>1.41 gpt over 3.50m</i>
LUC-18-08	0.24 gpt over 4.30m	
LUC-18-09	0.59 gpt over 1.70m	
LUC-18-10	None	
LUC-18-11	1.10 gpt over 30.90m	<i>1.20 gpt over 7.00m; 4.33 gpt over 5.15m</i>
LUC-18-12	None	
LUC-18-13	1.15 gpt over 23.30m	<i>1.72 gpt over 8.05m</i>
LUC-18-14	1.70 gpt over 22.60m	<i>2.43 gpt over 15.10m</i>
LUC-18-15	0.42 gpt over 20.25m	<i>1.40 gpt over 3.75m</i>
LUC-18-16	0.44 gpt over 1.85m	
LUC-18-17	0.80 gpt over 3.55m	
LUC-18-18	None	
LUC-18-19	1.27 gpt over 35.00m	<i>1.04 gpt over 14.00m; 2.55 gpt over 10.00m</i>
LUC-18-20	1.42 gpt over 5.00m	
	3.10 gpt over 9.00m	<i>4.82 gpt over 4.60m</i>
LUC-18-21	1.84 gpt over 9.50m	<i>3.21 gpt over 3.00m</i>
	1.60 gpt over 25.75m	<i>3.05 gpt over 7.25m; 1.83 gpt over 8.00;</i>
	0.95 gpt over 6.80m	



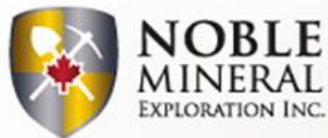
- All historical drillholes compiled have been consolidated using new lithology and assays legends
- Grade shells created to help understanding structural controls

- Overall mineralization plunging to the NW, but with high grade veining almost flat
- Stacked high grade veins need to be drilled with steep holes



PROJECT GENERATOR FOCUSED ON BATTERY AND CRITICAL MINERALS

- **Project 81** ~25,000ha in the Timmins-Cochrane area of Northern Ontario, for which it holds the mineral rights for VMS and Gold available for option;
- **Carnegie/Kidd 2** – Multiple VMS targets for drilling Winter 2023 located 3-4 kms north of the Kidd Creek Mine;
- **Dargavel Gold Trend** – 7 kms strike length with follow up drilling underway;
- **Lucas Gold** – 17 km strike length with gold results reported;
- **Nickel-Cobalt/VMS/Gold** ~11,000ha in the Timmins-Cochrane area of Northern Ontario, for which it holds the mineral rights optioned to Canada Nickel Company;
- **Nagagami River Carbonatite** ~4,845ha Niobium and Rare Earth prospect near Hearst in Northern Ontario to be drilled in 2022;
- **Buckingham Graphite** in the Outaouais area of Western Quebec with large flake recoverable graphite with infill drilling proposed for 2024;
- **Cere-Villebon** ~483ha near Val d’Or, Quebec with historic Copper-Nickel-PGM results on the property drilling in 2023;
- **Laverlochere** ~518ha near Rouyn-Noranda, Quebec follow up work on Nickel-Copper-Cobalt-Gold and PGM results from 1960’s;
- **Central Newfoundland** ~14,400ha untested VMS/Copper/Gold anomaly with a 25km strike length with airborne EM and Mag for 2024
- **Securities portfolio:**
 - **2.9mm Canada Nickel Shares**
 - **18mm Spruce Ridge Shares**
 - **1.4mm Go Metals shares**
- **Well respected financial partner and technical partners applying state of the art technology to find metal in the ground** - geoscience, geophysics and gravity surveys to identify and prioritize gold, copper, lead, zinc, niobium and rare earths
- **Possible discoveries in the near future** – Multiple Diamond Drilling Programs throughout Winter-Spring 2023-2024



**NOBLE
MINERAL**
EXPLORATION INC.

NOBLE MINERAL EXPLORATION SHARE CAPITAL

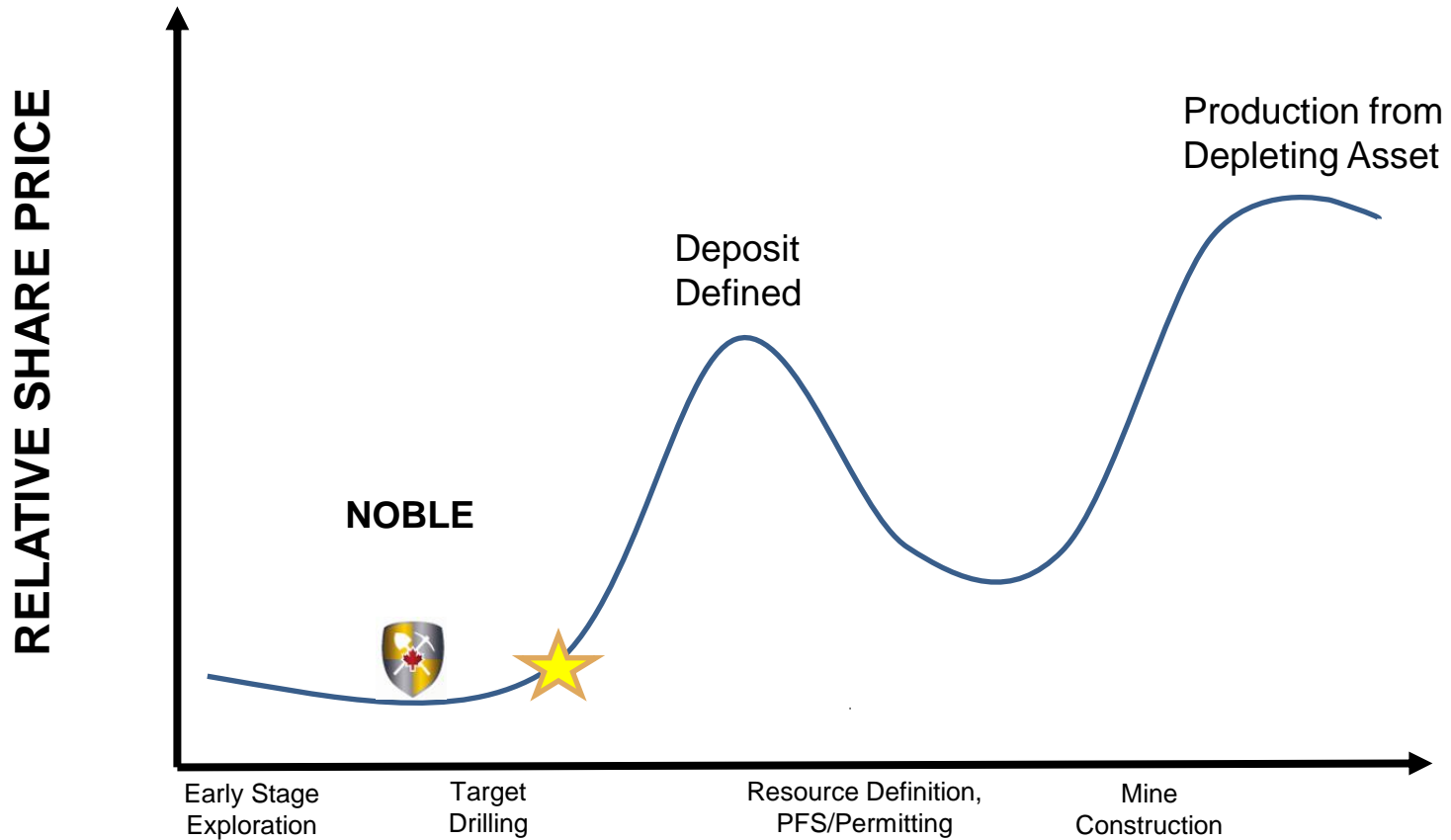
TSXV: NOB
FWB: NB7
OTCQB: NLPXF

Listings:	TSX.V: NOB (Toronto) FWB: NB7 (Frankfurt) OTCQB: NLPXF (US)
Common Shares:	226,358,988
Warrants (\$0.11- 0.175):	3,775,000
Stock Options/RSU's:	5,490,000
Fully Diluted:	235,973,988
Recent Share Price:	\$0.05
Market Capitalization:	\$11.3 million
52 Week High - Low:	\$0.08 - 0.025

Potential Capital Inflows:

Warrants	\$ 489,500
<i>Weighted Average Exercise Price</i>	\$ 0.12
Options	\$ 373,500
<i>Weighted Average Exercise Price</i>	\$ 0.11
Total	\$ 862,500

THE DISCOVERY CURVE





**NOBLE
MINERAL**
EXPLORATION INC.

Management:

H. Vance White, President & Chief Executive Officer

Wayne Holmstead P Geo (ON) Exploration Manager

Mitchell E Lavery P. Geo. and Isabelle Robillard P.Geo. M Sc. QP for Quebec Content

Corinna de Beer, Corporate Communications

**2500 – 120 Adelaide St. W
Toronto, Ontario
Canada M5H 1T1**

**Phone: 416-214-2250 | Email: info@noblemineralexploration.com | Fax: 416-367-1954
www.noblemineralexploration.com**

**TSX.V : NOB
FWB : NB7
OTCQB : NLPXF**