

December 2018



**NOBLE  
MINERAL**  
EXPLORATION INC.

## **Project 81**

# **Drill Ready Geophysical Targets & Trends**

## **Calder, Lennox & Bradburn Townships**

**Timmins-Cochrane  
Northern Ontario  
Canada**

TSX.V:NOB  
FWB:NB7  
OTC.PK:NLPXF

**Certain statements contained in this presentation that are forward-looking in nature are based on the current beliefs and assumptions of the Company's management.**

**When used in this presentation, the words "may," "could," "should," "anticipate," "believe," "estimate," "expect," "intend," "plan," "predict," and similar expressions and their variants may be used to identify forward-looking statements. Such statements are valid only as of today, and we disclaim any obligation to update this information.**

**These statements are subject to known and unknown risks and uncertainties that may cause actual future experience and results to differ materially from the statements made. These statements are based on our current beliefs and expectations as to such future outcomes.**

- Exploration activities were conducted on Noble's Project 81 prior to the adoption of National Instrument 43-101 ("NI 43-101"), as well as more recently when NI 43-101 was in force.
- Historical Exploration results that pre-date the adoption of NI 43-101 do not comply with current definitions prescribed by NI 43-101 or the *Canadian Institute of Mining*, and are disclosed only as indications of the presence of nickel, VMS, gold and other minerals. The historical models and data sets used to prepare these historical estimates are not available to Noble, nor have they been verified under current standards. In order to verify these resources as current estimates, Noble will have to conduct additional exploration work to verify the historic data. An independent qualified person for the purposes of NI 43-101 has not done sufficient work to classify these historical estimates as a current mineral resources or mineral reserves and Noble is not treating the historical estimates as a current mineral resources or mineral reserves.
- For information concerning the historical results of exploration activities conducted on Project 81, readers are encouraged to review "NI 43-101 Technical Report on the Project 81 Area", a technical report prepared for the Company by Ulrich Kretschmar, Phd, PGeo., that is available on the Company's website (<http://www.noblemineralexploration.com>) and under the Company's profile on SEDAR ([www.sedar.com](http://www.sedar.com)). This is the most recent technical report prepared in respect of the Property, in accordance with *National Instrument 43-101* (NI 43-101).
- Randy S.C. Singh, P.Geo. (ON), P.Eng (ON), Vice President, Exploration & Project Development for Noble Mineral Exploration Inc., is a "qualified person" as defined in NI 43-101, has reviewed and approved the disclosure of mineral exploration information contained in this presentation.

# LENNOX/CALDER/BRADBURN PROPERTY - PRE AMBLE









- Lennox Twp Property of Project 81 is ~10,700 Ha of contiguous Patented & Staked Mineral Claims in Lennox Twp (2,400 Ha) and Calder & Bradburn Twps. – (~8,300 Ha) located approximately 33 km north of the world class Kidd Creek Mine celebrating its 50<sup>th</sup> year of production.
- Modern Airborne ElectroMagnetic (EM) & Magnetic (MAG) Geophysical Surveys were completed in 2012 with follow up Orientation/Definition Airborne EM & Mag surveys in 2017
- There are in excess of a thousand anomalous responses detected with over 200 conductor picks identified, resulting in 21 anomalous trends that are interpreted to represent bedrock conductors, over the northern 8 townships including the Lennox/Calder/Bradburn Property.
- In addition there are 5 Priority #1 trends and 12 Priority #2 trends that require immediate follow-up exploration and refinement in the townships.
- Priority #1 trends are described as discrete, well-defined bedrock conductors with good strike length.
- Priority #2 trends are described as good, bedrock response with good strike length.
- This presentation looks at 4 drill-ready targets throughout the project area.

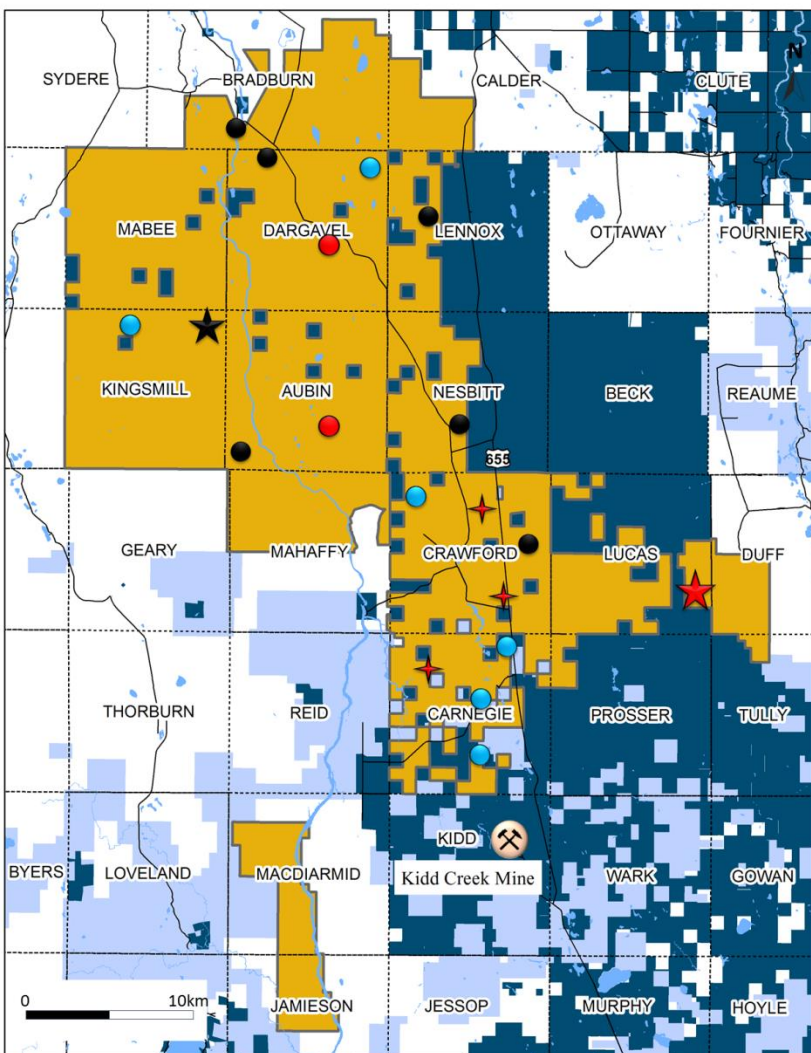
# NOBLE PROJECT 81 79,000 HECTARES LAND PACKAGE DRILL READY TARGETS

**Project 81's Area  
Play is a ~79,000 Ha  
Land Package**

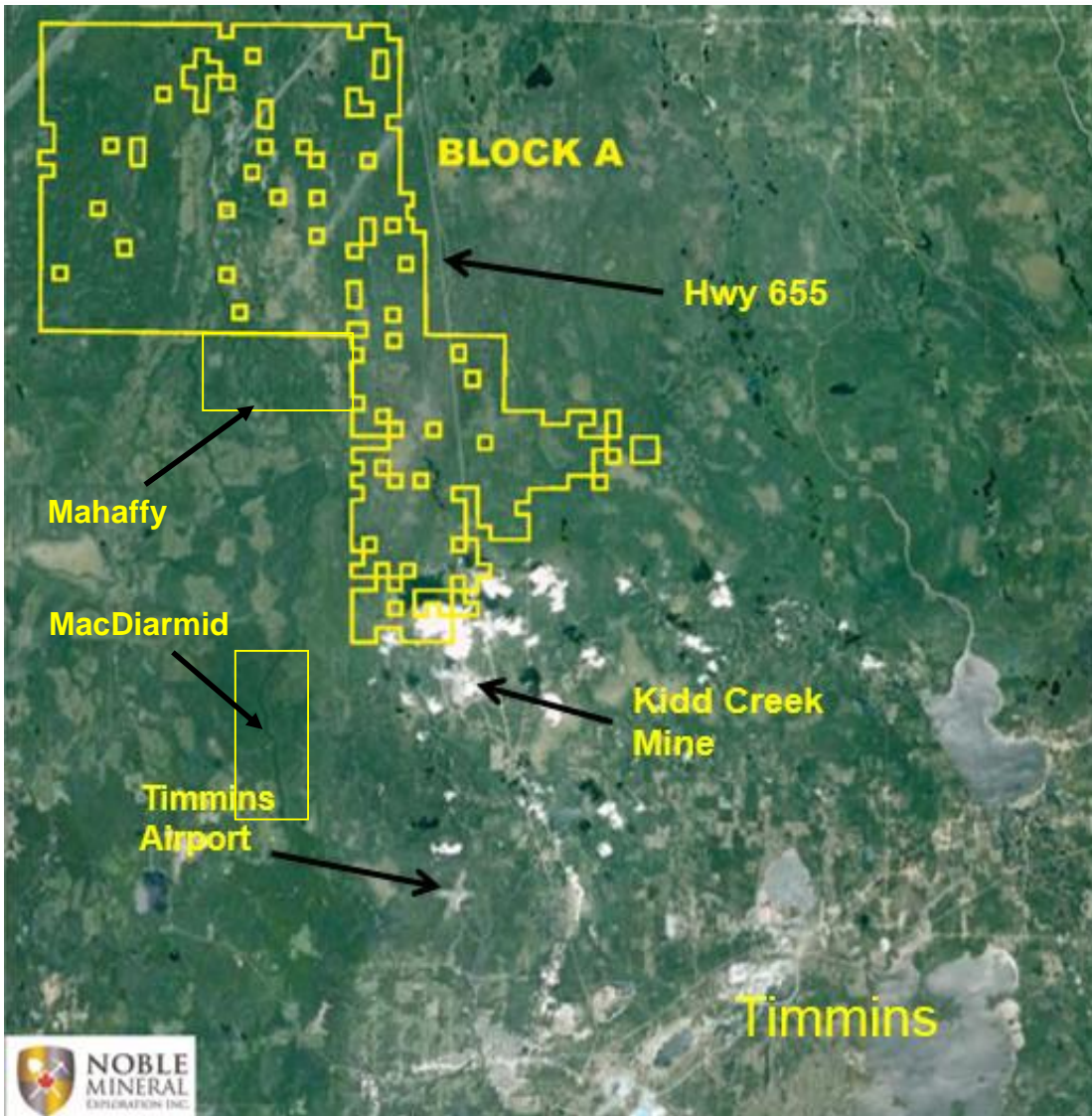
**Located  
approximately 30 km  
north of Timmins  
world famous for  
>75mm oz. of Au  
production**

**2-3 km north of the  
world class Kidd  
Creek Mine  
celebrating its 52<sup>nd</sup>  
year of continuous  
production having  
produced >150mm  
tonnes of ore**

-  Drill Indicated Ni Targets
-  Drill Indicated Au Targets
-  Gold Targets
-  VMS Targets
-  Lucas Au Zone
-  Kingsmill Ni-Co Deposit
-  Noble P81 Property Boundary
-  Other Claims
-  Other Patents

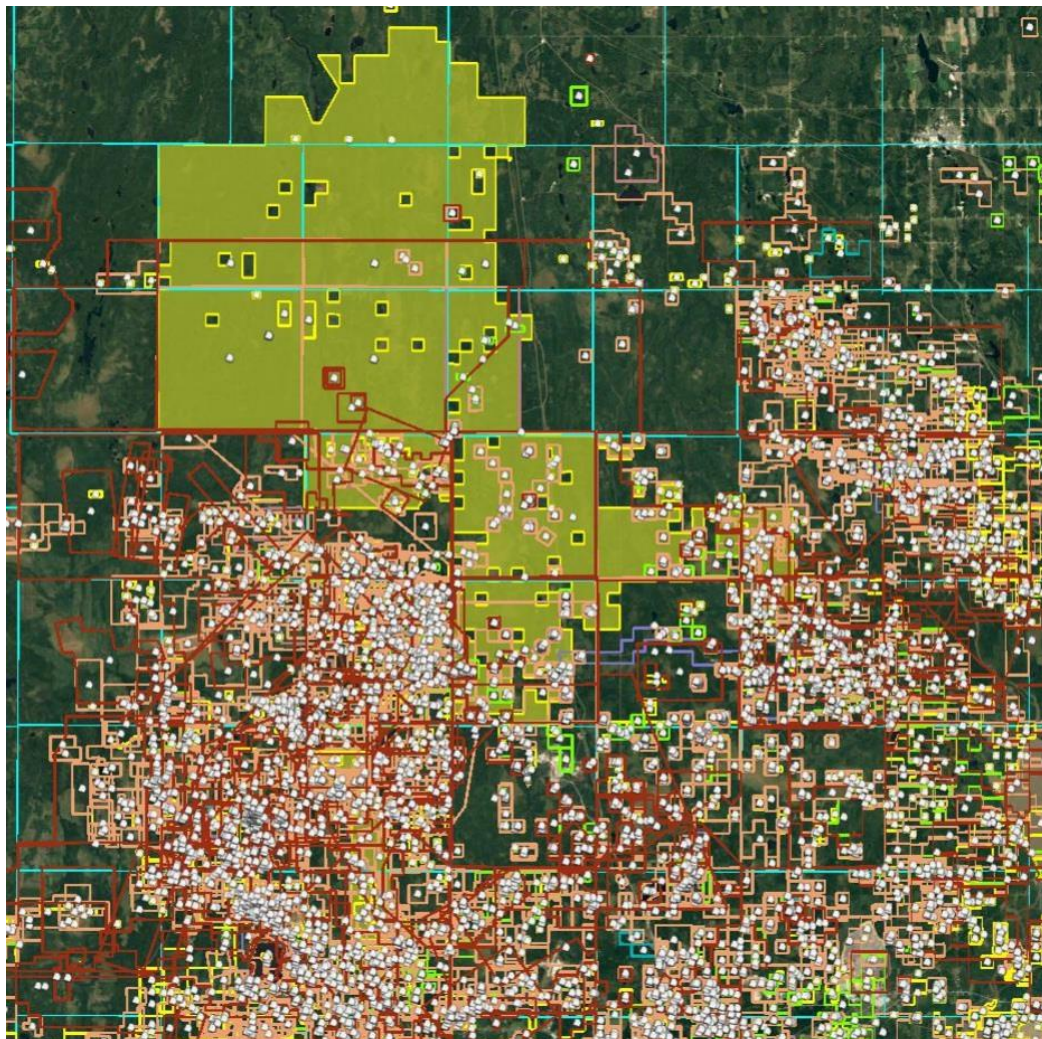


# GOOGLE MAP SHOWING REGIONAL INFRASTRUCTURE



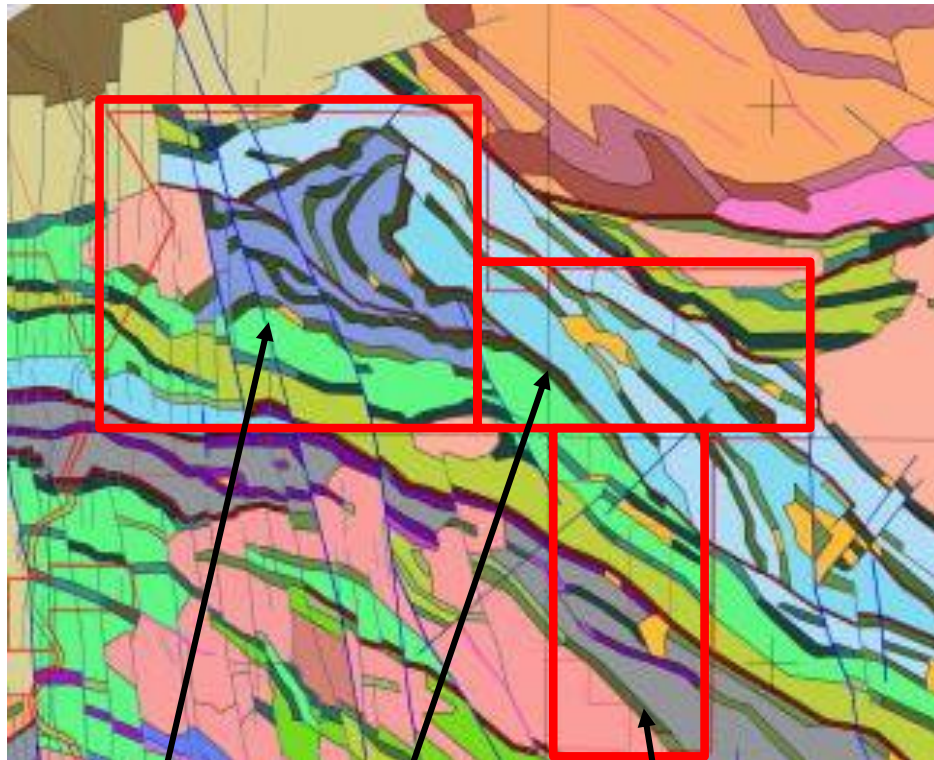
- Significant industry services, supplies and infrastructure in place in Timmins with access by paved Highway 655
- Ample access to power and water
- MoU signed with First Nations
- Drill programs proposed for fall/winter 2017-2018

# GOOGLE MAP SHOWING HISTORICAL EXPLORATION ACTIVITIES



- Based on filings with the MNDM, the lack of exploration is very evident within the Project 81 area
- White dots indicate the location of drilling information
- Noble and JV Drill programs proposed for fall/winter 2018-2019

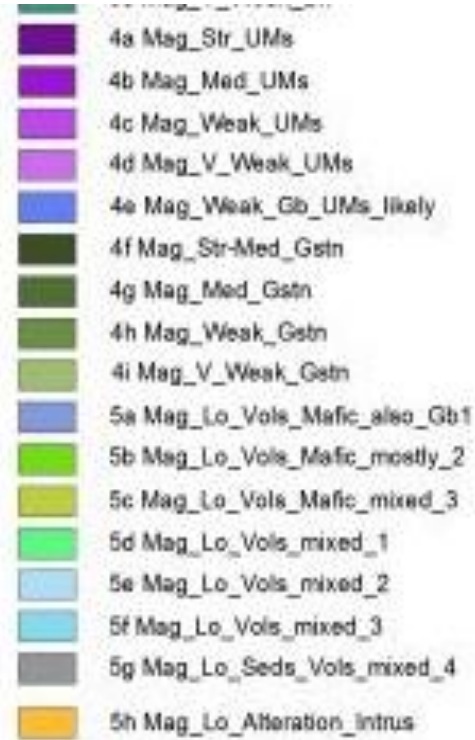
# CALDER, LENNOX & BRADBURN TOWNSHIPS Geology



Bradburn

Calder

Lennox



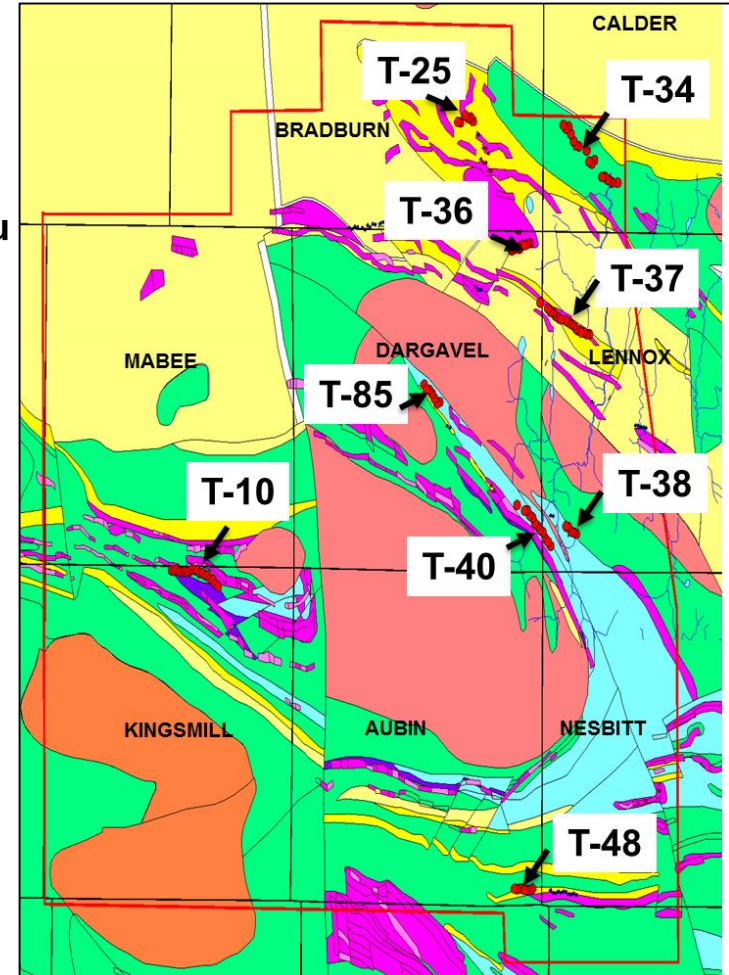
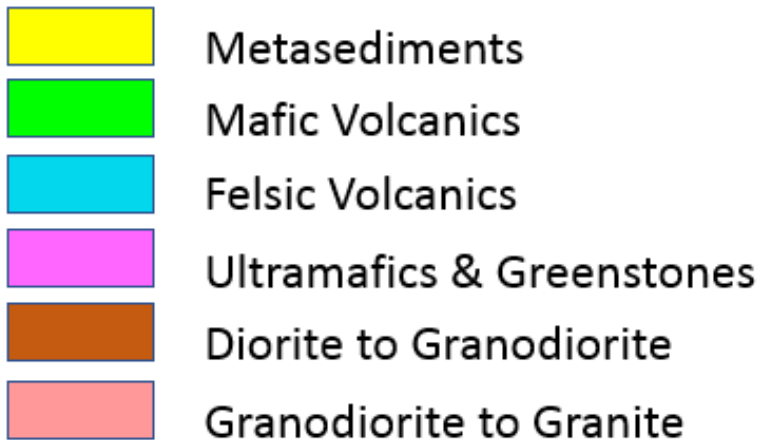


# PROJECT 81

## (Northern Eight Townships)

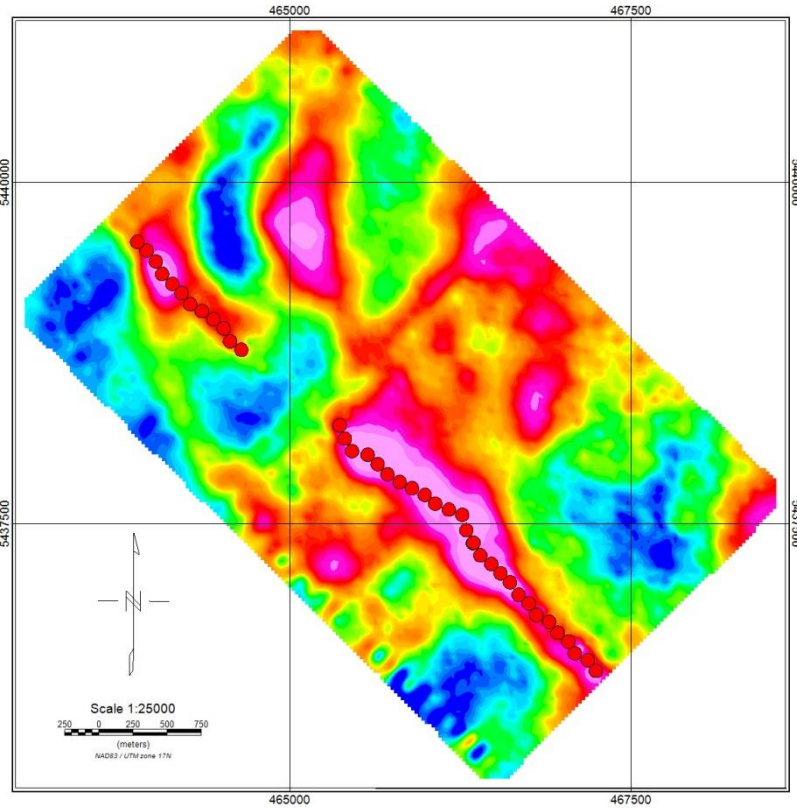
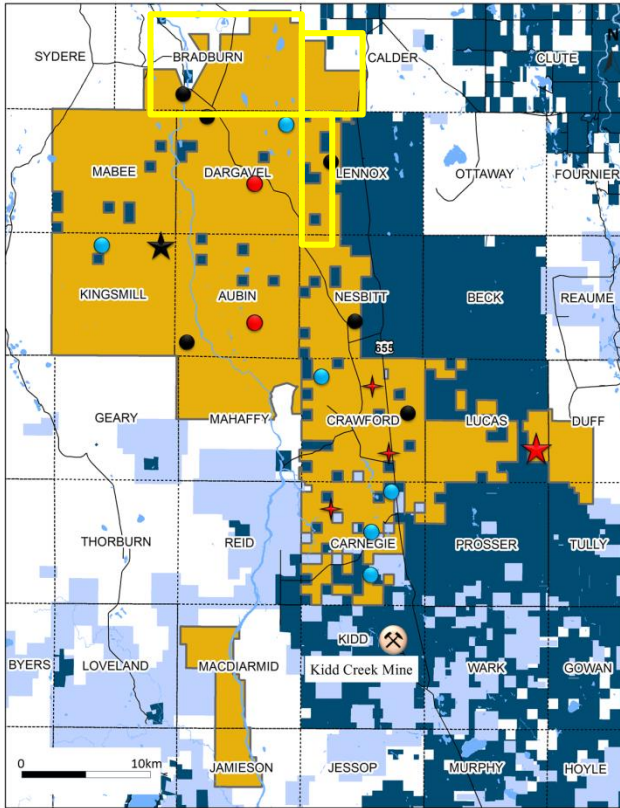
### Trends & Drill Ready Targets

- T-10 : 1.4 km Bedrock Conductor in in Ultramafic Rocks (Ni-Cu-PGE)**
- T-38 : 400 m trend in Mafic/Felsic Volcanic Rocks (Cu-Pb-Zn)**
- T-37 : 1.7 km m trend in Metasediments incl. 0.24% Cu / 13.4' in DDH 25020 (VMS)**
- T-85 : 1.6 km trend in Metasediments incl. 0.098 oz/t (3.14 g/t) Au over 4.7' in DDH 25013 (Au)**
- T-25 : 400 m trend in Ultramafic Rocks (Ni-Cu-PGE)**
- T-36 : 700 m trend in Ultramafic Rocks (VMS)**
- T-48 : 700 m trend in Metasediments (Au)**
- T-40 : 1,200 m trend in Felsic Volcanic Rocks (Au)**
- T-34 : 900 m trend in Felsic Volcanic Rocks (Au)**



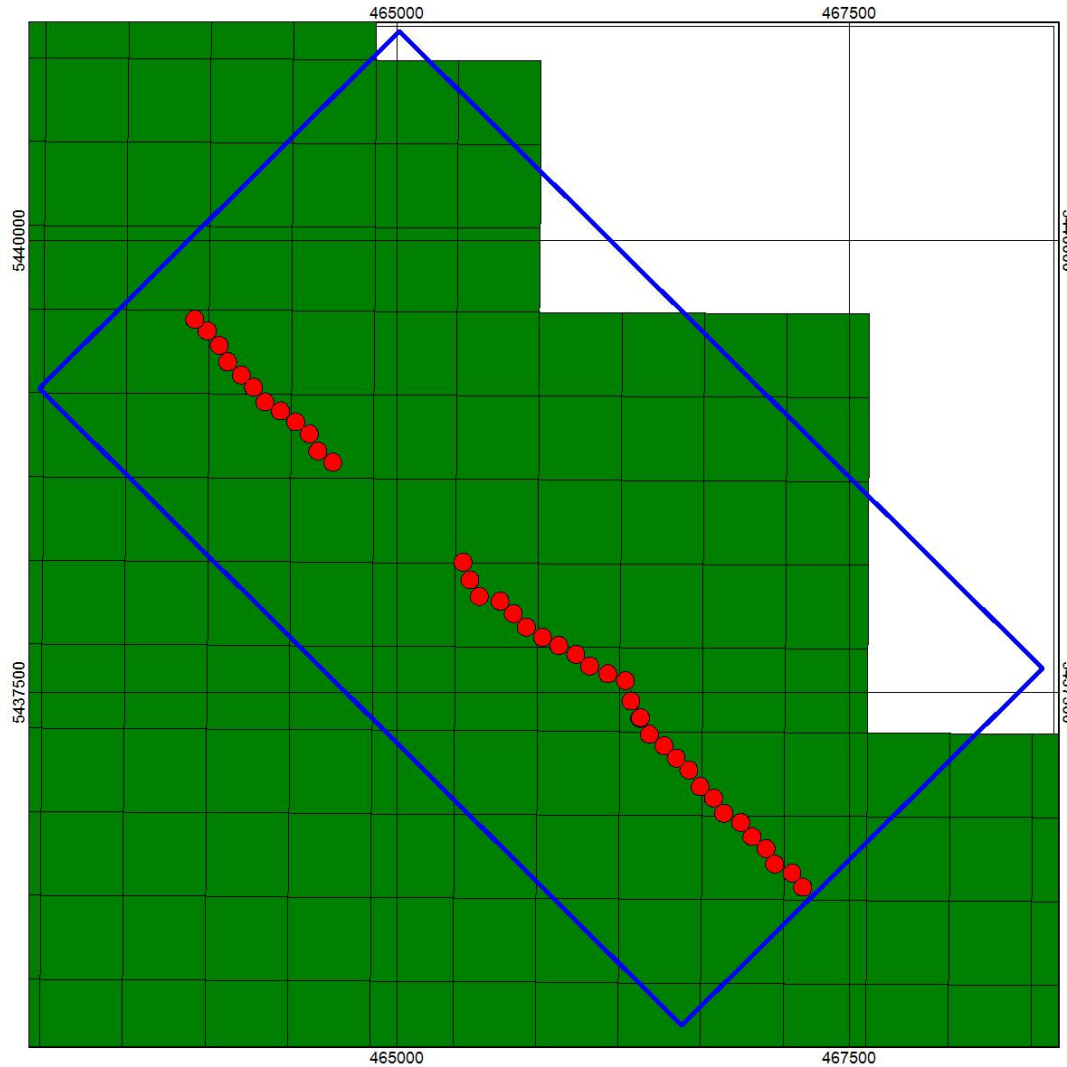
# CALDER TOWNSHIP PROPERTY (EM Response and AirTem conductor picks)

TSX.V:NOB  
FWB:NB7  
OTC.PK:NLPXF



AirTEM  
conductor pick

# PROJECT 81 CALDER TOWNSHIP Conductor Trend 2.6km in Length



- Noble Staked  
Mineral Claim

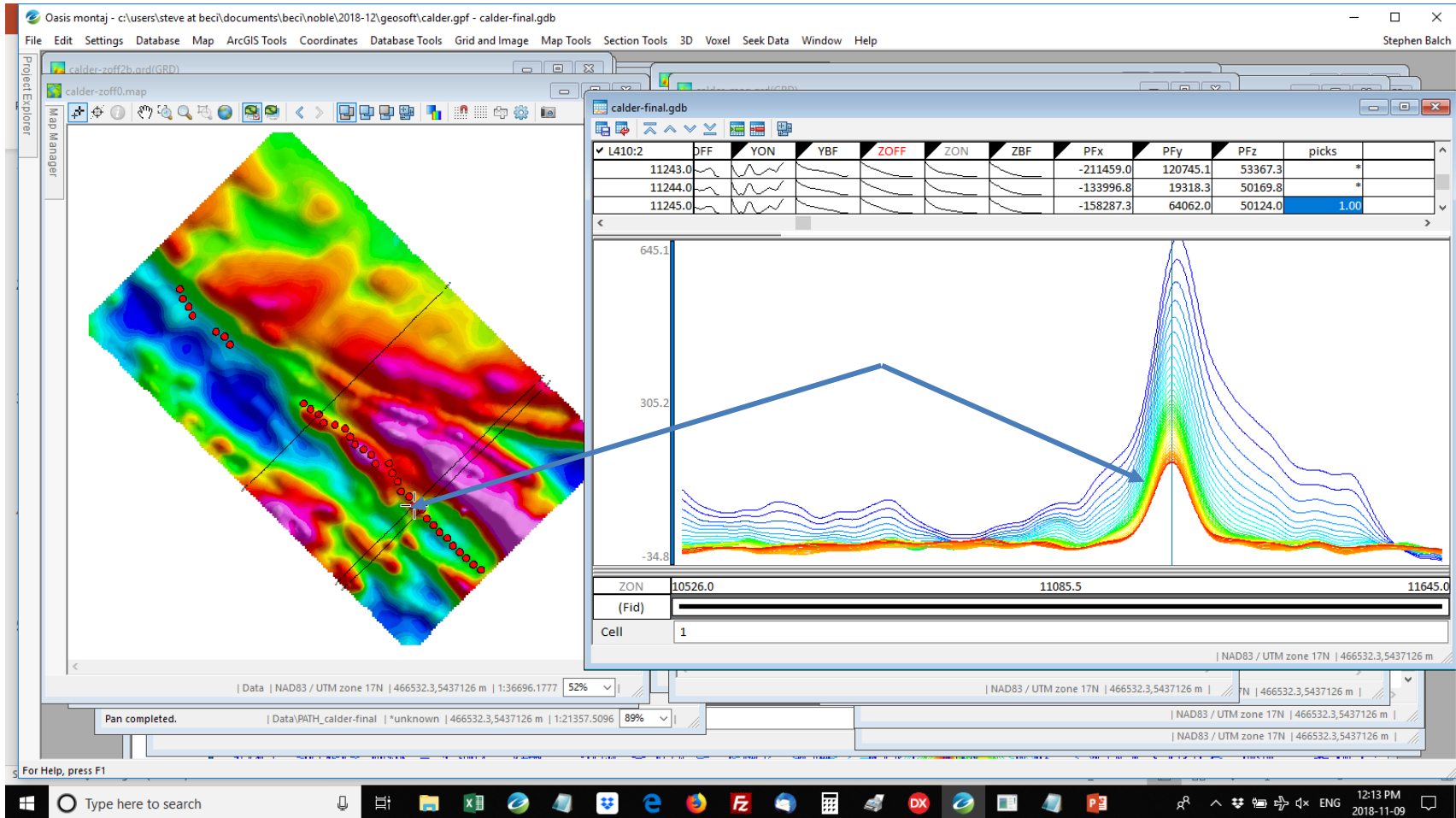


- AirTEM Conductor Pick



- AirTEM Survey Outline

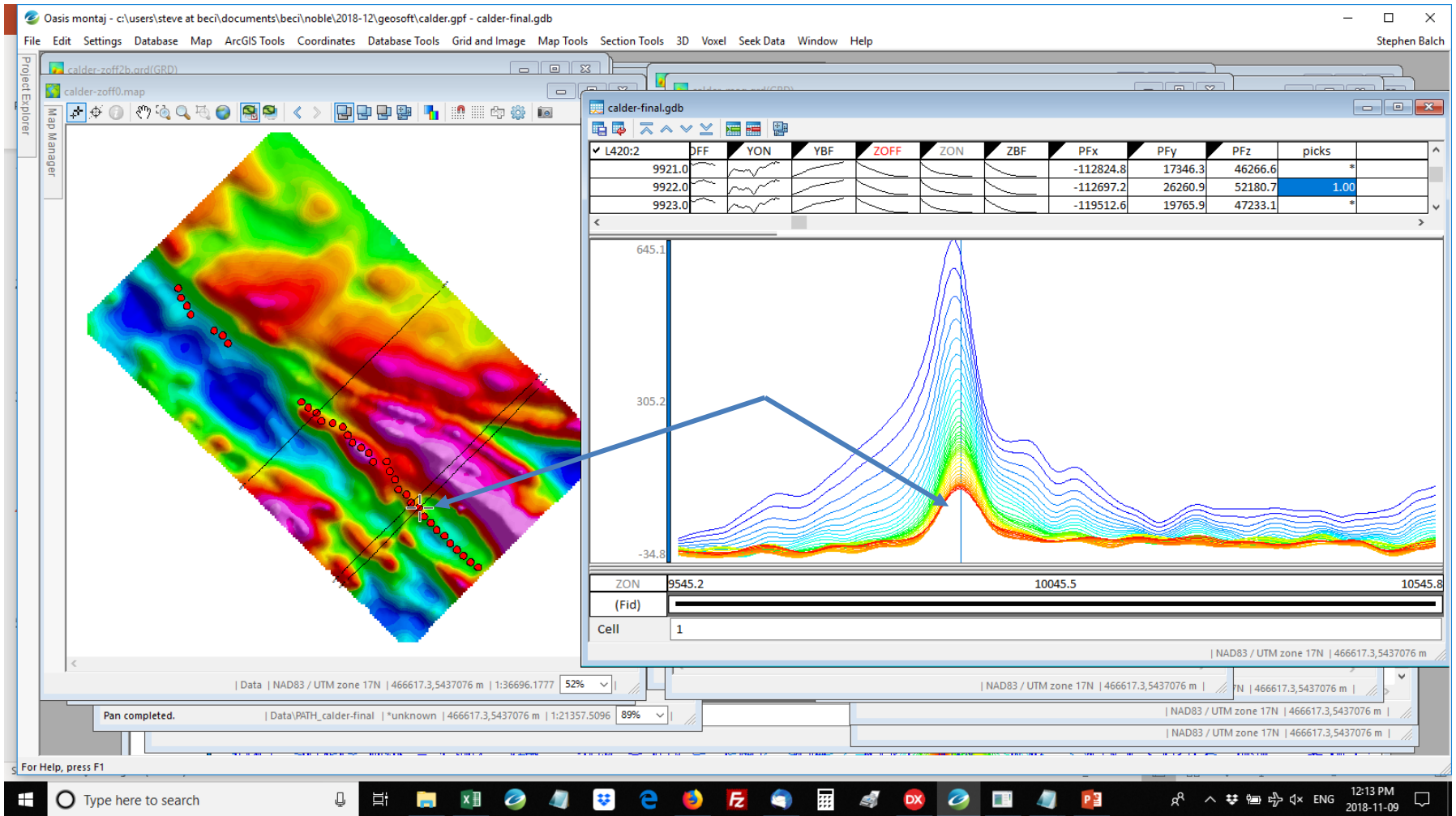
# PROJECT 81 CALDER TOWNSHIP Best Conductor on L-410 Conductor Trend 2.6km in Length



# PROJECT 81 CALDER TOWNSHIP

## 2<sup>nd</sup> Best Conductor on L-420 Conductor Trend 2.6km in Length

TSX.V:NOB  
FWB:NB7  
OTC.PK:NLPXF



# CALDER, LENNOX & BRADBURN TOWNSHIPS

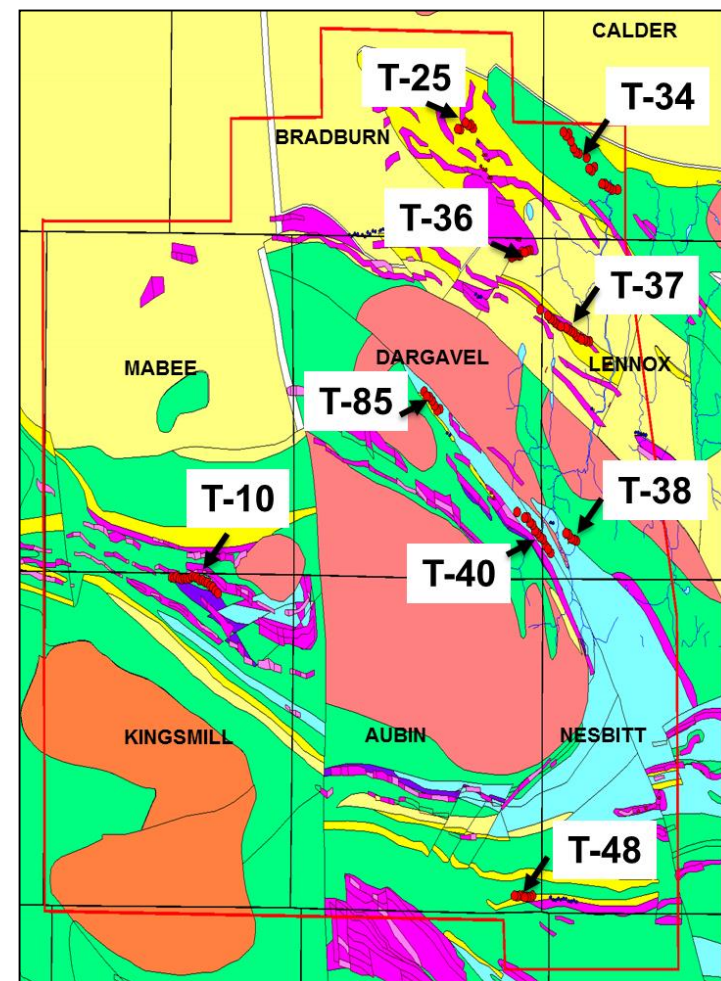
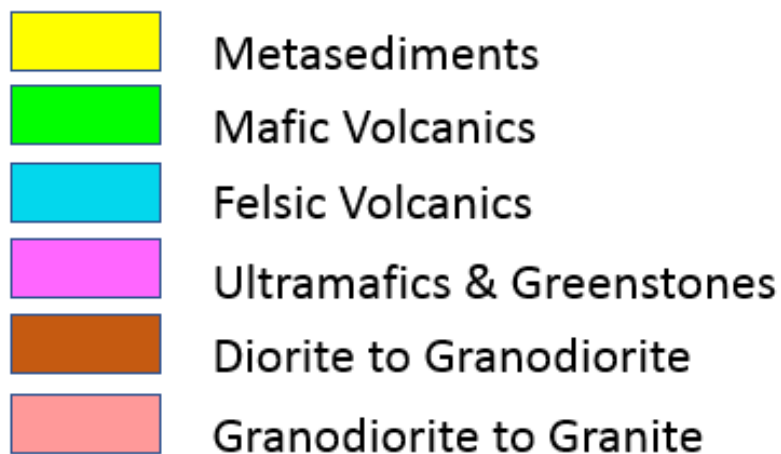
## Trends & Targets

**T-38 : 400 m trend in Mafic/Felsic Volcanic Rocks (Cu-Pb-Zn)**

**T-37 : 1.7 km m trend in Metasediments incl. 0.24% Cu / 13.4' in DDH 25020 (VMS)**

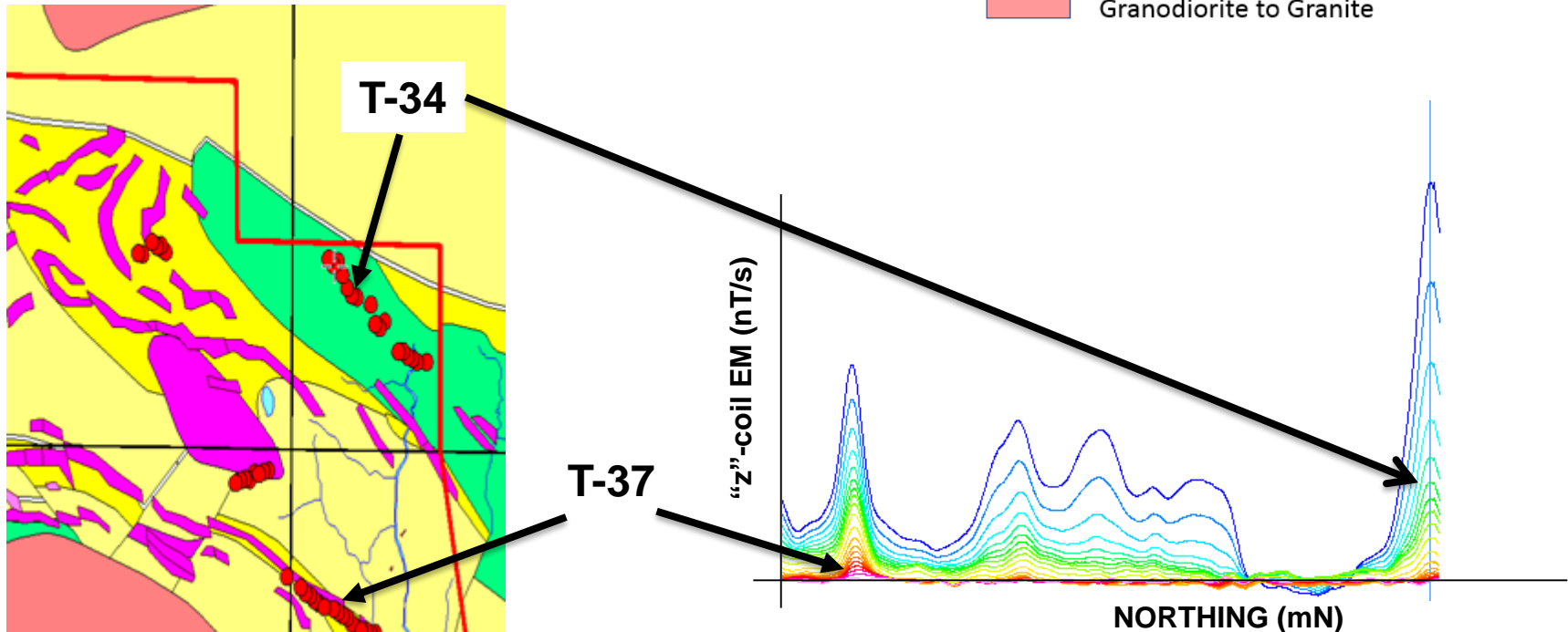
**T-34 : 900 m trend in Felsic Volcanic Rocks (Au)**

**T-25 : 400m Ultramafic Trend (Ni-Co-Cu-PGE)**



### TREND 34

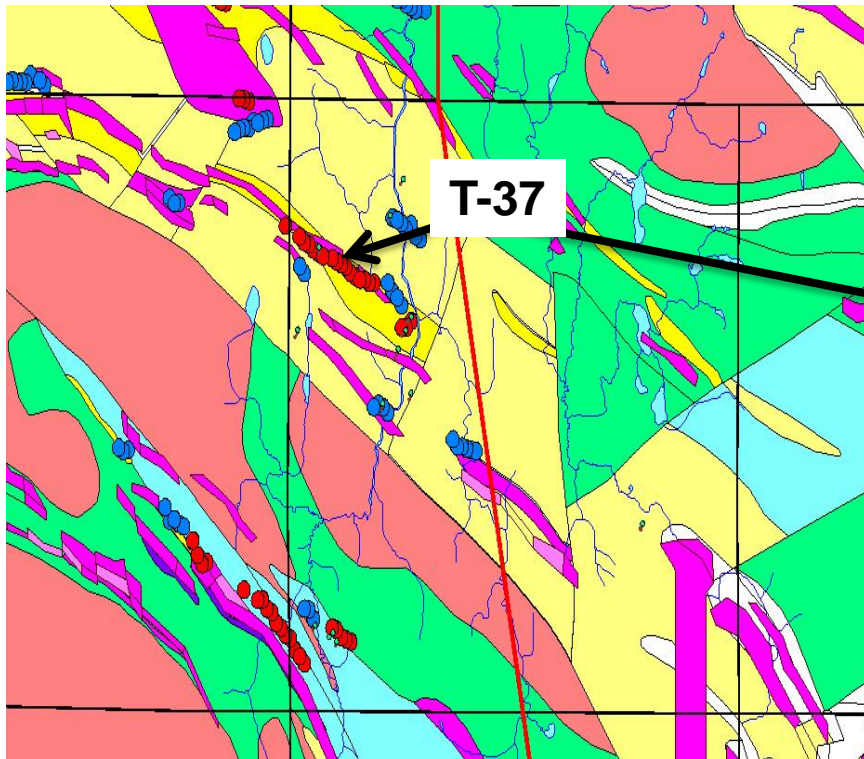
- 900 m strike length
- Bedrock conductor in volcanics
- **Copper-Silver-Gold Target**



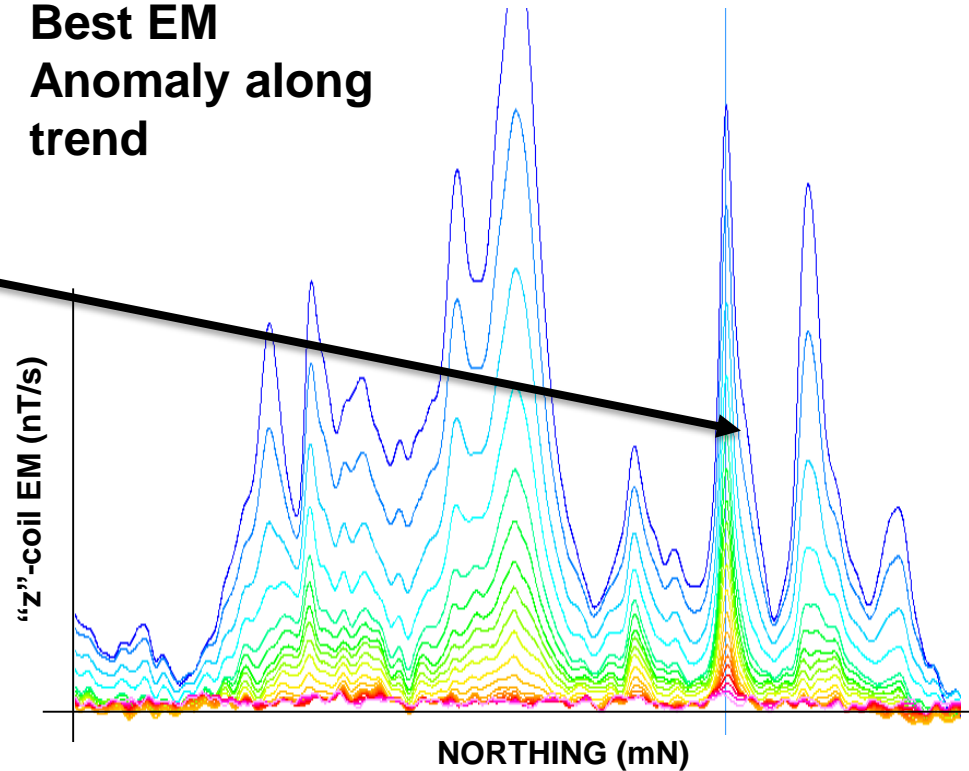
# PROJECT 81 LENNOX TOWNSHIP Geophysical Trend, Profile & Target

## TREND 37

- 1,700 m trend incl. 0.24% Cu over 13.4'
- Inco drill hole 25020 from 1960s
- **VMS Target**



**Best EM  
Anomaly along  
trend**



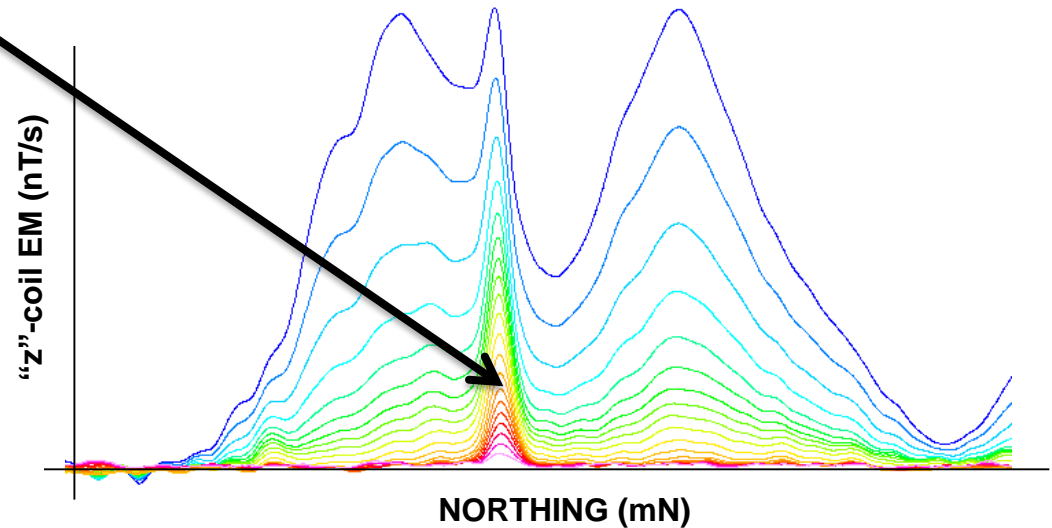
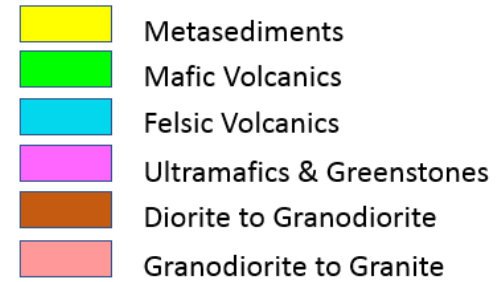
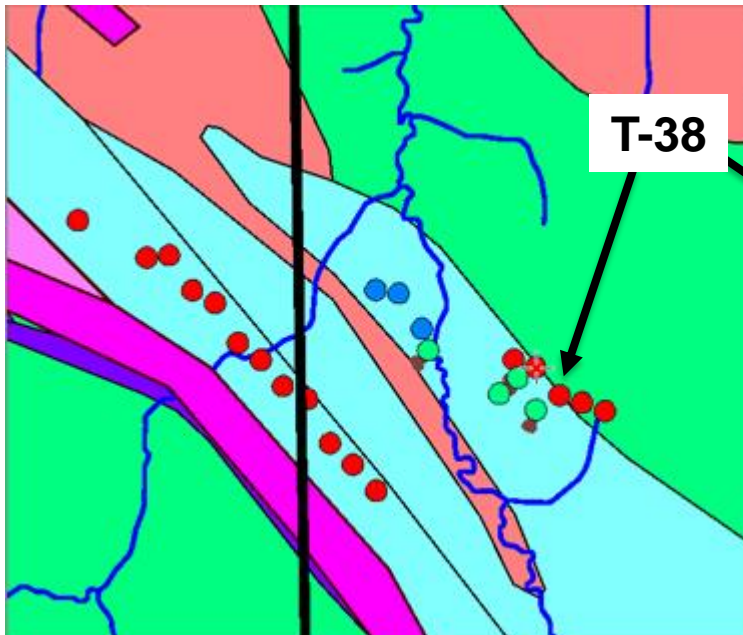


# PROJECT 81 LENNOX TOWNSHIP

## Geophysical Trend, Profile & Target

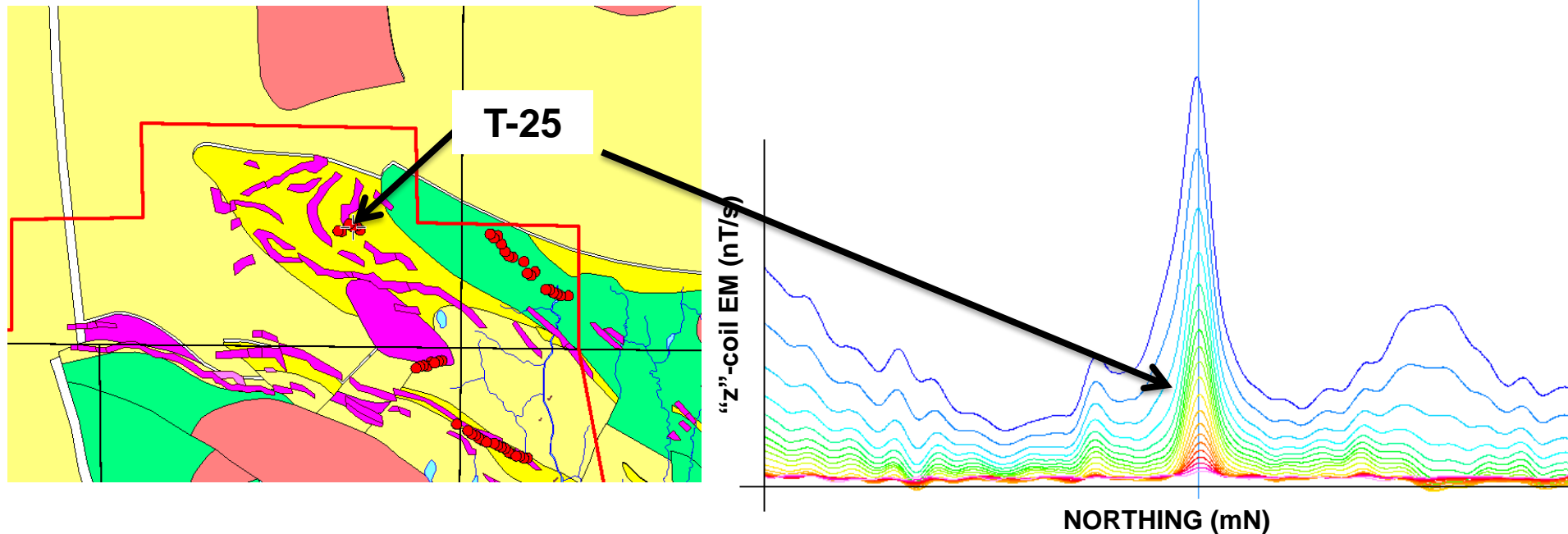
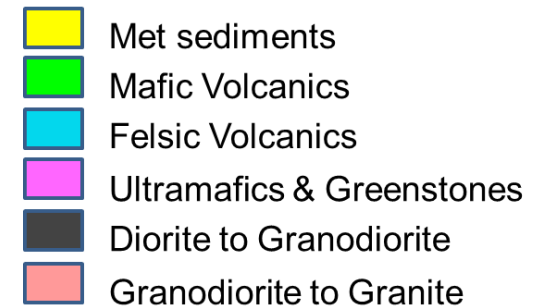
### TREND 38

- 400 m trend in volcanics (Cu-Pb-Zn)
- **VMS Target**



### TREND 25

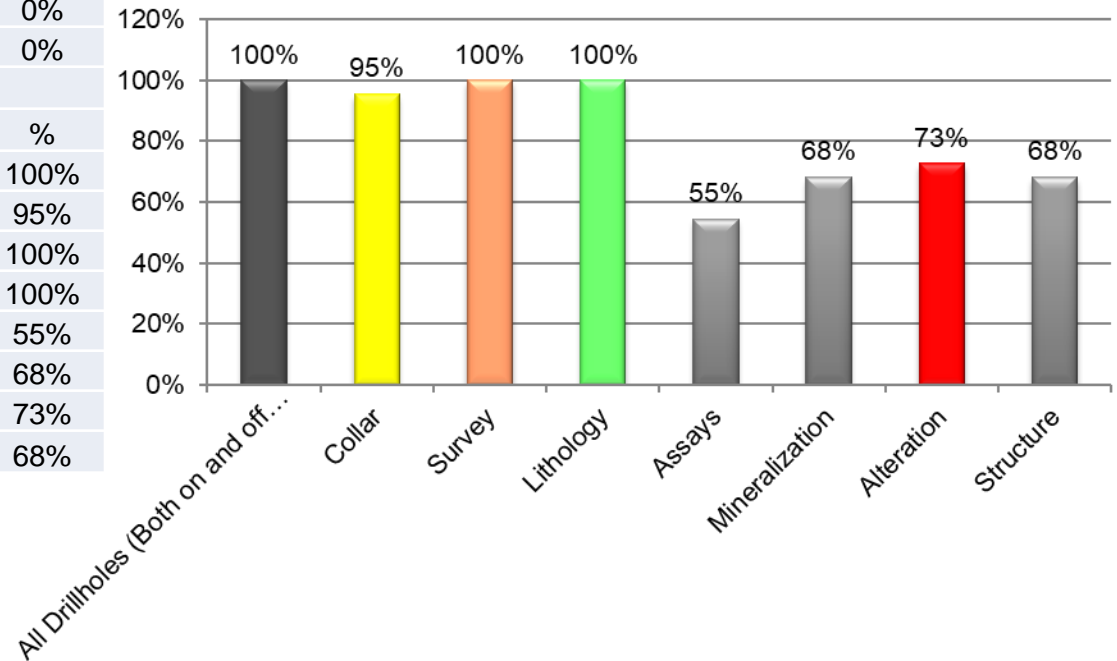
- 400 m strike length in Ultra Mafics
- EM response –symmetric & well developed
- Located within greenstone belt
- **Nickel-Copper-PGE Target**



# LENNOX TOWNSHIP COMPILATION DATABASE

DATABASE SUMMARY	#	%
Total Drillholes (Both on and off Property)	22	100%
Diamond Drilling	22	100%
RC Drilling	0	0%
Unknown Drilling Type	0	0%
<b>CONTAINED DATA</b>	<b>#</b>	<b>%</b>
All Drillholes (Both on and off Property)	22	100%
Collar	21	95%
Survey	22	100%
Lithology	22	100%
Assays	12	55%
Mineralization	15	68%
Alteration	16	73%
Structure	15	68%

## Lennox Current Database for On and Off Property Drillholes

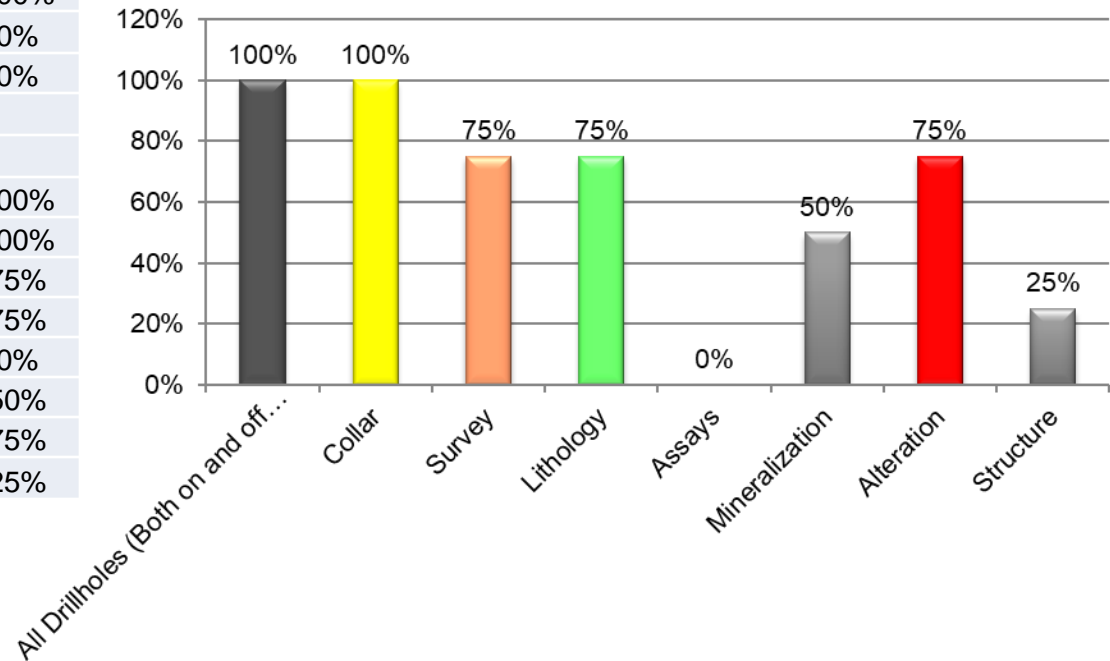


# BRADBURN TOWNSHIP COMPILATION DATABASE

DATABASE SUMMARY		
Total Drillholes (Both on and off Property)	4	100%
Diamond Drilling	4	100%
RC Drilling	0	0%
Unknown Drilling Type	0	0%

CONTAINED DATA		
All Drillholes (Both on and off Property)	4	100%
Collar	4	100%
Survey	3	75%
Lithology	3	75%
Assays	0	0%
Mineralization	2	50%
Alteration	3	75%
Structure	1	25%

## Bradburn Current Database for On and Off Property Drillholes



# CONTACT INFORMATION

**2500 – 120 Adelaide St. W  
Toronto, Ontario  
Canada M5H 1T1**

**Phone: 416-214-2250  
Fax: 416-367-1954**

**info@noblemineralexploration.com  
ir@noblemineralexploration.com  
www.noblemineralexploration.com**

**H. Vance White, President & Chief Executive Officer  
Randy Singh PGeo(ON), PEng(ON), VP Exploration & Project Development  
Corinna de Beer, Corporate Communications**



December 2018



**NOBLE  
MINERAL**  
EXPLORATION INC.

# PROJECT 81

## Calder, Lennox & Bradburn Townships

### Drill Ready

# Geophysical Targets & Trends

TSX.V:NOB  
FWB:NB7  
OTC.PK:NLPXF